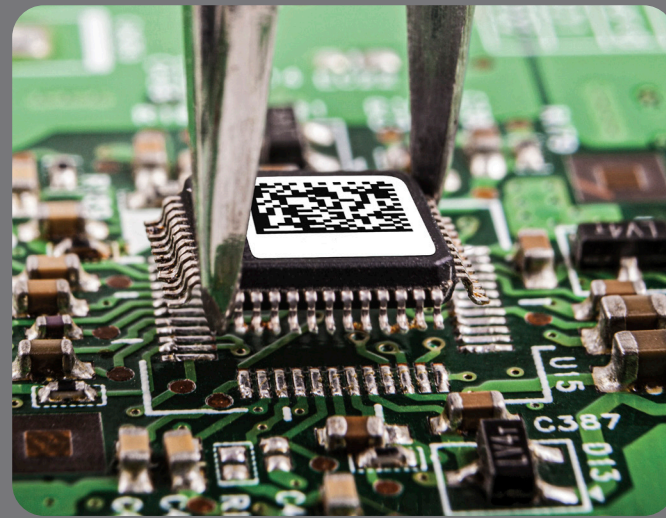


Solutions For Track and Trace Identification



Labels for Life.

LABELING EXPERTISE FOR EXTREME APPLICATIONS



IDENTCO® has been providing innovative, industry-leading identification solutions for 35 years. We focus on solving the most demanding labeling and masking problems for customers in the electronics, automotive, aerospace, medical device, life sciences, and other challenging environments.

SURFACE CHEMISTRY AND ADHESIVE EXPERTISE. PRECISION DIE CUTTING LEADERSHIP. GLOBAL SERVICE.

Our teams in the US, Mexico, Europe, and Asia provide global and local customers alike consistent service and product excellence. Technicians in our fully-equipped R&D lab partner closely with the leading innovators of the raw materials we require to develop products that outperform. Close cooperation with electronics cleaning chemistries companies KYZEN, ZESTRON, and kolb ensure that labels from IDENTCO are out in front of the performance curve.



STOCK OR CUSTOM. PRINT-ON-DEMAND OR PREPRINTED. HAND OR AUTO APPLY.

Our goal is to provide you with the choices that fit your process and optimize your workflow. Our range of stock labels and solder masks constantly evolve, but we sincerely welcome your requests for custom sizes and shapes. We excel in providing you with the exact label your unique application requires. Along with best-in-class printers, performance-matched ribbons, and the industry's most robust SMT label feeders, a complete identification system from IDENTCO provides the reliability and performance required to keep your lines up and running.

TABLE OF CONTENTS

Quick References

New in this catalog	4	4
Guide to label materials.....	5	
Label size selection guide	6	

PC Board and Electronic Component Labels

TTL®100 Series labels	9	8
Ribbons for TTL100 Series labels.....	20	
Thermal transfer printers.....	22	

SMT Pick and Place Labeling Solutions

PPL™ Series auto-apply labels.....	24	23
Label feeders for SMT pick and place machines	26	
Printer, ribbons, rewinder, printer applicator.....	28	
Print Service Centers.....	30	
Polyimide solder masks	31	

Large Format Labels for UL/CSA Rating Plates

32

Wire and Cable Identification Solutions

Self-laminating wire and cable markers	37	36
Heat shrink sleeve wire markers	40	
Printers for wire and cable labels and sleeves	42	

Packaging/Shipping Labels and Label Dispensers

43

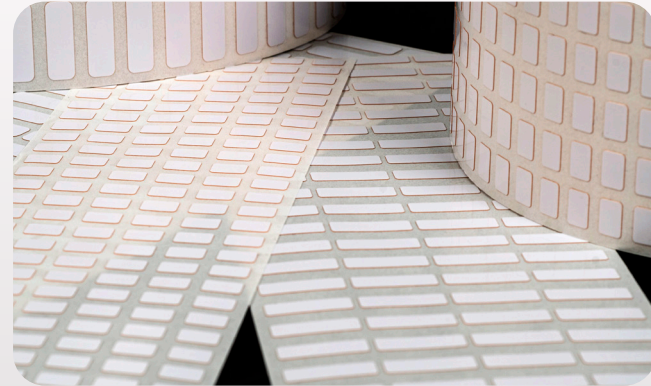
Part Number Index

44

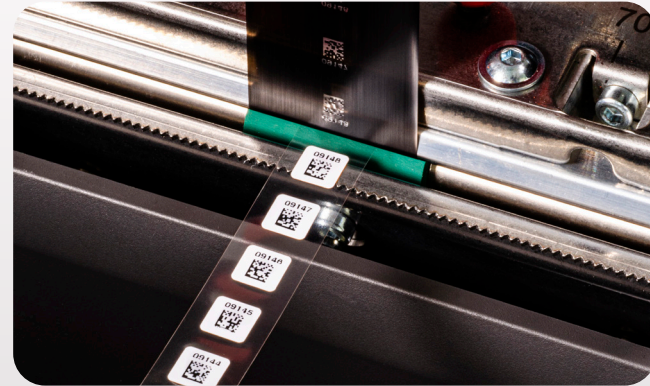
NEW IN THIS CATALOG



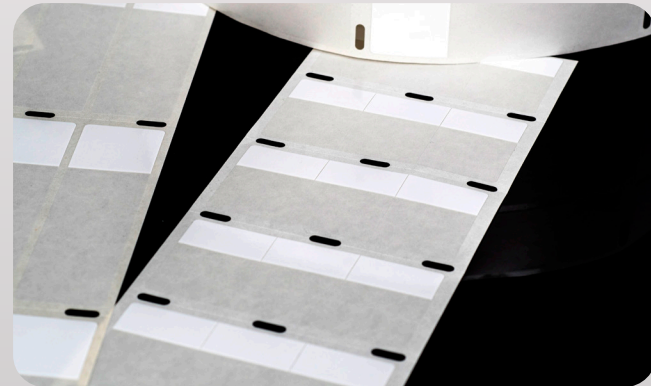
Five new sizes of small-format TTL®100 Series labels for circuit boards and electronic components. (See pp. 9-19)



Introducing the PPL™ Series pick-and-place labels for surface mount and other auto-apply applications. (See pp. 23-31)



The redesigned TTL®200 Series wire identification range has expanded from 11 sizes and configurations to 42. (See pp. 37-39)



Eight new sizes of large-format TTL®300 Series labels for printing your own UL/CSA rating plates and nameplates. (See pp. 32-35)



Improved engineering and design highlight IDENTCO's new range of SMT feeders for labels and solder masks. Featuring the ILP™-30, the slimmest SMT label feeder in the industry. (See page 26).



Introducing the new ELP™-M industrial benchtop thermal transfer printer. The ELP-M delivers 600 dpi resolution, ease of use, and durable construction at an attractive price point. (See page 22)



Our label dispenser line has been upgraded with the release of the ELD™-200 Series electronic label dispensers. Choose from two feature-rich models. (See page 43)



MATERIAL SELECTION GUIDE

TT400 Series Polyimides

Designed for thermal transfer printing of variable information for use in surface-mount and topside and bottom-side printed circuit board labeling applications. High resistance to fluxes, solders, cleaning chemistries and high temperatures. PT205HD is an uncoated, unprintable polyimide film for use in precision die-cut solder masks, particularly for auto-apply SMT applications.

Material	Color	Finish	Temperature Range	Description	Ribbons	UL	CSA	CUL
TT403	White	Gloss	F: -40° to 572° C: -40° to 300°	High performance 2 mil high temperature-resistant polyimide film with 2 mil permanent acrylic adhesive and gloss white thermal transfer topcoat.	TTRR-D* TTRR-CR TTRR-B	●		
TT411	Tan	Matte	F: -40° to 572° C: -40° to 300°	High performance 2.7 mil polyimide film with 2 mil permanent acrylic adhesive and matte tan thermal transfer topcoat. Tan (amber) color is a requirement in some military applications.	Must use TTRR-AK	●		
TT416	White	Gloss	F: -40° to 572° C: -40° to 300°	Standard performance 2 mil high temperature-resistant polyimide film with 1.5 mil permanent acrylic adhesive and gloss white thermal transfer topcoat.	TTRR-D* TTRR-B TTRR-CR	●		
TT433	White	Gloss	F: -40° to 572° C: -40° to 300°	Ultra performance 2 mil high temperature-resistant polyimide film with 2 mil permanent acrylic adhesive and gloss white thermal transfer topcoat.	TTRR-CR* TTRR-B TTRR-D	●		
TT451	White	Gloss	F: -40° to 572° C: -40° to 300°	Electrostatic dissipative (ESD) 2 mil high temperature-resistant polyimide film with 2 mil permanent acrylic adhesive and gloss white thermal transfer topcoat.	TTRR-D* TTRR-B TTRR-CR	●		
TT481	White	Gloss	F: -40° to 572° C: -40° to 300°	Low-profile 1 mil polyimide film with 1 mil high-performance permanent acrylic adhesive and gloss white thermal transfer topcoat.	TTRR-B* TTRR-D	●		
PT205HD	Amber	Gloss	F: -40° to 500° C: -40° to 260°	High-performance 5 mil uncoated amber polyimide film with 1.5 mil removable silicone adhesive for use in die-cut solder masks. Removes cleanly after use, leaving no adhesive residue.	Not printable			

* Best performance for most applications

TT700 Series Polyesters

Designed for labeling of topside through-hole and post-process circuit boards, electronic components, and marking various industrial parts. Choose silver polyester for a "metal nameplate" look for rating plates and nameplates.

Material	Color	Finish	Temperature Range	Description	Ribbons	UL	CSA	CUL
TT700	White	Gloss	F: -40° to 302° C: -40° to 150°	2 mil polyester film with 1 mil high-performance acrylic permanent adhesive and gloss white thermal transfer topcoat.	TTRR-B* TTRR-D	●	●	●
TT730	Silver	Gloss	F: -40° to 302° C: -40° to 150°	2 mil polyester film with 1 mil high-performance acrylic adhesive and gloss platinum silver thermal transfer topcoat.	TTRR-B* TTRR-D	●	●	
TT741	Silver	Matte	F: -40° to 302° C: -40° to 150°	2 mil polyester film with 1 mil high-performance acrylic adhesive and matte silver thermal transfer topcoat.	TTRR-B* TTRR-D	●	●	●
TT748	White	Matte	F: -40° to 302° C: -40° to 150°	2 mil polyester film with 1 mil high-performance acrylic adhesive and matte white thermal transfer topcoat.	TTRR-D* TTRR-B TTRR-CR	●	●	●
TT760	White	Gloss	F: -40° to 302° C: -40° to 150°	2 mil polyester film with 2 mil high-performance permanent acrylic adhesive and gloss white thermal transfer topcoat. Extra thick adhesive offers improved performance on textured and low surface energy surfaces.	TTRR-D* TTRR-B TTRR-CR	●	●	●

* Best performance for most applications

TT300 Series Vinyl

Highly conformable film perfectly suited for the identification of wire and cable.

Material	Color	Finish	Temperature Range	Description	Ribbons	UL	CSA	CUL
TT327	Clear	Gloss	F: -20° to 140° C: -29° to 60°	3.5 mil clear vinyl film with 1 mil high-performance acrylic adhesive. Combination of high-opacity white thermal transfer topcoat, clear tail, and high-conformability provide physical self-laminating protection for the printed legend.	TTRR-A	●		

TT600 Series Polypropylenes

Excellent lower-cost alternative to polyesters in certain applications that do not require the high temperature resistance polyesters offer. Applications include rating plates, parts marking, electronic component marking, and general industrial barcoding.

Material	Color	Finish	Temperature Range	Description	Ribbons	UL	CSA	CUL
TT600	White	Gloss	F: -40° to 176° C: -40° to 80°	2 mil polypropylene film with 1 mil high-performance emulsion acrylic adhesive and gloss white thermal transfer topcoat.	TTRR-B* TTRR-D	●		●
TT602	White	Matte	F: -40° to 176° C: -40° to 80°	3 mil polypropylene film with 1 mil high-performance emulsion acrylic adhesive and matte white thermal transfer topcoat.	TTRR-A* TTRR-V	●		●

* Best performance for most applications

LABEL SIZE SELECTION GUIDE

Actual size label	Width x Height in. (mm) Available parts in this size; Page #
	0.118 x 0.118 (3.0 x 3.0) • PPL103-xxx-10; 1-across; Page 24
	0.157 x 0.157 (4.0 x 4.0) • PPL104-xxx-10; 1-across; Page 24
	0.170 x 0.130 (4.32 x 3.30) • TTL140-xxx-10; 5-across; Page 16
	0.197 x 0.197 (5.0 x 5.0) • PPL105-xxx-10; 1-across; Page 24
	0.250 x 0.250 (6.35 x 6.35) • TTL124-xxx-10; 8-across; Page 13 • TTL148-xxx-10; 7-across; Page 18 • PPL106-xxx-10; 1-across; Page 24
	0.270 x 0.270 (6.86 x 6.86) • TTL113-xxx-10; 5-across; Page 11
	0.275 x 0.275 (7.0 x 7.0) • PPL107-xxx-10; 1-across; Page 24
	0.300 x 0.200 (7.62 x 5.08) • TTL139-xxx-10; 6-across; Page 16
	0.3125 x 0.3125 (7.93 x 7.93) • TTL111-xxx-10; 5-across; Page 11
	0.315 x 0.315 (8.00 x 8.00) • TTL146-xxx-10; 8-across; Page 17 • PPL108-xxx-10; 1-across; Page 24
	0.375 x 0.375 (9.53 x 9.53) • TTL116-xxx-10; 7-across; Page 12 • TTL125-xxx-10; 4-across; Page 13 • PPL109-xxx-10; 1-across; Page 25
	0.449 x 0.157 (11.405 x 3.98) • TTL145-xxx-25; 6-across; Page 17
	0.500 x 0.200 (12.70 x 5.08) • TTL121-xxx-10; 5-across; Page 13 • TTL126-xxx-10; 4-across; Page 14 • TTL157-xxx-10; 1-across; Page 19
	0.500 x 0.250 (12.70 x 6.35) • TTL101-xxx-10; 5-across; Page 9
	0.500 x 0.4375 (12.70 x 11.125) • TTL112-xxx-10; 5-across; Page 11 • TTL127-xxx-10; 3-across; Page 14
	0.600 x 0.250 (15.24 x 6.35) • TTL137-xxx-10; 1-across; Page 16 • PPL111-xxx-10; 1-across; Page 25
	0.650 x 0.200 (4.32 x 3.30) • TTL102-xxx-10; 4-across; Page 9 • TTL128-xxx-10; 2-across; Page 14 • TTL136-xxx-10; 1-across; Page 16 • PPL110-xxx-10; 1-across; Page 25

Actual size label	Width x Height in. (mm) Available parts in this size
	0.700 x 0.375 (17.78 x 9.53) • TTL122-xxx-10; 4-across; Page 13 • TTL151-xxx-10; 1-across; Page 18
	0.750 x 0.250 (19.05 x 6.35) • TTL103-xxx-10; 4-across; Page 9 • TTL129-xxx-10; 1-across; Page 14 • TTL141-xxx-10; 4-across; Page 17 • PPL112-xxx-10; 1-across; Page 25
	0.750 x 0.750 (19.05 x 19.05) • TTL123-xxx-10; 4-across; Page 13
	0.900 x 0.250 (22.86 x 6.35) • TTL104-xxx-10; 3-across; Page 9 • TTL130-xxx-10; 1-across; Page 14 • PPL113-xxx-10; 1-across; Page 25
	1.000 x 0.187 (25.40 x 4.75) • TTL152-xxx-10; 3-across; Page 18 • TTL156-xxx-10; 1-across; Page 19
	1.000 x 0.250 (25.40 x 6.35) • TTL135-xxx-10; 1-across; Page 15 • PPL114-xxx-10; 1-across; Page 25
	1.000 x 0.375 (25.40 x 9.53) • TTL105-xxx-10; 3-across; Page 10 • TTL131-xxx-10; 1-across; Page 15
	1.000 x 0.500 (25.40 x 12.70) • TTL106-xxx-10; 3-across; Page 10 • TTL147-xxx-10; 1-across; Page 17
	1.000 x 1.000 (25.40 x 25.40) • TTL144-xxx-10; 3-across; Page 17
	1.100 x 0.380 (27.94 x 9.53) TTL138-xxx-10; 2-across; Page 16
	1.250 x 0.250 (31.75 x 6.35) • TTL118-xxx-10; 2-across; Page 12 • TTL134-xxx-10; 1-across; Page 15
	1.250 x 0.375 (31.75 x 9.53) • TTL149-xxx-10; 2-across; Page 18

LABEL SIZE SELECTION GUIDE

Actual size label	Width x Height in. (mm) Available parts in this size; Page #
	1.250 x 1.000 (31.75 x 25.40) • TTL300-xxx-12; 2-across; Page 32
	1.375 x 0.250 (34.93 x 6.35) • TTL158-xxx-10; 1-across; Page 19
	1.500 x 0.125 (38.10 x 3.18) • TTL115-xxx-10; 2-across; Page 11 • TTL133-xxx-10; 1-across; Page 15
	1.500 x 0.250 (38.10 x 6.35) • TTL114-xxx-10; 2-across; Page 11 • TTL132-xxx-10; 1-across; Page 15
	1.500 x 0.500 (38.10 x 12.70) • TTL119-xxx-10; 2-across; Page 12
	1.500 x 0.750 (38.10 x 19.10) • TTL308-xxx-10; 2-across; Page 34
	1.500 x 1.000 (38.10 x 25.40) • TTL301-xxx-6; 1-across; Page 32
	1.750 x 0.250 (44.45 x 6.35) • TTL107-xxx-10; 1-across; Page 10
	2.000 x 0.250 (50.80 x 6.35) • TTL117-xxx-10; 1-across; Page 12
	2.000 x 0.375 (50.80 x 9.53) • TTL109-xxx-10; 1-across; Page 10
	2.000 x 0.400 (50.80 x 10.16) • TTL159-xxx-10; 1-across; Page 19
	2.000 x 0.500 (50.80 x 12.70) • TTL120-xxx-10; 1-across; Page 12
	2.000 x 1.000 (50.80 x 25.40) • TTL302-xxx-6; 1-across; Page 32



Larger labels are listed below
Note: All labels below are one-across

Width x Height in. (mm)	Part Number	Pg#
2.000 x 1.250 (50.80 x 31.75)	TTL311-xxx-2.5	34
2.750 x 1.000 (69.85 x 25.40)	TTL310-xxx-5	34
2.750 x 1.250 (69.85 x 31.75)	TTL305-xxx-3	33
2.750 x 1.375 (69.85 x 34.93)	TTL304-xxx-4	33
2.750 x 1.750 (69.85 x 44.45)	TTL317-xxx-1	35
3.000 x 0.250 (76.20 x 6.35)	TTL153-xxx-2.5	18
3.000 x 0.3125 (76.20 x 7.94)	TTL110-xxx-10	10
3.000 x 1.000 (76.20 x 25.40)	TTL309-xxx-5	34
3.000 x 1.500 (76.20 x 38.10)	TTL312-xxx-2.5	34
3.000 x 2.000 (76.20 x 50.80)	TTL307-xxx-3	33
3.000 x 3.000 (76.20 x 76.20)	TTL306-xxx-1	33
4.000 x 1.000 (101.6 x 25.40)	TTL303-xxx-3	33
4.000 x 2.000 (101.6 x 50.80)	TTL313-xxx-1	35
4.000 x 3.000 (101.60 x 76.20)	TTL314-xxx-1	35
4.000 x 4.000 (101.60 x 101.60)	TTL315-xxx-1	35
4.000 x 6.000 (101.60 x 152.40)	TTL316-xxx-1	35

Need a custom size?

IDENTCO® excels at quick turnaround on custom blank thermal transfer printable labels.

[Scan here for a quick quote.](#)



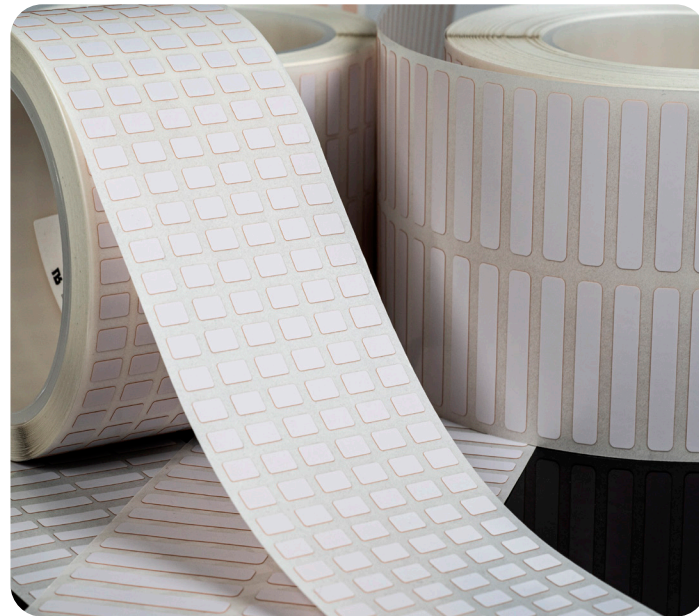
PC BOARD AND ELECTRONIC COMPONENT LABELS



Full traceability for printed circuit assemblies. Track and trace printed circuit boards and high-value electronic components through the entire assembly workflow with print-on-demand labels from IDENTCO®. Engineered for use in surface mount and through-hole assembly, TTL®100 Series thermal transfer printable labels endure harsh fluxes, the latest cleaning chemistries, and high temperatures encountered in today's circuit board assembly processes on both sides of the board.

Off-the-shelf or customized to your specifications. TTL100 Series labels are available in 53 sizes for your convenience, in high-performance polyimide and polyester. If your application requires a custom size for an exact fit, we welcome your request. **Custom sizes and shapes are a core competency at IDENTCO.**

Surface chemistry expertise matters. Printable topcoats on IDENTCO materials are formulated for the unique challenges of specific applications and environments. Our topcoats are then tested with our range of ribbon formulations, resulting in optimal label/ribbon combinations. Printed information, including high resolution 2D codes, emerge unaffected and perfectly legible when printed with performance-matched IDENTCO TTRR™ Series resin ribbons. Label/ribbon combinations recommended by IDENTCO have been thoroughly tested by KYZEN, ZESTRON, and kolb for optimal performance.



“DID YOU KNOW?”

UL/CSA recognitions are contingent upon printing with the appropriate IDENTCO material and TTRR ribbon combination specified by Underwriters Laboratories and the Canadian Standards Association.

For complete engineered drawings visit:

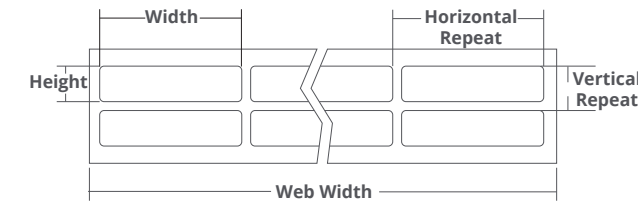


identco.com/resources/engineered-drawings-for-stock-parts/#

STOCK TTL®100 SERIES LABELS

Choose from 53 stock sizes in seven high-performance materials developed specifically for use in printed circuit board manufacturing. Ribbons listed provide best performance in most applications. IDENTCO® recommends testing the label/ribbon combination in your application under typical operating conditions.

Refer to page 20 for a complete list of our most popular high-performance ribbons.

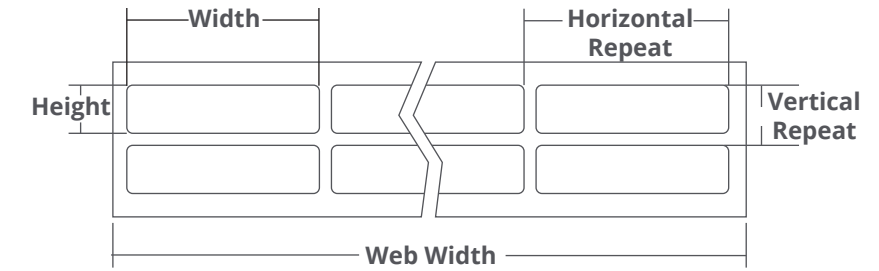
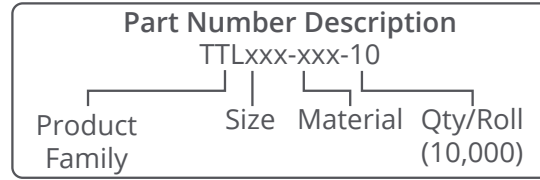


TTL101	in. (mm)	Part Number	Material	Ribbon
Width:	0.500 (12.70)	TTL101-403-10	Gloss white polyimide	TTRR-D3.27Z
Height:	0.250 (6.35)	TTL101-411-10	Matte tan polyimide	TTRR-AK3.15Z
Horiz. repeat:	0.600 (15.24)	TTL101-416-10	Economy gloss white polyimide	TTRR-D3.27Z
Vert. repeat:	0.500 (12.70)	TTL101-433-10	Hi-performance gloss white polyimide	TTRR-CR3.27Z
Web width:	3.000 (76.20)	TTL101-451-10	ESD gloss white polyimide	TTRR-D3.27Z
Labels per row:	5	TTL101-481-10	Low profile gloss white polyimide	TTRR-CR3.27Z
		TTL101-700-10	Gloss white polyester	TTRR-B3.27ZJ

TTL102	in. (mm)	Part Number	Material	Ribbon
Width:	0.650 (16.51)	TTL102-403-10	Gloss white polyimide	TTRR-D3.27Z
Height:	0.200 (5.08)	TTL102-411-10	Matte tan polyimide	TTRR-AK3.15Z
Horiz. repeat:	0.700 (17.78)	TTL102-416-10	Economy gloss white polyimide	TTRR-D33.27Z
Vert. repeat:	0.375 (9.53)	TTL102-433-10	Hi-performance gloss white polyimide	TTRR-CR3.27Z
Web width:	2.950 (74.93)	TTL102-451-10	ESD gloss white polyimide	TTRR-D3.27Z
Labels per row:	4	TTL102-481-10	Low profile gloss white polyimide	TTRR-CR3.27Z
		TTL102-700-10	Gloss white polyester	TTRR-B3.27ZJ

TTL103	in. (mm)	Part Number	Material	Ribbon
Width:	0.750 (19.05)	TTL103-403-10	Gloss white polyimide	TTRR-D3.54Z
Height:	0.250 (6.35)	TTL103-411-10	Matte tan polyimide	TTRR-AK3.54Z
Horiz. repeat:	0.800 (20.32)	TTL103-416-10	Economy gloss white polyimide	TTRR-D3.54Z
Vert. repeat:	0.375 (9.53)	TTL103-433-10	Hi-performance gloss white polyimide	TTRR-CR3.54Z
Web width:	3.350 (85.09)	TTL103-451-10	ESD gloss white polyimide	TTRR-D3.54Z
Labels per row:	4	TTL103-481-10	Low profile gloss white polyimide	TTRR-CR3.54Z
		TTL103-700-10	Gloss white polyester	TTRR-B3.54ZJ

TTL104	in. (mm)	Part Number	Material	Ribbon
Width:	0.900 (22.86)	TTL104-403-10	Gloss white polyimide	TTRR-D3.54Z
Height:	0.250 (6.35)	TTL104-411-10	Matte tan polyimide	TTRR-AK3.54Z
Horiz. repeat:	1.125 (28.58)	TTL104-416-10	Economy gloss white polyimide	TTRR-D3.54Z
Vert. repeat:	0.375 (9.53)	TTL104-433-10	Hi-performance gloss white polyimide	TTRR-CR3.54Z
Web width:	3.350 (85.09)	TTL104-451-10	ESD gloss white polyimide	TTRR-D3.54Z
Labels per row:	3	TTL104-481-10	Low profile gloss white polyimide	TTRR-CR3.54Z
		TTL104-700-10	Gloss white polyester	TTRR-B3.54ZJ



TTL105	in. (mm)	Part Number	Material	Ribbon
Width:	1.000 (25.40)	TTL105-403-10	Gloss white polyimide	TTRR-D3.54Z
Height:	0.375 (9.53)	TTL105-411-10	Matte tan polyimide	TTRR-AK3.54Z
Horiz. repeat:	1.075 (27.32)	TTL105-416-10	Economy gloss white polyimide	TTRR-D3.54Z
Vert. repeat:	0.500 (12.70)	TTL105-433-10	Hi-performance gloss white polyimide	TTRR-CR3.54Z
Web width:	3.350 (85.09)	TTL105-451-10	ESD gloss white polyimide	TTRR-D3.54Z
Labels per row: 3		TTL105-481-10	Low profile gloss white polyimide	TTRR-CR3.54Z
		TTL105-700-10	Gloss white polyester	TTRR-B3.54Z

TTL106	in. (mm)	Part Number	Material	Ribbon
Width:	1.000 (25.40)	TTL106-403-10	Gloss white polyimide	TTRR-D3.54Z
Height:	0.500 (12.70)	TTL106-411-10	Matte tan polyimide	TTRR-AK3.54Z
Horiz. repeat:	1.075 (27.32)	TTL106-416-10	Economy gloss white polyimide	TTRR-D3.54Z
Vert. repeat:	0.625 (16.09)	TTL106-433-10	Hi-performance gloss white polyimide	TTRR-CR3.54Z
Web width:	3.350 (85.09)	TTL106-451-10	ESD gloss white polyimide	TTRR-D3.54Z
Labels per row: 3		TTL106-481-10	Low profile gloss white polyimide	TTRR-CR3.54Z
		TTL106-700-10	Gloss white polyester	TTRR-B3.54Z

TTL107	in. (mm)	Part Number	Material	Ribbon
Width:	1.750 (44.45)	TTL107-403-10	Gloss white polyimide	TTRR-D2.36Z
Height:	0.250 (6.35)	TTL107-411-10	Matte tan polyimide	TTRR-AK2.36Z
Horiz. repeat:	N/A	TTL107-416-10	Economy gloss white polyimide	TTRR-D2.36Z
Vert. repeat:	0.375 (9.52)	TTL107-433-10	Hi-performance gloss white polyimide	TTRR-CR2.36Z
Web width:	1.900 (48.26)	TTL107-451-10	ESD gloss white polyimide	TTRR-D2.36Z
Labels per row: 1		TTL107-481-10	Low profile gloss white polyimide	TTRR-CR2.36Z
		TTL107-700-10	Gloss white polyester	TTRR-B2.36Z

TTL109	in. (mm)	Part Number	Material	Ribbon
Width:	2.000 (50.80)	TTL109-403-10	Gloss white polyimide	TTRR-D2.36Z
Height:	0.375 (9.53)	TTL109-411-10	Matte tan polyimide	TTRR-AK2.36Z
Horiz. repeat:	N/A	TTL109-416-10	Economy gloss white polyimide	TTRR-D2.36Z
Vert. repeat:	0.500 (12.70)	TTL109-433-10	Hi-performance gloss white polyimide	TTRR-CR2.36Z
Web width:	2.100 (53.34)	TTL109-451-10	ESD gloss white polyimide	TTRR-D2.36Z
Labels per row: 1		TTL109-481-10	Low profile gloss white polyimide	TTRR-CR2.36Z
		TTL109-700-10	Gloss white polyester	TTRR-B2.36Z

TTL110	in. (mm)	Part Number	Material	Ribbon
Width:	3.000 (76.20)	TTL110-403-10	Gloss white polyimide	TTRR-D3.54Z
Height:	0.3125 (7.94)	TTL110-411-10	Matte tan polyimide	TTRR-AK3.54Z
Horiz. repeat:	N/A	TTL110-416-10	Economy gloss white polyimide	TTRR-D3.54Z
Vert. repeat:	0.500 (12.70)	TTL110-433-10	Hi-performance gloss white polyimide	TTRR-CR3.54Z
Web width:	3.125 (79.38)	TTL110-451-10	ESD gloss white polyimide	TTRR-D3.54Z
Labels per row: 1		TTL110-481-10	Low profile gloss white polyimide	TTRR-CR3.54Z
		TTL110-700-10	Gloss white polyester	TTRR-B3.54Z

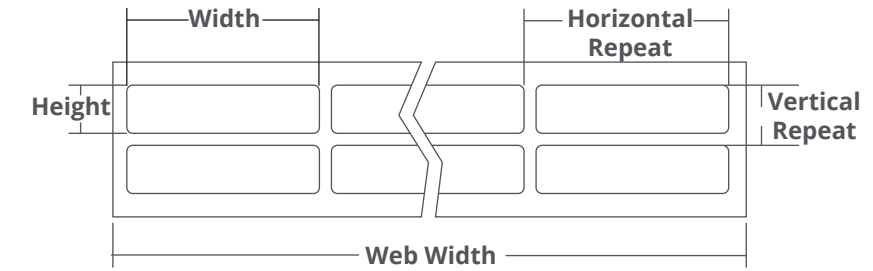
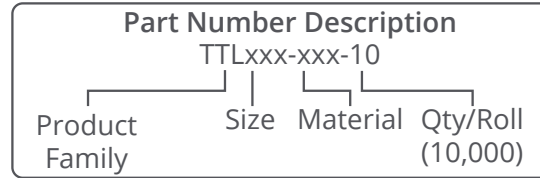
TTL111	in. (mm)	Part Number	Material	Ribbon
Width:	0.3125 (7.95)	TTL111-403-10	Gloss white polyimide	TTRR-D3.27Z
Height:	0.3125 (7.95)	TTL111-411-10	Matte tan polyimide	TTRR-AK3.15Z
Horiz. repeat:	0.500 (12.70)	TTL111-416-10	Economy gloss white polyimide	TTRR-D3.27Z
Vert. repeat:	0.500 (12.70)	TTL111-433-10	Hi-performance gloss white polyimide	TTRR-CR3.27Z
Web width:	2.500 (63.50)	TTL111-451-10	ESD gloss white polyimide	TTRR-D3.27Z
Labels per row: 5		TTL111-481-10	Low profile gloss white polyimide	TTRR-CR3.27Z
		TTL111-700-10	Gloss white polyester	TTRR-B3.27Z

TTL112	in. (mm)	Part Number	Material	Ribbon
Width:	0.500 (12.70)	TTL112-403-10	Gloss white polyimide	TTRR-D3.54Z
Height:	0.4375 (11.13)	TTL112-411-10	Matte tan polyimide	TTRR-AK3.54Z
Horiz. repeat:	0.662 (16.81)	TTL112-416-10	Economy gloss white polyimide	TTRR-D3.54Z
Vert. repeat:	0.5625 (14.28)	TTL112-433-10	Hi-performance gloss white polyimide	TTRR-CR3.54Z
Web width:	3.350 (85.09)	TTL112-451-10	ESD gloss white polyimide	TTRR-D3.54Z
Labels per row: 5		TTL112-481-10	Low profile gloss white polyimide	TTRR-CR3.54Z
		TTL112-700-10	Gloss white polyester	TTRR-B3.54Z

TTL113	in. (mm)	Part Number	Material	Ribbon
Width:	0.270 (6.86)	TTL113-403-10	Gloss white polyimide	TTRR-D3.27Z
Height:	0.270 (6.86)	TTL113-411-10	Matte tan polyimide	TTRR-AK3.15Z
Horiz. repeat:	0.500 (12.70)	TTL113-416-10	Economy gloss white polyimide	TTRR-D3.27Z
Vert. repeat:	0.500 (12.70)	TTL113-433-10	Hi-performance gloss white polyimide	TTRR-CR3.27Z
Web width:	2.500 (63.50)	TTL113-451-10	ESD gloss white polyimide	TTRR-D3.27Z
Labels per row: 5		TTL113-481-10	Low profile gloss white polyimide	TTRR-CR3.27Z
		TTL113-700-10	Gloss white polyester	TTRR-B3.27Z

TTL114	in. (mm)	Part Number	Material	Ribbon
Width:	1.500 (38.10)	TTL114-403-10	Gloss white polyimide	TTRR-D3.54Z
Height:	0.250 (6.35)	TTL114-411-10	Matte tan polyimide	TTRR-AK3.54Z
Horiz. repeat:	1.650 (41.91)	TTL114-416-10	Economy gloss white polyimide	TTRR-D3.54Z
Vert. repeat:	0.375 (9.53)	TTL114-433-10	Hi-performance gloss white polyimide	TTRR-CR3.54Z
Web width:	3.350 (85.09)	TTL114-451-10	ESD gloss white polyimide	TTRR-D3.54Z
Labels per row: 2		TTL114-481-10	Low profile gloss white polyimide	TTRR-CR3.54Z
		TTL114-700-10	Gloss white polyester	TTRR-B3.54Z

TTL115	in. (mm)	Part Number	Material	Ribbon
Width:	1.500 (38.10)	TTL115-403-10	Gloss white polyimide	TTRR-D3.54Z
Height:	0.125 (3.18)	TTL115-411-10	Matte tan polyimide	TTRR-AK3.54Z
Horiz. repeat:	1.650 (41.91)	TTL115-416-10	Economy gloss white polyimide	TTRR-D3.54Z
Vert. repeat:	0.250 (6.35)	TTL115-433-10	Hi-performance gloss white polyimide	TTRR-CR3.54Z
Web width:	3.350 (85.09)	TTL115-451-10	ESD gloss white polyimide	TTRR-D3.54Z
Labels per row: 2		TTL115-481-10	Low profile gloss white polyimide	TTRR-CR3.54Z
		TTL115-700-10	Gloss white polyester	TTRR-B3.54Z



TTL116	in. (mm)	Part Number	Material	Ribbon
Width:	0.375 (9.53)	TTL116-403-10	Gloss white polyimide	TTRR-D3.54Z
Height:	0.375 (9.53)	TTL116-411-10	Matte tan polyimide	TTRR-AK3.54Z
Horiz. repeat:	0.4375 (11.11)	TTL116-416-10	Economy gloss white polyimide	TTRR-D3.54Z
Vert. repeat:	0.500 (12.70)	TTL116-433-10	Hi-performance gloss white polyimide	TTRR-CR3.54Z
Web width:	3.200 (81.28)	TTL116-451-10	ESD gloss white polyimide	TTRR-D3.54Z
Labels per row: 7		TTL116-481-10	Low profile gloss white polyimide	TTRR-CR3.54Z
		TTL116-700-10	Gloss white polyester	TTRR-B3.54Z

TTL117	in. (mm)	Part Number	Material	Ribbon
Width:	2.000 (50.80)	TTL117-403-10	Gloss white polyimide	TTRR-D2.36Z
Height:	0.250 (6.35)	TTL117-411-10	Matte tan polyimide	TTRR-AK3.15Z
Horiz. repeat:	N/A	TTL117-416-10	Economy gloss white polyimide	TTRR-D2.36Z
Vert. repeat:	0.375 (9.53)	TTL117-433-10	Hi-performance gloss white polyimide	TTRR-CR2.36Z
Web width:	2.200 (55.88)	TTL117-451-10	ESD gloss white polyimide	TTRR-D2.36Z
Labels per row: 1		TTL117-481-10	Low profile gloss white polyimide	TTRR-CR2.36Z
		TTL117-700-10	Gloss white polyester	TTRR-B2.36Z

TTL118	in. (mm)	Part Number	Material	Ribbon
Width:	1.250 (31.75)	TTL118-403-10	Gloss white polyimide	TTRR-D3.27Z
Height:	0.250 (6.35)	TTL118-411-10	Matte tan polyimide	TTRR-AK3.54Z
Horiz. repeat:	1.300 (33.02)	TTL118-416-10	Economy gloss white polyimide	TTRR-D3.27Z
Vert. repeat:	0.375 (9.53)	TTL118-433-10	Hi-performance gloss white polyimide	TTRR-CR3.27Z
Web width:	2.750 (69.85)	TTL118-451-10	ESD gloss white polyimide	TTRR-D3.27Z
Labels per row: 2		TTL118-481-10	Low profile gloss white polyimide	TTRR-CR3.27Z
		TTL118-700-10	Gloss white polyester	TTRR-B3.27Z

TTL119	in. (mm)	Part Number	Material	Ribbon
Width:	1.500 (38.10)	TTL119-403-10	Gloss white polyimide	TTRR-D3.54Z
Height:	0.500 (12.70)	TTL119-411-10	Matte tan polyimide	TTRR-AK3.54Z
Horiz. repeat:	1.650 (41.91)	TTL119-416-10	Economy gloss white polyimide	TTRR-D3.54Z
Vert. repeat:	0.625 (15.88)	TTL119-433-10	Hi-performance gloss white polyimide	TTRR-CR3.54Z
Web width:	3.350 (85.09)	TTL119-451-10	ESD gloss white polyimide	TTRR-D3.54Z
Labels per row: 2		TTL119-481-10	Low profile gloss white polyimide	TTRR-CR3.54Z
		TTL119-700-10	Gloss white polyester	TTRR-B3.54Z

TTL120	in. (mm)	Part Number	Material	Ribbon
Width:	2.000 (50.80)	TTL120-403-10	Gloss white polyimide	TTRR-D2.36Z
Height:	0.500 (12.70)	TTL120-411-10	Matte tan polyimide	TTRR-AK3.15Z
Horiz. repeat:	N/A	TTL120-416-10	Economy gloss white polyimide	TTRR-D2.36Z
Vert. repeat:	0.625 (15.88)	TTL120-433-10	Hi-performance gloss white polyimide	TTRR-CR2.36Z
Web width:	2.125 (53.98)	TTL120-451-10	ESD gloss white polyimide	TTRR-D2.36Z
Labels per row: 1		TTL120-481-10	Low profile gloss white polyimide	TTRR-CR2.36Z
		TTL120-700-10	Gloss white polyester	TTRR-B2.36Z

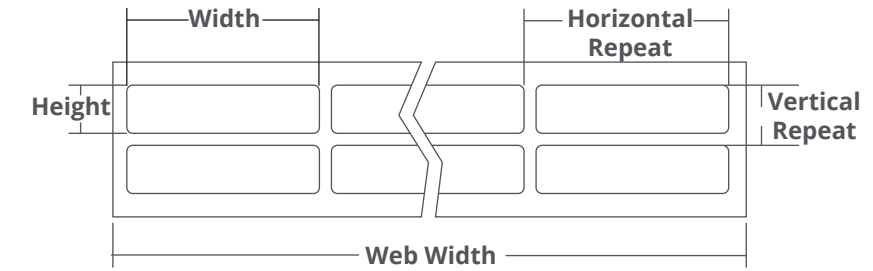
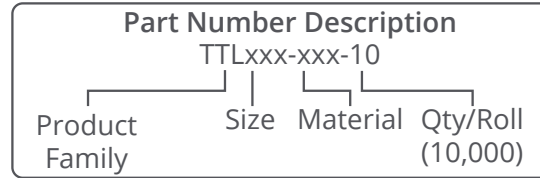
TTL121	in. (mm)	Part Number	Material	Ribbon
Width:	0.500 (12.70)	TTL121-403-10	Gloss white polyimide	TTRR-D3.54Z
Height:	0.200 (5.08)	TTL121-411-10	Matte tan polyimide	TTRR-AK3.54Z
Horiz. repeat:	0.625 (15.88)	TTL121-416-10	Economy gloss white polyimide	TTRR-D3.54Z
Vert. repeat:	0.300 (7.62)	TTL121-433-10	Hi-performance gloss white polyimide	TTRR-CR3.54Z
Web width:	3.200 (81.28)	TTL121-451-10	ESD gloss white polyimide	TTRR-D3.54Z
Labels per row: 5		TTL121-481-10	Low profile gloss white polyimide	TTRR-CR3.54Z
		TTL121-700-10	Gloss white polyester	TTRR-B3.54Z

TTL122	in. (mm)	Part Number	Material	Ribbon
Width:	0.700 (17.78)	TTL122-403-10	Gloss white polyimide	TTRR-D3.27Z
Height:	0.375 (9.525)	TTL122-411-10	Matte tan polyimide	TTRR-AK3.54Z
Horiz. repeat:	0.750 (19.05)	TTL122-416-10	Economy gloss white polyimide	TTRR-D3.27Z
Vert. repeat:	0.475 (12.07)	TTL122-433-10	Hi-performance gloss white polyimide	TTRR-CR3.27Z
Web width:	3.150 (80.01)	TTL122-451-10	ESD gloss white polyimide	TTRR-D3.27Z
Labels per row: 4		TTL122-481-10	Low profile gloss white polyimide	TTRR-CR3.27Z
		TTL122-700-10	Gloss white polyester	TTRR-B3.27Z

TTL123	in. (mm)	Part Number	Material	Ribbon
Width:	0.750 (19.05)	TTL123-403-10	Gloss white polyimide	TTRR-D3.54Z
Height:	0.750 (19.05)	TTL123-411-10	Matte tan polyimide	TTRR-AK3.54Z
Horiz. repeat:	0.800 (20.32)	TTL123-416-10	Economy gloss white polyimide	TTRR-D3.54Z
Vert. repeat:	0.875 (22.23)	TTL123-433-10	Hi-performance gloss white polyimide	TTRR-CR3.54Z
Web width:	3.350 (85.09)	TTL123-451-10	ESD gloss white polyimide	TTRR-D3.54Z
Labels per row: 4		TTL123-481-10	Low profile gloss white polyimide	TTRR-CR3.54Z
		TTL123-700-10	Gloss white polyester	TTRR-B3.54Z

TTL124	in. (mm)	Part Number	Material	Ribbon
Width:	0.250 (6.35)	TTL124-403-10	Gloss white polyimide	TTRR-D2.36Z
Height:	0.250 (6.35)	TTL124-411-10	Matte tan polyimide	TTRR-AK3.15Z
Horiz. repeat:	0.250 (6.35)	TTL124-416-10	Economy gloss white polyimide	TTRR-D2.36Z
Vert. repeat:	0.375 (9.53)	TTL124-433-10	Hi-performance gloss white polyimide	TTRR-CR2.36Z
Web width:	2.125 (53.98)	TTL124-451-10	ESD gloss white polyimide	TTRR-D2.36Z
Labels per row: 8		TTL124-481-10	Low profile gloss white polyimide	TTRR-CR2.36Z
		TTL124-700-10	Gloss white polyester	TTRR-B2.36Z

TTL125	in. (mm)	Part Number	Material	Ribbon
Width:	0.375 (9.53)	TTL125-403-10	Gloss white polyimide	TTRR-D2.36Z
Height:	0.375 (9.53)	TTL125-411-10	Matte tan polyimide	TTRR-AK3.15Z
Horiz. repeat:	0.500 (12.70)	TTL125-416-10	Economy gloss white polyimide	TTRR-D2.36Z
Vert. repeat:	0.500 (12.70)	TTL125-433-10	Hi-performance gloss white polyimide	TTRR-CR2.36Z
Web width:	2.000 (50.80)	TTL125-451-10	ESD gloss white polyimide	TTRR-D2.36Z
Labels per row: 4		TTL125-481-10	Low profile gloss white polyimide	TTRR-CR2.36Z
		TTL125-700-10	Gloss white polyester	TTRR-B2.36Z



TTL126	in. (mm)	Part Number	Material	Ribbon
Width:	0.500 (12.70)	TTL126-403-10	Gloss white polyimide	TTRR-D3.27Z
Height:	0.200 (5.08)	TTL126-411-10	Matte tan polyimide	TTRR-AK3.54Z
Horiz. repeat:	0.625 (15.88)	TTL126-416-10	Economy gloss white polyimide	TTRR-D3.27Z
Vert. repeat:	0.300 (7.62)	TTL126-433-10	Hi-performance gloss white polyimide	TTRR-CR3.27Z
Web width:	2.500 (63.50)	TTL126-451-10	ESD gloss white polyimide	TTRR-D3.27Z
Labels per row: 4		TTL126-481-10	Low profile gloss white polyimide	TTRR-CR3.27Z
		TTL126-700-10	Gloss white polyester	TTRR-B3.27Z

TTL127	in. (mm)	Part Number	Material	Ribbon
Width:	0.500 (12.70)	TTL127-403-10	Gloss white polyimide	TTRR-D2.36Z
Height:	0.4375 (11.13)	TTL127-411-10	Matte tan polyimide	TTRR-AK2.36Z
Horiz. repeat:	0.662 (16.83)	TTL127-416-10	Economy gloss white polyimide	TTRR-D2.36Z
Vert. repeat:	0.5625 (14.29)	TTL127-433-10	Hi-performance gloss white polyimide	TTRR-CR2.36Z
Web width:	2.024 (51.41)	TTL127-451-10	ESD gloss white polyimide	TTRR-D2.36Z
Labels per row: 3		TTL127-481-10	Low profile gloss white polyimide	TTRR-CR2.36Z
		TTL127-700-10	Gloss white polyester	TTRR-B2.36Z

TTL128	in. (mm)	Part Number	Material	Ribbon
Width:	0.650 (16.51)	TTL128-403-10	Gloss white polyimide	TTRR-D2.36Z
Height:	0.200 (5.08)	TTL128-411-10	Matte tan polyimide	TTRR-AK2.36Z
Horiz. repeat:	0.800 (20.25)	TTL128-416-10	Economy gloss white polyimide	TTRR-D2.36Z
Vert. repeat:	0.375 (9.53)	TTL128-433-10	Hi-performance gloss white polyimide	TTRR-CR2.36Z
Web width:	1.600 (40.64)	TTL128-451-10	ESD gloss white polyimide	TTRR-D2.36Z
Labels per row: 2		TTL128-481-10	Low profile gloss white polyimide	TTRR-CR2.36Z
		TTL128-700-10	Gloss white polyester	TTRR-B2.36Z

TTL129	in. (mm)	Part Number	Material	Ribbon
Width:	0.750 (19.05)	TTL129-403-10	Gloss white polyimide	TTRR-D1.57Z
Height:	0.250 (6.35)	TTL129-411-10	Matte tan polyimide	TTRR-AK1.57Z
Horiz. repeat:	N/A	TTL129-416-10	Economy gloss white polyimide	TTRR-D1.57Z
Vert. repeat:	0.375 (9.53)	TTL129-433-10	Hi-performance gloss white polyimide	TTRR-CR1.57Z
Web width:	0.875 (22.23)	TTL129-451-10	ESD gloss white polyimide	TTRR-D1.57Z
Labels per row: 1		TTL129-481-10	Low profile gloss white polyimide	TTRR-CR1.57Z
		TTL129-700-10	Gloss white polyester	TTRR-B1.57Z

TTL130	in. (mm)	Part Number	Material	Ribbon
Width:	0.900 (22.86)	TTL130-403-10	Gloss white polyimide	TTRR-D1.57Z
Height:	0.250 (6.35)	TTL130-411-10	Matte tan polyimide	TTRR-AK1.57Z
Horiz. repeat:	N/A	TTL130-416-10	Economy gloss white polyimide	TTRR-D1.57Z
Vert. repeat:	0.375 (9.53)	TTL130-433-10	Hi-performance gloss white polyimide	TTRR-CR1.57Z
Web width:	1.100 (27.94)	TTL130-451-10	ESD gloss white polyimide	TTRR-D1.57Z
Labels per row: 1		TTL130-481-10	Low profile gloss white polyimide	TTRR-CR1.57Z
		TTL130-700-10	Gloss white polyester	TTRR-B1.57Z

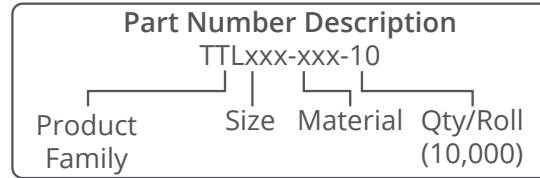
TTL131	in. (mm)	Part Number	Material	Ribbon
Width:	1.000 (25.40)	TTL131-403-10	Gloss white polyimide	TTRR-D1.57Z
Height:	0.375 (9.53)	TTL131-411-10	Matte tan polyimide	TTRR-AK1.57Z
Horiz. repeat:	N/A	TTL131-416-10	Economy gloss white polyimide	TTRR-D1.57Z
Vert. repeat:	0.500 (12.70)	TTL131-433-10	Hi-performance gloss white polyimide	TTRR-CR1.57Z
Web width:	1.275 (32.38)	TTL131-451-10	ESD gloss white polyimide	TTRR-D1.57Z
Labels per row: 1		TTL131-481-10	Low profile gloss white polyimide	TTRR-CR1.57Z
		TTL131-700-10	Gloss white polyester	TTRR-B1.57Z

TTL132	in. (mm)	Part Number	Material	Ribbon
Width:	1.500 (38.10)	TTL132-403-10	Gloss white polyimide	TTRR-D2.36Z
Height:	0.250 (6.35)	TTL132-411-10	Matte tan polyimide	TTRR-AK3.15Z
Horiz. repeat:	N/A	TTL132-416-10	Economy gloss white polyimide	TTRR-D2.36Z
Vert. repeat:	0.350 (8.89)	TTL132-433-10	Hi-performance gloss white polyimide	TTRR-CR2.36Z
Web width:	1.700 (43.18)	TTL132-451-10	ESD gloss white polyimide	TTRR-D2.36Z
Labels per row: 1		TTL132-481-10	Low profile gloss white polyimide	TTRR-CR2.36Z
		TTL132-700-10	Gloss white polyester	TTRR-B2.36Z

TTL133	in. (mm)	Part Number	Material	Ribbon
Width:	1.500 (38.10)	TTL133-403-10	Gloss white polyimide	TTRR-D2.36Z
Height:	0.125 (3.18)	TTL133-411-10	Matte tan polyimide	TTRR-AK3.15Z
Horiz. repeat:	N/A	TTL133-416-10	Economy gloss white polyimide	TTRR-D2.36Z
Vert. repeat:	0.225 (5.72)	TTL133-433-10	Hi-performance gloss white polyimide	TTRR-CR2.36Z
Web width:	1.700 (43.18)	TTL133-451-10	ESD gloss white polyimide	TTRR-D2.36Z
Labels per row: 1		TTL133-481-10	Low profile gloss white polyimide	TTRR-CR2.36Z
		TTL133-700-10	Gloss white polyester	TTRR-B2.36Z

TTL134	in. (mm)	Part Number	Material	Ribbon
Width:	1.250 (31.75)	TTL134-403-10	Gloss white polyimide	TTRR-D1.57Z
Height:	0.250 (6.35)	TTL134-411-10	Matte tan polyimide	TTRR-AK1.57Z
Horiz. repeat:	N/A	TTL134-416-10	Economy gloss white polyimide	TTRR-D1.57Z
Vert. repeat:	0.350 (8.89)	TTL134-433-10	Hi-performance gloss white polyimide	TTRR-CR1.57Z
Web width:	1.450 (36.83)	TTL134-451-10	ESD gloss white polyimide	TTRR-D1.57Z
Labels per row: 1		TTL134-481-10	Low profile gloss white polyimide	TTRR-CR1.57Z
		TTL134-700-10	Gloss white polyester	TTRR-B1.57Z

TTL135	in. (mm)	Part Number	Material	Ribbon
Width:	1.000 (25.40)	TTL135-403-10	Gloss white polyimide	TTRR-D1.57Z
Height:	0.250 (6.35)	TTL135-411-10	Matte tan polyimide	TTRR-AK1.57Z
Horiz. repeat:	N/A	TTL135-416-10	Economy gloss white polyimide	TTRR-D1.57Z
Vert. repeat:	0.375 (9.53)	TTL135-433-10	Hi-performance gloss white polyimide	TTRR-CR1.57Z
Web width:	1.125 (28.58)	TTL135-451-10	ESD gloss white polyimide	TTRR-D1.57Z
Labels per row: 1		TTL135-481-10	Low profile gloss white polyimide	TTRR-CR1.57Z
		TTL135-700-10	Gloss white polyester	TTRR-B1.57Z



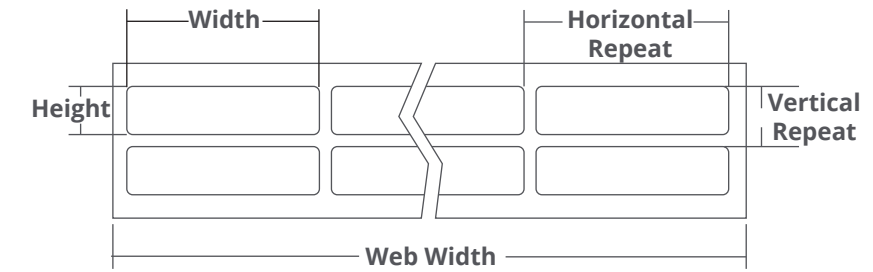
TTL136	in. (mm)	Part Number	Material	Ribbon
Width:	0.650 (16.51)	TTL136-403-10	Gloss white polyimide	TTRR-D1.57Z
Height:	0.200 (5.08)	TTL136-411-10	Matte tan polyimide	TTRR-AK1.57Z
Horiz. repeat:	N/A	TTL136-416-10	Economy gloss white polyimide	TTRR-D1.57Z
Vert. repeat:	0.300 (7.62)	TTL136-433-10	Hi-performance gloss white polyimide	TTRR-CR1.57Z
Web width:	0.850 (21.59)	TTL136-451-10	ESD gloss white polyimide	TTRR-D1.57Z
Labels per row:	1	TTL136-481-10	Low profile gloss white polyimide	TTRR-CR1.57Z
		TTL136-700-10	Gloss white polyester	TTRR-B1.57Z

TTL137	in. (mm)	Part Number	Material	Ribbon
Width:	0.600 (15.24)	TTL137-403-10	Gloss white polyimide	TTRR-D1.57Z
Height:	0.250 (6.35)	TTL137-411-10	Matte tan polyimide	TTRR-AK1.57Z
Horiz. repeat:	N/A	TTL137-416-10	Economy gloss white polyimide	TTRR-D1.57Z
Vert. repeat:	0.375 (9.53)	TTL137-433-10	Hi-performance gloss white polyimide	TTRR-CR1.57Z
Web width:	0.850 (21.51)	TTL137-451-10	ESD gloss white polyimide	TTRR-D1.57Z
Labels per row:	1	TTL137-481-10	Low profile gloss white polyimide	TTRR-CR1.57Z
		TTL137-700-10	Gloss white polyester	TTRR-B1.57Z

TTL138	in. (mm)	Part Number	Material	Ribbon
Width:	1.100 (27.94)	TTL138-403-10	Gloss white polyimide	TTRR-D3.27Z
Height:	0.380 (9.53)	TTL138-411-10	Matte tan polyimide	TTRR-AK3.54Z
Horiz. repeat:	1.200 (30.48)	TTL138-416-10	Economy gloss white polyimide	TTRR-D3.27Z
Vert. repeat:	0.500 (12.70)	TTL138-433-10	Hi-performance gloss white polyimide	TTRR-CR3.27Z
Web width:	2.500 (63.50)	TTL138-451-10	ESD gloss white polyimide	TTRR-D3.27Z
Labels per row:	2	TTL138-481-10	Low profile gloss white polyimide	TTRR-CR3.27Z
		TTL138-700-10	Gloss white polyester	TTRR-B3.27Z

TTL139	in. (mm)	Part Number	Material	Ribbon
Width:	0.300 (7.62)	TTL139-403-10	Gloss white polyimide	TTRR-D3.27Z
Height:	0.200 (5.08)	TTL139-411-10	Matte tan polyimide	TTRR-AK3.54Z
Horiz. repeat:	0.400 (10.16)	TTL139-416-10	Economy gloss white polyimide	TTRR-D3.27Z
Vert. repeat:	0.300 (7.62)	TTL139-433-10	Hi-performance gloss white polyimide	TTRR-CR3.27Z
Web width:	2.500 (63.50)	TTL139-451-10	ESD gloss white polyimide	TTRR-D3.27Z
Labels per row:	6	TTL139-481-10	Low profile gloss white polyimide	TTRR-CR3.27Z
		TTL139-700-10	Gloss white polyester	TTRR-B3.27Z

TTL140	in. (mm)	Part Number	Material	Ribbon
Width:	0.170 (4.318)	TTL140-403-10	Gloss white polyimide	TTRR-D1.57Z
Height:	0.130 (3.30)	TTL140-411-10	Matte tan polyimide	TTRR-AK1.57Z
Horiz. repeat:	0.300 (7.62)	TTL140-416-10	Economy gloss white polyimide	TTRR-D1.57Z
Vert. repeat:	0.4375 (11.11)	TTL140-433-10	Hi-performance gloss white polyimide	TTRR-CR1.57Z
Web width:	1.500 (38.10)	TTL140-451-10	ESD gloss white polyimide	TTRR-D1.57Z
Labels per row:	5	TTL140-481-10	Low profile gloss white polyimide	TTRR-CR1.57Z
		TTL140-700-10	Gloss white polyester	TTRR-B1.57Z



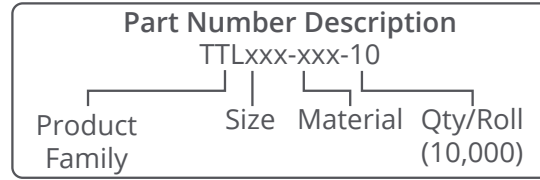
TTL141	in. (mm)	Part Number	Material	Ribbon
Width:	0.750 (19.05)	TTL141-403-10	Gloss white polyimide	TTRR-D4.33Z
Height:	0.250 (6.35)	TTL141-411-10	Matte tan polyimide	TTRR-AK4.33Z
Horiz. repeat:	0.850 (21.59)	TTL141-416-10	Economy gloss white polyimide	TTRR-D4.33Z
Vert. repeat:	0.375 (9.53)	TTL141-433-10	Hi-performance gloss white polyimide	TTRR-CR4.33Z
Web width:	3.540 (89.92)	TTL141-451-10	ESD gloss white polyimide	TTRR-D4.33Z
Labels per row:	4	TTL141-481-10	Low profile gloss white polyimide	TTRR-CR4.33Z
		TTL141-700-10	Gloss white polyester	TTRR-B4.33Z

TTL144	in. (mm)	Part Number	Material	Ribbon
Width:	1.000 (25.40)	TTL144-403-10	Gloss white polyimide	TTRR-D3.54Z
Height:	1.000 (25.40)	TTL144-411-10	Matte tan polyimide	TTRR-AK3.54Z
Horiz. repeat:	1.100 (27.94)	TTL144-416-10	Economy gloss white polyimide	TTRR-D3.54Z
Vert. repeat:	1.125 (28.58)	TTL144-433-10	Hi-performance gloss white polyimide	TTRR-CR3.54Z
Web width:	3.440 (87.38)	TTL144-451-10	ESD gloss white polyimide	TTRR-D3.54Z
Labels per row:	3	TTL144-481-10	Low profile gloss white polyimide	TTRR-CR3.54Z
		TTL144-700-10	Gloss white polyester	TTRR-B3.54Z

TTL145	in. (mm)	Part Number	Material	Ribbon
Width:	0.449 (11.41)	TTL145-403-25	Gloss white polyimide	TTRR-D3.27Z
Height:	0.157 (3.988)	TTL145-411-25	Matte tan polyimide	TTRR-AK3.54Z
Horiz. repeat:	0.449 (11.41)	TTL145-416-25	Economy gloss white polyimide	TTRR-D3.27Z
Vert. repeat:	0.275 (6.98)	TTL145-433-25	Hi-performance gloss white polyimide	TTRR-CR3.27Z
Web width:	2.940 (74.68)	TTL145-451-25	ESD gloss white polyimide	TTRR-D3.27Z
Labels per row:	6	TTL145-481-25	Low profile gloss white polyimide	TTRR-CR3.27Z
		TTL145-700-25	Gloss white polyester	TTRR-B3.27Z

TTL146	in. (mm)	Part Number	Material	Ribbon
Width:	0.315 (8.00)	TTL146-403-10	Gloss white polyimide	TTRR-D3.54Z
Height:	0.315 (8.00)	TTL146-411-10	Matte tan polyimide	TTRR-AK3.54Z
Horiz. repeat:	0.390 (9.93)	TTL146-416-10	Economy gloss white polyimide	TTRR-D3.54Z
Vert. repeat:	0.406 (10.32)	TTL146-433-10	Hi-performance gloss white polyimide	TTRR-CR3.54Z
Web width:	3.280 (83.31)	TTL146-451-10	ESD gloss white polyimide	TTRR-D3.54Z
Labels per row:	8	TTL146-481-10	Low profile gloss white polyimide	TTRR-CR3.54Z
		TTL146-700-10	Gloss white polyester	TTRR-B3.54Z

TTL147	in. (mm)	Part Number	Material	Ribbon
Width:	1.000 (25.40)	TTL147-403-10	Gloss white polyimide	TTRR-D1.57Z
Height:	0.500 (12.70)	TTL147-411-10	Matte tan polyimide	TTRR-AK1.57Z
Horiz. repeat:	N/A	TTL147-416-10	Economy gloss white polyimide	TTRR-D1.57Z
Vert. repeat:	0.625 (15.88)	TTL147-433-10	Hi-performance gloss white polyimide	TTRR-CR1.57Z
Web width:	1.200 (30.48)	TTL147-451-10	ESD gloss white polyimide	TTRR-D1.57Z
Labels per row:	1	TTL147-481-10	Low profile gloss white polyimide	TTRR-CR1.57Z
		TTL147-700-10	Gloss white polyester	TTRR-B1.57Z



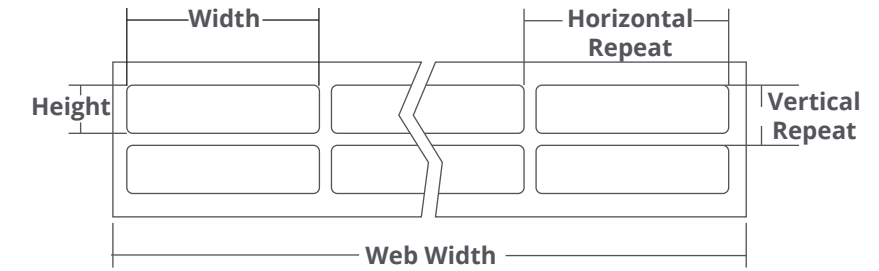
TTL148	in. (mm)	Part Number	Material	Ribbon
Width:	0.250 (6.35)	TTL148-403-10	Gloss white polyimide	TTRR-D3.27Z
Height:	0.250 (6.35)	TTL148-411-10	Matte tan polyimide	TTRR-AK3.15Z
Horiz. repeat:	0.350 (8.89)	TTL148-416-10	Economy gloss white polyimide	TTRR-D3.27Z
Vert. repeat:	0.375 (9.53)	TTL148-433-10	Hi-performance gloss white polyimide	TTRR-CR3.27Z
Web width:	2.500 (63.50)	TTL148-451-10	ESD gloss white polyimide	TTRR-D3.27Z
Labels per row:	7	TTL148-481-10	Low profile gloss white polyimide	TTRR-CR3.27Z
		TTL148-700-10	Gloss white polyester	TTRR-B3.27Z

TTL149	in. (mm)	Part Number	Material	Ribbon
Width:	1.250 (31.75)	TTL149-403-10	Gloss white polyimide	TTRR-D3.27Z
Height:	0.375 (9.53)	TTL149-411-10	Matte tan polyimide	TTRR-AK3.15Z
Horiz. repeat:	1.300 (33.02)	TTL149-416-10	Economy gloss white polyimide	TTRR-D3.27Z
Vert. repeat:	0.500 (12.70)	TTL149-433-10	Hi-performance gloss white polyimide	TTRR-CR3.27Z
Web width:	2.750 (69.85)	TTL149-451-10	ESD gloss white polyimide	TTRR-D3.27Z
Labels per row:	2	TTL149-481-10	Low profile gloss white polyimide	TTRR-CR3.27Z
		TTL149-700-10	Gloss white polyester	TTRR-B3.27Z

TTL151	in. (mm)	Part Number	Material	Ribbon
Width:	0.700 (17.78)	TTL151-403-10	Gloss white polyimide	TTRR-D1.57Z
Height:	0.375 (9.53)	TTL151-411-10	Matte tan polyimide	TTRR-AK1.57Z
Horiz. repeat:	N/A	TTL151-416-10	Economy gloss white polyimide	TTRR-D1.57Z
Vert. repeat:	0.4792 (12.17)	TTL151-433-10	Hi-performance gloss white polyimide	TTRR-CR1.57Z
Web width:	0.800 (20.32)	TTL151-451-10	ESD gloss white polyimide	TTRR-D1.57Z
Labels per row:	1	TTL151-481-10	Low profile gloss white polyimide	TTRR-CR1.57Z
		TTL151-700-10	Gloss white polyester	TTRR-B1.57Z

TTL152	in. (mm)	Part Number	Material	Ribbon
Width:	1.000 (25.40)	TTL152-403-10	Gloss white polyimide	TTRR-D3.54Z
Height:	0.187 (4.75)	TTL152-411-10	Matte tan polyimide	TTRR-AK3.54Z
Horiz. repeat:	1.125 (28.58)	TTL152-416-10	Economy gloss white polyimide	TTRR-D3.54Z
Vert. repeat:	0.3125 (7.94)	TTL152-433-10	Hi-performance gloss white polyimide	TTRR-CR4.33Z
Web width:	3.375 (85.73)	TTL152-451-10	ESD semi-gloss white polyimide	TTRR-D3.54Z
Labels per row:	3	TTL152-481-10	Low profile gloss white polyimide	TTRR-CR4.33Z
		TTL152-700-10	Gloss white polyester	TTRR-B3.54Z

TTL153	in. (mm)	Part Number	Material	Ribbon
Width:	3.000 (76.20)	TTL153-403-2.5	Gloss white polyimide	TTRR-D3.27Z
Height:	0.250 (6.35)	TTL153-411-2.5	Matte tan polyimide	TTRR-AK3.54Z
Horiz. repeat:	N/A	TTL153-416-2.5	Economy gloss white polyimide	TTRR-D3.27Z
Vert. repeat:	0.375 (9.53)	TTL153-433-2.5	Hi-performance gloss white polyimide	TTRR-CR3.27Z
Web width:	3.200 (81.28)	TTL153-451-2.5	ESD semi-gloss white polyimide	TTRR-D3.27Z
Labels per row:	1	TTL153-481-2.5	Low profile gloss white polyimide	TTRR-CR3.27Z
		TTL153-700-2.5	Gloss white polyester	TTRR-B3.27Z



TTL156	in. (mm)	Part Number	Material	Ribbon
Width:	1.000 (25.40)	TTL156-403-10	Gloss white polyimide	TTRR-D1.57Z
Height:	0.1875 (4.76)	TTL156-411-10	Matte tan polyimide	TTRR-AK1.57Z
Horiz. repeat:	N/A	TTL156-416-10	Economy gloss white polyimide	TTRR-D1.57Z
Vert. repeat:	0.2875 (7.30)	TTL156-433-10	Hi-performance gloss white polyimide	TTRR-CR1.57Z
Web width:	1.200 (30.48)	TTL156-451-10	ESD gloss white polyimide	TTRR-D1.57Z
Labels per row:	1	TTL156-481-10	Low profile gloss white polyimide	TTRR-CR1.57Z
		TTL156-700-10	Gloss white polyester	TTRR-B1.57Z

TTL157	in. (mm)	Part Number	Material	Ribbon
Width:	0.500 (12.70)	TTL157-403-10	Gloss white polyimide	TTRR-D1.57Z
Height:	0.200 (5.08)	TTL157-411-10	Matte tan polyimide	TTRR-AK1.57Z
Horiz. repeat:	N/A	TTL157-416-10	Economy gloss white polyimide	TTRR-D1.57Z
Vert. repeat:	0.300 (7.62)	TTL157-433-10	Hi-performance gloss white polyimide	TTRR-CR1.57Z
Web width:	0.700 (17.78)	TTL157-451-10	ESD gloss white polyimide	TTRR-D1.57Z
Labels per row:	1	TTL157-481-10	Low profile gloss white polyimide	TTRR-CR1.57Z
		TTL157-700-10	Gloss white polyester	TTRR-B1.57Z

TTL158	in. (mm)	Part Number	Material	Ribbon
Width:	1.375 (34.93)	TTL158-403-10	Gloss white polyimide	TTRR-D2.36Z
Height:	0.250 (6.35)	TTL158-411-10	Matte tan polyimide	TTRR-AK2.36Z
Horiz. repeat:	N/A	TTL158-416-10	Economy gloss white polyimide	TTRR-D2.36Z
Vert. repeat:	0.350 (8.89)	TTL158-433-10	Hi-performance gloss white polyimide	TTRR-CR2.36Z
Web width:	1.600 (40.64)	TTL158-451-10	ESD gloss white polyimide	TTRR-D2.36Z
Labels per row:	1	TTL158-481-10	Low profile gloss white polyimide	TTRR-CR2.36Z
		TTL158-700-10	Gloss white polyester	TTRR-B2.36Z

TTL159	in. (mm)	Part Number	Material	Ribbon
Width:	2.000 (50.80)	TTL159-403-10	Gloss white polyimide	TTRR-D2.36Z
Height:	0.400 (10.16)	TTL159-411-10	Matte tan polyimide	TTRR-AK2.36Z
Horiz. repeat:	N/A	TTL159-416-10	Economy gloss white polyimide	TTRR-D2.36Z
Vert. repeat:	0.500 (12.70)	TTL159-433-10	Hi-performance gloss white polyimide	TTRR-CR2.36Z
Web width:	2.200 (55.88)	TTL159-451-10	ESD gloss white polyimide	TTRR-D2.36Z
Labels per row:	1	TTL159-481-10	Low profile gloss white polyimide	TTRR-CR2.36Z
		TTL159-700-10	Gloss white polyester	TTRR-B2.36Z

Need a custom size or configuration? No problem!

Custom versions of our TTL® Series labels are a core competency at IDENTCO®.

[Contact us for a quote.](#)



ULTIMATE PRINT PERFORMANCE FOR CHALLENGING APPLICATIONS



A ribbon is not “just a ribbon”. To achieve ultimate print performance in harsh environments, proper chemical compatibility between the label topcoat and the thermal transfer ribbon formulation is paramount. All ribbon/topcoat combinations have been tested in IDENTCO®’s R&D lab to ensure the right combination is recommended for your application. In addition, our label/ribbon combinations have gone through the rigid testing protocols at industry leaders KYZEN, ZESTRON, and kolb to determine the best label materials and ribbons for their range of cleaning chemistries. TTL®100 Series label materials and TTRR™ Series ribbons have passed UL testing and are required to be used together for UL recognition.

CHOOSE FROM SIX FORMULATIONS

TTRR™-A SERIES RESIN/WAX

IDENTCO’s TTRR-A is a resin/wax formulation recommended for printing on paper and matte materials and designed for indoor use. It has precise sensitivity for high-speed printing with the assurance of consistent print quality and optimal clarity. When printed on the recommended IDENTCO label material, the TTRR-A resists smudging, solvents, and abrasion. Halogen free.

TTRR™-AK SERIES RESIN/WAX

The TTRR-AK is a high-performance resin/wax ribbon specifically designed to be used on IDENTCO’s TT411 matte tan polyimide material. This ribbon is formulated to optimize overall print quality and clarity when printed at high speed and used with the recommended IDENTCO label material. TTRR-AK is designed to offer superior smudge and chemical resistance. Halogen free.

TTRR™-B SERIES RESIN

For printing on gloss materials where harsh chemical, heat, and abrasion resistance is required, IDENTCO’s TTRR-B high-performance resin ribbon is ideal. When printed on the recommended IDENTCO label material, this ribbon offers consistent, optimal print clarity. The TTRR-B is an excellent choice for ultra-fine and high-density printing of 2D data matrix barcodes and micro text. Halogen free.

TTRR™-CR SERIES RESIN

The TTRR-CR formulation yields a high-performance ultra-durable chemical resistant ribbon specifically engineered to offer superior chemical, heat, and ultra-durable scratch and abrasion resistance when used with IDENTCO TT433 gloss white polyimide material. The TT433/TTRR-CR combination is the first product on the market to test successfully against ZESTRON’s VIGON A201 and ATRON AC205, and KYZEN’s Aquanox line of cleaning products. Halogen free.

TTRR™-D SERIES RESIN

IDENTCO’s TTRR-D is a high-performance resin ribbon that offers optimal print quality and clarity when printed on IDENTCO polyester materials. This ribbon is ideal for printing on gloss materials where superior chemical, heat, and abrasion resistance are required. TTRR-D can be used in printed circuit board applications at temperatures up to 250 C. Halogen free.

TTRR™-V SERIES RESIN

TTRR-V is a versatile resin ribbon that is an excellent choice for printing on paper, polypropylene, polyester, and polyimide. It is ideal for applications that require superior resistance to smudging, smearing, chemicals, and elevated temperatures. Halogen free.

“DID YOU KNOW?”

TTRR Series ribbons pass rigorous quality testing to meet the performance requirements of the TTL100 and TTL300 Series labels. These ribbons are ideal for products which require UL/CSA recognition. Recognition is contingent upon printing with the appropriate ribbon and material, and the critical bond between the two ensures lasting legend permanence.

Ribbons listed are black on standard 1.0” core (unless noted) and coated side out.

Part Number	Width inch (mm)	Length ft (m)
* TTRR-A2.52ZM	2.52 in (64.00 mm)	242 ft (74 m)
* TTRR-A4.33 ZM	4.33 in (110.0 mm)	242 ft (74 m)
TTRR-A2.36Z	2.36 in (59.90 mm)	984 ft (300 m)
TTRR-A2.36ZJ	2.36 in (59.90 mm)	1,476 ft (450 m)
TTRR-A3.15Z	3.15 in (80.00 mm)	984 ft (300 m)
TTRR-A3.26Z	3.26 in (82.80 mm)	984 ft (300 m)
TTRR-A3.26ZJ	3.26 in (82.80 mm)	1,476 ft (450 m)
TTRR-A3.54Z	3.54 in (89.90 mm)	984 ft (300 m)
TTRR-A3.54ZJ	3.54 in (89.90 mm)	1,476 ft (450 m)
TTRR-A4.33Z	4.33 in (110.00 mm)	984 ft (300 m)
TTRR-A4.33ZJ	4.33 in (110.00 mm)	1,476 ft (450 m)

TTRR-AK1.0Z	1.00 in (25.40 mm)	984 ft (300 m)
TTRR-AK1.57Z	1.57 in (39.90 mm)	984 ft (300 m)
TTRR-AK2.0Z	2.00 in (50.80 mm)	1,181 ft (360 m)
TTRR-AK2.36Z	2.36 in (59.90 mm)	984 ft (300 m)
TTRR-AK3.0Z	3.00 in (76.20 mm)	1,181 ft (360 m)
TTRR-AK3.15Z	3.15 in (80.00 mm)	984 ft (300 m)
TTRR-AK3.54Z	3.54 in (89.90 mm)	984 ft (300 m)
TTRR-AK4.33Z	4.33 in (110.00 mm)	984 ft (300 m)

* TTRR-B2.52ZM	2.52 in (64.00 mm)	242 ft (74 m)
* TTRR-B4.33ZM	4.33 in (110.0 mm)	242 ft (74 m)
TTRR-B1.0Z	1.00 in (25.40 mm)	984 ft (300 m)
TTRR-B1.0ZJ	1.00 in (25.40 mm)	1,476 ft (450 m)
TTRR-B1.57Z	1.57 in (39.90 mm)	984 ft (300 m)
TTRR-B1.57ZJ	1.57 in (39.90 mm)	1,476 ft (450 m)
TTRR-B2.36ZJ	2.36 in (59.90 mm)	1,476 ft (450 m)
TTRR-B2.52ZJ	2.52 in (64.00 mm)	1,476 ft (450 m)
TTRR-B3.15ZJ	3.15 in (80.00 mm)	1,476 ft (450 m)
TTRR-B3.27ZJ	3.27 in (83.00 mm)	1,476 ft (450 m)
TTRR-B3.54ZJ	3.54 in (89.90 mm)	1,476 ft (450 m)
TTRR-B4.33Z	4.33 in (110.00 mm)	984 ft (300 m)
TTRR-B4.33ZJ	4.33 in (110.00 mm)	1,476 ft (450 m)

Contact IDENTCO® for other colors. * Indicates 0.50” core size.

Part Number	Width inch (mm)	Length ft (m)
TTRR-CR1.0Z	1.00 in (25.40 mm)	984 ft (300 m)
TTRR-CR1.0ZJ	1.00 in (25.40 mm)	1,476 ft (450 m)
TTRR-CR1.57Z	1.57 in (39.90 mm)	984 ft (300 m)
TTRR-CR1.57ZJ	1.57 in (59.90 mm)	1,476 ft (450 m)
TTRR-CR2.36Z	2.36 in (59.94 mm)	984 ft (300 m)
TTRR-CR3.27Z	3.27 in (83.10 mm)	984 ft (300 m)
TTRR-CR3.54Z	3.54 in (89.90 mm)	984 ft (300 m)
TTRR-CR4.33Z	4.33 in (110.00 mm)	984 ft (300 m)

* TTRR-D3.27ZM	3.27 in (83.00 mm)	242 ft (74 m)
* TTRR-D4.33ZM	4.33 in (110.00 mm)	242 ft (74 m)
TTRR-D1.0Z	1.00 in (25.40 mm)	984 ft (300 m)
TTRR-D1.0ZJ	1.00 in (25.40 mm)	1,476 ft (450 m)
TTRR-D1.57Z	1.57 in (39.90 mm)	984 ft (300 m)
TTRR-D1.57ZJ	1.57 in (39.90 mm)	1,476 ft (450 m)
TTRR-D2.36Z	2.36 in (59.90 mm)	984 ft (300 m)
TTRR-D2.36ZJ	2.36 in (59.90 mm)	1,476 ft (450 m)
TTRR-D3.27Z	3.27 in (83.10 mm)	984 ft (300 m)
TTRR-D3.27ZJ	3.27 in (83.10 mm)	1,476 ft (450 m)
TTRR-D3.54Z	3.54 in (89.90 mm)	984 ft (300 m)
TTRR-D3.54ZJ	3.54 in (89.90 mm)	1,476 ft (450 m)
TTRR-D4.33WHTZ	4.33 in (110.00 mm)	984 ft (300 m)
TTRR-D4.33Z	4.33 in (110.00 mm)	984 ft (300 m)
TTRR-D4.33ZJ	4.33 in (110.00 mm)	1,476 ft (450 m)
TTRR-D5.12Z	5.12 in (130.00 mm)	984 ft (300 m)
TTRR-D5.12ZJ	5.12 in (130.00 mm)	1,476 ft (450 m)

* TTRR-V2.56ZM	2.52 in (64.00 mm)	242 ft (74 m)
* TTRR-V4.33ZM	4.33 in (110.00 mm)	242 ft (74 m)
TTRR-V1.57Z	1.57 in (39.90 mm)	984 ft (300 m)
TTRR-V1.57ZJ	1.57 in (39.90 mm)	1,476 ft (450 m)
TTRR-V2.36Z	2.36 in (59.90 mm)	984 ft (300 m)
TTRR-V2.36ZJ	2.36 in (59.90 mm)	1,476 ft (450 m)
TTRR-V3.27ZJ	3.27 in (83.10 mm)	1,476 ft (450 m)
TTRR-V3.54Z	3.54 in (89.90 mm)	984 ft (300 m)
TTRR-V4.33Z	4.33 in (110.00 mm)	984 ft (300 m)

* Indicates 0.50” core size.

Printing on paper labels? See page 43 for our TTR™ Series wax ribbons.

FULL RANGE OF RUGGED PRINTERS FOR INDUSTRIAL APPLICATIONS

Complete your high-performance labeling system with best-in-class thermal transfer printers from IDENTCO®. From the small form-factor ELP™-D desktop printer to full-size industrial printers like the ELP™-M, ELP™-I, and ELP™-Flex, you can be confident in selecting a printer perfectly suited to your application and environment.



NEW

ELP™-D

- Cable and wire marking labels
- Packaging and shipping labels
- Heat shrink sleeves and tubing

ELP™-M

- Rating plates and nameplates
- PCB and component marking
- Small 2D barcodes for SMT labels

ELP™-I

- Micro miniature labels
- PCB and component marking
- Small 2D barcodes for SMT labels

ELP™-Flex

- Rating plates and nameplates
- Industrial product labeling
- PCB and component marking

Part number	ELP-D	ELP-M-600C	ELP-I-300C	ELP-I-600C	ELP-FLEX-300	ELP-FLEX-600
Printhead resolution	300 dpi	600 dpi	300 dpi	600 dpi	300 dpi	600 dpi
Print width	4.170 in. (105.9 mm)	4.160 in. (105.7 mm)	4.160 in. (105.7 mm)	4.09 in. (104 mm)		
Media alignment	Center	Center	Center	Left		
Label width (min - max)	0.78 in. - 4.40 in. (20 mm-112 mm)	0.197 in. - 4.57 in. (5 mm-116mm)	0.118 in. - 4.133 in. (3 mm-110 mm)	1.00 - 4.57 in. (25.4 mm-116 mm)		
Label height (min - max)	0.39 - 40.0 in. (10 mm-1016 mm)	0.197 - 39.00 in. (5 mm-990 mm)	0.118 in. - 39.0 in. (3 mm-990.6 mm)	0.25 - 39.0 in. (6.35 mm -990.6 mm)		
Label roll size	5.0 in. outside diameter (127 mm)	8.0 in. outside diameter (205 mm)	8.0 in. outside diameter (205 mm)	8.0 in. outside diameter (205 mm)		
Ribbon core size	1.0 in. (25.4 mm) Coated side out	1.0 in. (25.4 mm) Coated side in or out	1.0 in. (25.4 mm) Coated side in or out	1.0 in. (25.4 mm) Coated side in or out		
Zebra emulation	Yes No setup required	Yes Setup required	Yes Setup required	Yes No setup required		
Interface	USB 2.0, Ethernet	USB 2.0, Ethernet	USB 2.0, Ethernet	USB 2.0, Ethernet		
Warranty *	2 years parts and labor	2 years parts and labor	2 years parts and labor	2 years parts and labor		

* Extended warranty available

NICELABEL® SOFTWARE

Design and print your own labels with NiceLabel Designer Pro. NiceLabel delivers a familiar, Microsoft Word-like user experience to enable you to quickly design professional labels without requiring label design expertise or advanced computer skills. Use pre-designed label templates or create your own in minutes.

NiceLabel Designer Pro supports over 70 types of barcodes to meet industry standards and to ensure full compliance no matter which linear or 2D code you use.

Part Number	Description
Designer Pro 1 User	1 user, unlimited number of printers
Designer Pro 3 Printers	3 printers, unlimited number of users



LABELS FOR SMT FEEDERS

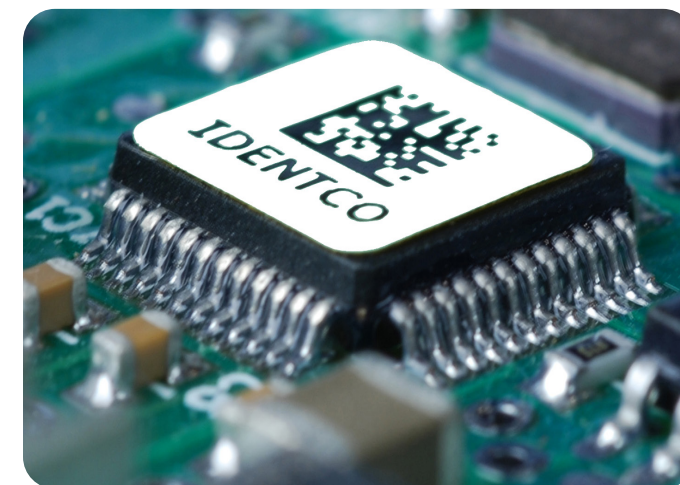
INCREASE THROUGHPUT AND IMPROVE YIELD WITH PPL™ SERIES PICK AND PLACE LABELS

PPL™ Series labels are engineered for use in SMT pick and place label feeders for precise placement on printed circuit boards and components. All PPL Series labels are made of pressure-sensitive polyimide film and engineered with heat and solvent-resistant print receptive topcoats. When printed with IDENTCO® TTRR™ Series thermal transfer ribbons, the result is permanent, fully legible identification throughout your entire process workflow.

PPL Series labels are provided standard on proprietary REEL-e® static dissipative reels. Compatible with all major SMT label feeders and auto-apply equipment, REEL-e reels protect the labels during handling and while mounted in the SMT feeder magazine.

FEATURES AND BENEFITS

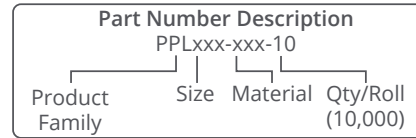
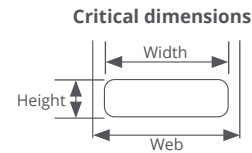
- Polyimide labels and printed data endure high temperatures and aggressive cleaning chemistries found in solder reflow, cleaning and testing operations.
- Labels are compatible with all major pick and place equipment, including IDENTCO's ILP™ Series label feeders.
- Blank labels are available in 12 stock sizes for in-house on-demand thermal transfer printing.
- Custom sizes are available. Contact us for a quote.
- Pre-printed, 100% verified labels are available from our worldwide Print Service Centers.
- Labels are provided on robust REEL-e static dissipative reels.
- Quick-release film liners eliminate dust and ensure smooth compatibility with automation equipment.
- Performance-matched ribbons ensure highest performance.
- ESD materials meet ANSI/ESD S20.20 requirements.
- UL approved when used with the appropriate IDENTCO TTRR™ ribbon specified by Underwriter's Laboratory and the Canadian Standards Association.



REEL-e® Static Dissipative Reels

The REEL-e was developed specifically for the SMT environment. Constructed of rigid, static-dissipative, RoHS-compliant plastic, the REEL-e simplifies media handling and ensures precise delivery of labels and solder masks to the label feeder. All PPL labels are supplied on recyclable REEL-e reels.





For engineered drawings:



Actual size W x H	Part number	Material	Description	Web width inch (mm)	Recommended Ribbon *	Label feeder compatibility
PPL103 0.118" x 0.118" (3.0 mm x 3.0 mm)	PPL103-403FL-10	TT403FL	2 mil General purpose gloss	0.375 (9.53)	TTRR-D1.0ZJ	ILP-30 only
	PPL103-416FL-10	TT416FL	2 mil Economy gloss	0.375 (9.53)	TTRR-D1.0ZJ	ILP-30 only
	PPL103-433FL-10	TT433FL	2 mil Hi-performance gloss	0.375 (9.53)	TTRR-CR1.0ZJ	ILP-30 only
	PPL103-451FL-10	TT451FL	2 mil ESD gloss	0.375 (9.53)	TTRR-D1.0ZJ	ILP-30 only
	PPL103-481FL-10	TT481FL	1 mil Low-profile gloss	0.375 (9.53)	TTRR-CR1.0ZJ	ILP-30 only
PPL104 0.157" x 0.157" (4.0 mm x 4.0 mm)	PPL104-403FL-10	TT403FL	2 mil General purpose gloss	0.450 (11.4)	TTRR-D1.0ZJ	ILP-30 / ILP-45
	PPL104-416FL-10	TT416FL	2 mil Economy gloss	0.450 (11.4)	TTRR-D1.0ZJ	ILP-30 / ILP-45
	PPL104-433FL-10	TT433FL	2 mil Hi-performance gloss	0.450 (11.4)	TTRR-CR1.0ZJ	ILP-30 / ILP-45
	PPL104-451FL-10	TT451FL	2 mil ESD gloss	0.450 (11.4)	TTRR-D1.0ZJ	ILP-30 / ILP-45
PPL105 0.197" x 0.197" (5.0 mm x 5.0 mm)	PPL105-403FL-10	TT403FL	2 mil General purpose gloss	0.450 (11.4)	TTRR-D1.0ZJ	ILP-30 / ILP-45
	PPL105-416FL-10	TT416FL	2 mil Economy gloss	0.450 (11.4)	TTRR-D1.0ZJ	ILP-30 / ILP-45
	PPL105-433FL-10	TT433FL	2 mil Hi-performance gloss	0.450 (11.4)	TTRR-CR1.0ZJ	ILP-30 / ILP-45
	PPL105-451FL-10	TT451FL	2 mil ESD gloss	0.450 (11.4)	TTRR-D1.0ZJ	ILP-30 / ILP-45
PPL106 0.25" x 0.25" (6.35 mm x 6.35 mm)	PPL106-403FL-10	TT403FL	2 mil General purpose gloss	0.450 (11.4)	TTRR-D1.0ZJ	ILP-30 / ILP-45
	PPL106-416FL-10	TT416FL	2 mil Economy gloss	0.450 (11.4)	TTRR-D1.0ZJ	ILP-30 / ILP-45
	PPL106-433FL-10	TT433FL	2 mil Hi-performance gloss	0.450 (11.4)	TTRR-CR1.0ZJ	ILP-30 / ILP-45
	PPL106-451FL-10	TT451FL	2 mil ESD gloss	0.450 (11.4)	TTRR-D1.0ZJ	ILP-30 / ILP-45
PPL107 0.275" x 0.275" (7.0 mm x 7.0 mm)	PPL107-403FL-10	TT403FL	2 mil General purpose gloss	0.450 (11.4)	TTRR-D1.0ZJ	ILP-30 / ILP-45
	PPL107-416FL-10	TT416FL	2 mil Economy gloss	0.450 (11.4)	TTRR-D1.0ZJ	ILP-30 / ILP-45
	PPL107-433FL-10	TT433FL	2 mil Hi-performance gloss	0.450 (11.4)	TTRR-CR1.0ZJ	ILP-30 / ILP-45
	PPL107-451FL-10	TT451FL	2 mil ESD gloss	0.450 (11.4)	TTRR-D1.0ZJ	ILP-30 / ILP-45
PPL108 0.315" x 0.315" (8.0 mm x 8.0 mm)	PPL108-403FL-10	TT403FL	2 mil General purpose gloss	0.450 (11.4)	TTRR-D1.0ZJ	ILP-30 / ILP-45
	PPL108-416FL-10	TT416FL	2 mil Economy gloss	0.450 (11.4)	TTRR-D1.0ZJ	ILP-30 / ILP-45
	PPL108-433FL-10	TT433FL	2 mil Hi-performance gloss	0.450 (11.4)	TTRR-CR1.0ZJ	ILP-30 / ILP-45
	PPL108-451FL-10	TT451FL	2 mil ESD gloss	0.450 (11.4)	TTRR-D1.0ZJ	ILP-30 / ILP-45

Need a custom size?
Contact us for a quote.



* Best ribbon for most applications. Jumbo size rolls listed. See page 28 for standard length ribbons. See page 20 for ribbon formulation descriptions.

Actual size W x H	Part number	Material	Description	Web width inch (mm)	Recommended Ribbon *	Label feeder compatibility
PPL109 0.375" x 0.375" (9.53 mm x 9.53 mm)	PPL109-403FL-10	TT403FL	2 mil General purpose gloss	0.500 (12.7)	TTRR-D1.0ZJ	ILP-30 / ILP-45
	PPL109-416FL-10	TT416FL	2 mil Economy gloss	0.500 (12.7)	TTRR-D1.0ZJ	ILP-30 / ILP-45
	PPL109-433FL-10	TT433FL	2 mil Hi-performance gloss	0.500 (12.7)	TTRR-CR1.0ZJ	ILP-30 / ILP-45
	PPL109-451FL-10	TT451FL	2 mil ESD gloss	0.500 (12.7)	TTRR-D1.0ZJ	ILP-30 / ILP-45
	PPL109-481FL-10	TT481FL	1 mil Low-profile gloss	0.500 (12.7)	TTRR-CR1.0ZJ	ILP-30 / ILP-45
PPL110 0.65" x 0.20" (16.51 mm x 5.08 mm)	PPL110-403FL-10	TT403FL	2 mil General purpose gloss	0.850 (21.59)	TTRR-D1.0ZJ	ILP-45 only
	PPL110-416FL-10	TT416FL	2 mil Economy gloss	0.850 (21.59)	TTRR-D1.0ZJ	ILP-45 only
	PPL110-433FL-10	TT433FL	2 mil Hi-performance gloss	0.850 (21.59)	TTRR-CR1.0ZJ	ILP-45 only
	PPL110-451FL-10	TT451FL	2 mil ESD gloss	0.850 (21.59)	TTRR-D1.0ZJ	ILP-45 only
PPL111 0.60" x 0.25" (15.24 mm x 6.35 mm)	PPL111-403FL-10	TT403FL	2 mil General purpose gloss	0.850 (21.59)	TTRR-D1.0ZJ	ILP-45 only
	PPL111-416FL-10	TT416FL	2 mil Economy gloss	0.850 (21.59)	TTRR-D1.0ZJ	ILP-45 only
	PPL111-433FL-10	TT433FL	2 mil Hi-performance gloss	0.850 (21.59)	TTRR-CR1.0ZJ	ILP-45 only
	PPL111-451FL-10	TT451FL	2 mil ESD gloss	0.850 (21.59)	TTRR-D1.0ZJ	ILP-45 only
PPL112 0.75" x 0.25" (19.05 mm x 6.35 mm)	PPL112-403FL-10	TT403FL	2 mil General purpose gloss	0.875 (22.225)	TTRR-D1.0ZJ	ILP-45 only
	PPL112-416FL-10	TT416FL	2 mil Economy gloss	0.875 (22.225)	TTRR-D1.0ZJ	ILP-45 only
	PPL112-433FL-10	TT433FL	2 mil Hi-performance gloss	0.875 (22.225)	TTRR-CR1.0ZJ	ILP-45 only
	PPL112-451FL-10	TT451FL	2 mil ESD gloss	0.875 (22.225)	TTRR-D1.0ZJ	ILP-45 only
PPL113 0.90" x 0.25" (22.86 mm x 6.35 mm)	PPL113-403FL-10	TT403FL	2 mil General purpose gloss	1.100 (27.940)	TTRR-D1.57ZJ	ILP-45 only
	PPL113-416FL-10	TT416FL	2 mil Economy gloss	1.100 (27.940)	TTRR-D1.57ZJ	ILP-45 only
	PPL113-433FL-10	TT433FL	2 mil Hi-performance gloss	1.100 (27.940)	TTRR-CR1.57ZJ	ILP-45 only
	PPL113-451FL-10	TT451FL	2 mil ESD gloss	1.100 (27.940)	TTRR-D1.57ZJ	ILP-45 only
PPL114 1.00" x 0.25" (25.40 mm x 6.35 mm)	PPL114-403FL-10	TT403FL	2 mil General purpose gloss	1.125 (28.575)	TTRR-D1.57ZJ	ILP-45 only
	PPL114-416FL-10	TT416FL	2 mil Economy gloss	1.125 (28.575)	TTRR-D1.57ZJ	ILP-45 only
	PPL114-433FL-10	TT433FL	2 mil Hi-performance gloss	1.125 (28.575)	TTRR-CR1.57ZJ	ILP-45 only
	PPL114-451FL-10	TT451FL	2 mil ESD gloss	1.125 (28.575)	TTRR-D1.57ZJ	ILP-45 only

* See footnotes on page 24

MATERIAL	COLOR	FINISH	TEMP. RANGE	MATERIAL DESCRIPTION	RIBBONS	UL
TT403FL	White	Gloss	F: -40° to 572° C: -40 to 300°	High performance gloss white 2 mil high temperature-resistant polyimide film with 2 mil permanent acrylic adhesive on clear polyester film liner.	TTRR-D* TTRR-CR TTRR-B	●
TT416FL	White	Gloss	F: -40° to 572° C: -40 to 300°	Standard performance gloss white 2 mil high temperature-resistant polyimide film with 1.5 mil permanent acrylic adhesive on clear polyester film liner.	TTRR-D* TTRR-B TTRR-CR	●
TT433FL	White	Gloss	F: -40° to 572° C: -40 to 300°	Ultra performance gloss white 2 mil high temperature-resistant polyimide film with 2 mil permanent acrylic adhesive on clear polyester film liner.	TTRR-CR* TTRR-B TTRR-D	●
TT451FL	White	Gloss	F: -40° to 572° C: -40 to 300°	Electrostatic dissipative (ESD) gloss white 2 mil high temperature-resistant polyimide film with 2 mil permanent acrylic adhesive on clear polyester film liner.	TTRR-D* TTRR-B TTRR-CR	●
TT481FL	White	Gloss	F: -40° to 572° C: -40 to 300°	Low profile gloss white 1 mil high temperature-resistant polyimide film with 1 mil permanent acrylic adhesive on clear polyester film liner.	TTRR-CR* TTRR-B	●

* Best ribbon for most applications.

ILP™ SERIES LABEL FEEDERS

HIGH SPEED, AUTOMATED LABEL APPLICATION

IDENTCO® offers a robust range of label feeders/presenters for integration with SMT pick and place machines. Automatically pick and place PPL™ labels like any other SMD component. Each model is designed and manufactured to the highest standards for a seamless, reliable interface with your SMT equipment.

The ILP™-30 is the slimmest label presenter in the industry. At merely 30mm (1.18 in.) wide, the ILP-30 requires only one feeder position in your pick and place machine and can feed labels as small as 3mm x 3mm. Choose the ILP-45 for applications requiring a wider variety in label size from small to large.



FEATURES AND BENEFITS

- Easy setup and operation
- Easy label loading and change-over
- Compatible with most SMT pick and place machines
- Low maintenance costs
- Compact and durable designs
- Waste liner collection compartment
- High-speed presenting of IDENTCO PPL labels (results with other labels may vary)

ILP™ SERIES FEEDER SPECIFICATIONS

Part number	ILP-30	ILP-45
Label width	0.118 - 0.39 in (3 - 10mm)	0.157 - 0.905 in (4 - 23mm)
Label height	0.118 - 0.984 in (3 - 25mm)	0.157 - 0.905 in (4 - 23mm)
Maximum liner width	0.59 in (15mm)	1.18 in (30mm)



ACCURATE LABEL PLACEMENT FOR YOUR SMT LINE

IDENTCO® label presenters are compatible with the industry's most popular SMT pick and place equipment. Compatibility of each ILP™ model may vary by the series or version of specific pick and place machines. Refer to the chart below. Your IDENTCO representative can recommend the correct label feeder for your machines.



ILP™ SERIES LABEL FEEDERS

PICK & PLACE MACHINE COMPATIBILITY

Manufacturer	Model	ILP™-30	ILP™-45
ASM	All models before X-series X series, SX series, E by Siplace	●	●
Kulicke & Soffa	Hybrid, iX, AX and iFlex Power supply part no. LFS-PS required	●	●
FUJI	AIMEX II and NXT III series	●	●
JUKI	Systems with mechanical feeder banks Power supply part no. LFS-PS required	●	●
JUKI	Systems with electrical feeder banks	●	●
JUKI	RS-1 series	●	●
MYCRONIC / MYDATA	For use in older flex cassettes from Mycronic	●	
MYCRONIC / MYDATA	For use in the new Agilis™ flex cassettes from Mycronic	●	

PRINTER FOR PPL™ LABELS



ELP™-I-600C-1R SMT LABEL PRINTER

With its center-alignment feature, precise registration capabilities, and high-resolution 600 dpi printing, the ELP™-I-600C-1R thermal transfer printer is the industry standard for printing small 2D codes and text on miniature PPL™ labels for SMT applications.

The one-inch wide platen roller on the ELP-I-600C-1R prevents excessive printhead and platen wear when used with narrow-web PPL™ Series labels. Stand-alone printing promotes cost savings through ease of use, freeing up valuable work space, and allowing diverse printer placement. No PC needed.

FEATURES AND BENEFITS

- Exceptional print registration
- Handles web widths as narrow as 0.45" (11.43mm)
- Center-aligned printing for ultimate consistency
- Large color LCD touch screen
- Minimal waste during calibration
- Easy loading and removal of media
- User-friendly operation

SPECIFICATIONS

- Can accommodate 450 meter ribbon lengths
- 6" (150mm) per second print speed at 600dpi
- Holds 8" (205mm) OD media rolls
- Standard 1" (25.4mm) core ribbons (CSO/CSI)
- 2 year printer warranty

Part number	ELP-I-600C-1R
Description	Label printer, electronic
Label width	0.118 in. - 1.000 in. (3mm-25.4mm)
Label height	0.118 in. - 39.0 in (3mm-990.6mm)
Label roll size	8.0 in. (205mm) outside diameter
Warranty *	2 years parts and labor

* Extended warranty available

THERMAL TRANSFER RIBBONS



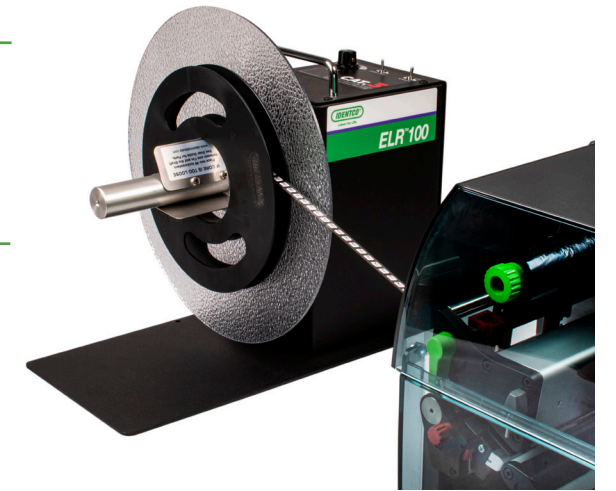
TTRR™ RESIN RIBBONS

Achieve ultimate performance and legend permanence by printing PPL™ labels with IDENTCO® thermal transfer resin ribbons. Refer to the charts on pages 24-25 to find the recommended ribbon formulation and width for your chosen label. All TTRR™ ribbons and PPL label materials have been tested by KYZEN, ZESTRON, and kolb for their specific chemistries. PPL/TTRR label and ribbon combinations have also passed UL testing and are required to be used together for UL recognition.

Part Number	Width	Length	Performance Level
TTRR-B1.0Z	1.0" (25.4mm)	984' (300m)	Standard
TTRR-B1.0ZJ	1.0" (25.4mm)	1476' (450m)	Standard
TTRR-B1.57Z	1.57" (39.87mm)	984' (300m)	Standard
TTRR-B1.57ZJ	1.57" (39.87mm)	1476' (450m)	Standard
TTRR-D1.0Z	1.0" (25.4mm)	984' (300m)	High performance
TTRR-D1.0ZJ	1.0" (25.4mm)	1476' (450m)	High performance
TTRR-D1.57Z	1.57" (39.87mm)	984' (300m)	High performance
TTRR-D1.57ZJ	1.57" (39.87mm)	1476' (450m)	High performance
TTRR-CR1.0Z	1.0" (25.4mm)	984' (300m)	Extreme performance
TTRR-CR1.0ZJ	1.0" (25.4mm)	1476' (450m)	Extreme performance
TTRR-CR1.57Z	1.57" (39.87mm)	984' (300m)	Extreme performance
TTRR-CR1.57ZJ	1.57" (39.87mm)	1476' (450m)	Extreme performance

Ribbons in above chart are wound coated side out.

LABEL REWINDER



ELR™-100 ELECTRONIC LABEL REWINDER

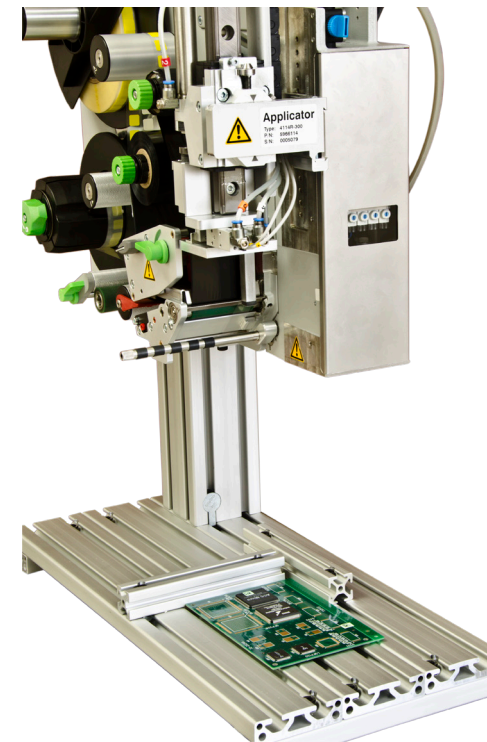
Free up hands and simplify post-print rewinding with the ELR™-100 rewinder. The Constant Adjustable Torque™ technology provides smooth, silent operation that produces a professionally wound roll of labels ready for mounting on label feeders and auto-apply equipment.

FEATURES AND BENEFITS

- Full size, heavy-duty label rewinder
- 6" wide fin-style core holder with two label flanges
- Label widths up to 6" (152mm)

Part number	ELR-100
Description	Label rewinder, electronic
Label roll size	12.0 in. (305mm) outside diameter
Core diameter	3.0 in. (76mm)
Base footprint	7.0 in. x 15.0 in. (177.8mm x 381mm)
Max. roll weight	20 lbs (9.1Kg)
Overall size	H14" x W12" x D17" (356mm x 303mm x 432mm)

PRINTER APPLICATOR



ELP™-A PRINTER/APPLICATOR

Increase speed and throughput of manual circuit board labeling with the ELP™ print and apply machine. The ELP-A unit is ideal for those situations where the label absolutely must be applied to the bare board before any other component or operation. This printer/applicator is a cost effective solution that ensures consistency of adhesion and placement accuracy. The built-in printer and tamper nozzle are designed to accommodate a broad range of label sizes and shapes.

FEATURES AND BENEFITS

- Precise application tolerances of +/- .2mm (.007")
- Accommodates labels as small as 4mm x 4mm
- Large graphic display
- Application from bottom to top, top to bottom, or either side
- Easily integrates into production lines or work cells
- Solid die-cast aluminum chassis
- Ball-bearing transport rollers for highly accurate label feeding
- Easy-to-change printhead
- Host connection or stand-alone operation

Part number	ELPA-2000
Description	Label applicator, automatic
Label width	0.157 - 2.283 in (4-58mm)
Label height	0.157 - 7.874 in (4-200mm)
Label roll size	8.0 in (204mm) outside diameter

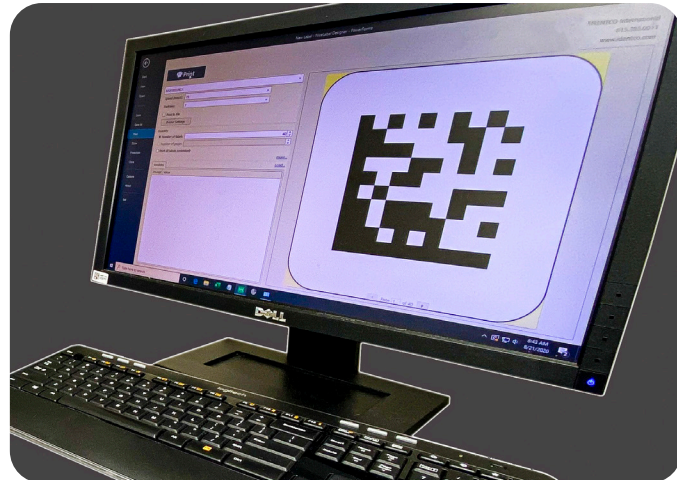
LET US PRINT FOR YOU!



Barcodes and variable text. Pre-printed and 100% verified. IDENTCO® Print Service Centers offer a cost-effective alternative to your own in-house printing.

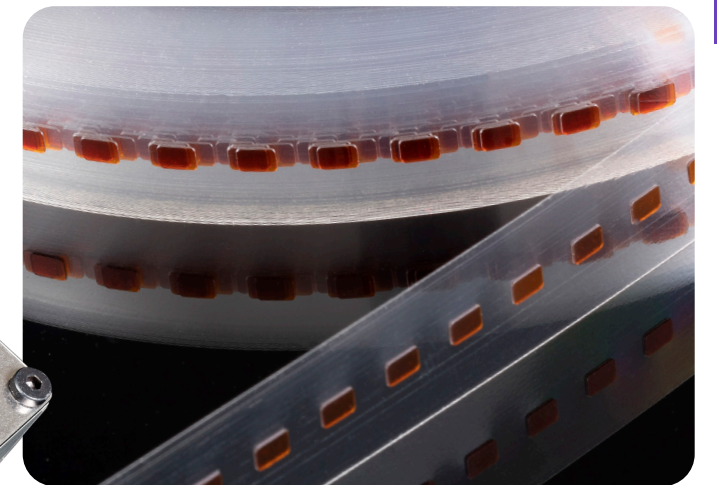
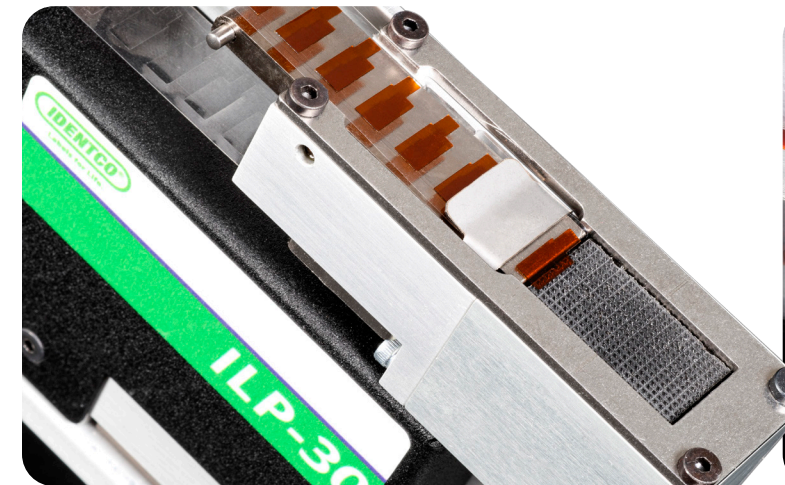
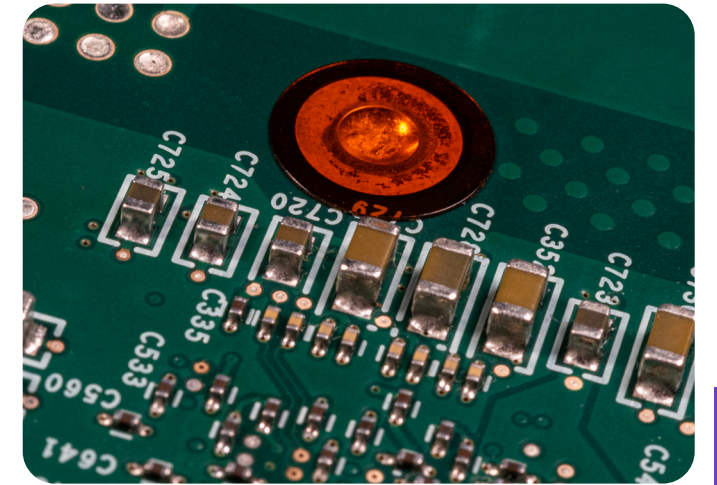
Variable linear and 2D barcodes are 100% verified for readability before we ship to you. Located in the US, Europe, and Mexico, our IDENTCO Print Service Centers help you avoid downtime from printer problems or lack of media.

PRINT SERVICE CENTER LOCATIONS



PICK AND PLACE DIE-CUT POLYIMIDE MASKS

IDENTCO® solder masks are designed for use in ILP™ SMT pick and place feeders and other auto-apply equipment. Made of removable PT205HD 5 mil polyimide material, IDENTCO masks withstand direct contact with the fluxes, molten solder, and cleaning chemicals used in the printed circuit board manufacturing process. Withstanding temperatures up to 500° F (260° C), IDENTCO masks are designed to remove cleanly, leaving no adhesive residue. Masks are supplied on 2 mil polyester liner and IDENTCO's proprietary REEL-e® dispenser reels for ultimate feeder and auto-apply equipment performance.



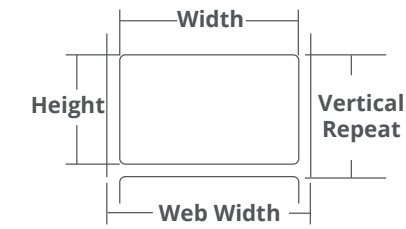
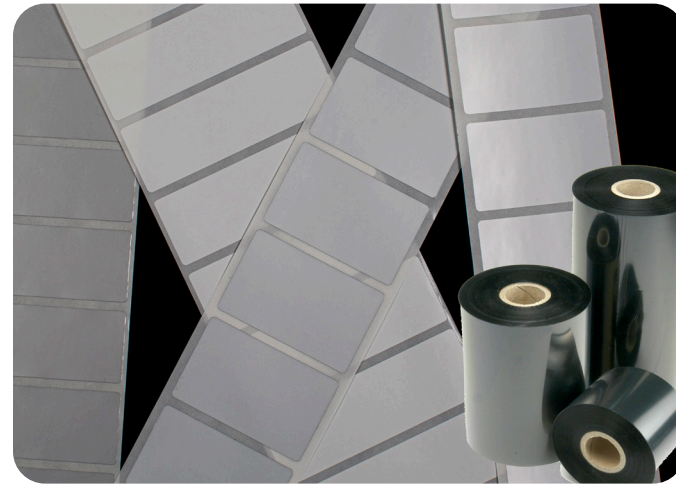
* Custom sizes available *

Part number	Material	Shape	Width inch (mm)	Height inch (mm)	Web width inch (mm)	Quantity per roll	Label feeder compatibility
DCP1205-AS250	PT205HD	Square	0.25 (6.35)	0.25 (6.35)	0.45 (11.43)	5000	ILP-30 / ILP-45
DCP1205-AS375	PT205HD	Square	0.375 (9.525)	0.375 (9.525)	0.50 (12.70)	5000	ILP-30 / ILP-45
DCP1205-AS500	PT205HD	Square	0.50 (12.70)	0.50 (12.70)	0.625 (15.875)	2500	ILP-45 only
DCP1205-AS625	PT205HD	Square	0.625 (15.875)	0.625 (15.875)	0.75 (19.05)	2500	ILP-45 only
DCP1205-AS750	PT205HD	Square	0.75 (19.05)	0.75 (19.05)	0.875 (22.225)	2500	ILP-45 only
DCP1205-AR250	PT205HD	Circle	0.25 (6.35)	0.25 (6.35)	0.45 (11.43)	5000	ILP-30 / ILP-45
DCP1205-AR375	PT205HD	Circle	0.375 (9.525)	0.375 (9.525)	0.50 (12.70)	5000	ILP-30 / ILP-45
DCP1205-AR500	PT205HD	Circle	0.50 (12.70)	0.50 (12.70)	0.625 (15.875)	2500	ILP-45 only
DCP1205-AR625	PT205HD	Circle	0.625 (15.875)	0.625 (15.875)	0.75 (19.05)	2500	ILP-45 only
DCP1205-AR750	PT205HD	Circle	0.75 (19.05)	0.75 (19.05)	0.875 (22.225)	2500	ILP-45 only

UL/CSA NAMEPLATE / RATING PLATES

TTL® 300 Series labels are cost-effective UL/CSA recognized large-format labels for printing nameplates, rating plates, and instructional labels on demand. Stock materials used in the TTL300 Series are intended for use on smooth surfaces. Contact an IDENTCO® representative for recommendations on alternative materials for powder coated surfaces.

To achieve optimal print quality and UL/CSA recognition, print TTL300 Series labels with the recommended TTRR™ series ribbon.



TTL300	in. (mm)	Part Number	Material	Ribbon
Width:	1.250 (31.75)	TTL300-700-12	Gloss white polyester	TTRR-B3.27ZJ
Height:	1.000 (25.40)	TTL300-748-12	Matte white polyester	TTRR-D3.27ZJ
Vert. repeat:	1.125 (28.58)	TTL300-730-12	Gloss silver polyester	TTRR-B3.27ZJ
Web width:	2.750 (69.85)	TTL300-741-12	Matte silver polyester	TTRR-B3.27ZJ
Labels per row: 2		TTL300-600-12	Gloss polypropylene	TTRR-B3.27ZJ
		TTL300-602-12	Matte polypropylene	TTRR-A3.26ZJ

TTL301	in. (mm)	Part Number	Material	Ribbon
Width:	1.500 (38.10)	TTL301-700-6	Gloss white polyester	TTRR-B2.36ZJ
Height:	1.000 (25.40)	TTL301-748-6	Matte white polyester	TTRR-D2.36ZJ
Vert. repeat:	1.125 (28.41)	TTL301-730-6	Gloss silver polyester	TTRR-B2.36ZJ
Web width:	1.700 (43.18)	TTL301-741-6	Matte silver polyester	TTRR-B2.36ZJ
Labels per row: 1		TTL301-600-6	Gloss polypropylene	TTRR-B2.36ZJ
		TTL301-602-6	Matte polypropylene	TTRR-A2.36ZJ

TTL302	in. (mm)	Part Number	Material	Ribbon
Width:	2.000 (50.80)	TTL302-700-6	Gloss white polyester	TTRR-B2.36ZJ
Height:	1.000 (25.40)	TTL302-748-6	Matte white polyester	TTRR-D2.36ZJ
Vert. repeat:	1.125 (28.58)	TTL302-730-6	Gloss silver polyester	TTRR-B2.36ZJ
Web width:	2.125 (54.04)	TTL302-741-6	Matte silver polyester	TTRR-B2.36ZJ
Labels per row: 1		TTL302-600-6	Gloss polypropylene	TTRR-B2.36ZJ
		TTL302-602-6	Matte polypropylene	TTRR-A2.36ZJ

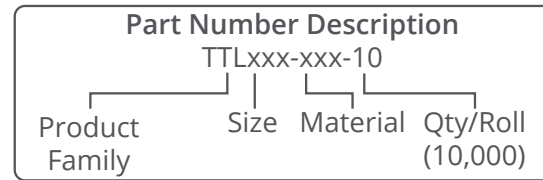
TTL303	in. (mm)	Part Number	Material	Ribbon
Width:	4.000 (101.60)	TTL303-700-3	Gloss white polyester	TTRR-B4.33ZJ
Height:	1.000 (25.40)	TTL303-748-3	Matte white polyester	TTRR-D4.33ZJ
Vert. repeat:	1.125 (28.57)	TTL303-730-3	Gloss silver polyester	TTRR-B4.33ZJ
Web width:	4.200 (106.68)	TTL303-741-3	Matte silver polyester	TTRR-B4.33ZJ
Labels per row: 1		TTL303-600-3	Gloss polypropylene	TTRR-B4.33ZJ
		TTL303-602-3	Matte polypropylene	TTRR-A4.33ZJ

TTL304	in. (mm)	Part Number	Material	Ribbon
Width:	2.750 (69.85)	TTL304-700-4	Gloss white polyester	TTRR-B3.27ZJ
Height:	1.375 (34.93)	TTL304-748-4	Matte white polyester	TTRR-D3.27ZJ
Vert. repeat:	1.500 (38.10)	TTL304-730-4	Gloss silver polyester	TTRR-B3.27ZJ
Web width:	2.875 (73.03)	TTL304-741-4	Matte silver polyester	TTRR-B3.27ZJ
Labels per row: 1		TTL304-600-4	Gloss polypropylene	TTRR-B3.27ZJ
		TTL304-602-4	Matte polypropylene	TTRR-A3.26ZJ

TTL305	in. (mm)	Part Number	Material	Ribbon
Width:	2.750 (69.85)	TTL305-700-3	Gloss white polyester	TTRR-B3.27ZJ
Height:	1.250 (31.75)	TTL305-748-3	Matte white polyester	TTRR-D3.27ZJ
Vert. repeat:	1.375 (34.93)	TTL305-730-3	Gloss silver polyester	TTRR-B3.27ZJ
Web width:	2.950 (74.93)	TTL305-741-3	Matte silver polyester	TTRR-B3.27ZJ
Labels per row: 1		TTL305-600-3	Gloss polypropylene	TTRR-B3.27ZJ
		TTL305-602-3	Matte polypropylene	TTRR-A3.26ZJ

TTL306	in. (mm)	Part Number	Material	Ribbon
Width:	3.000 (76.20)	TTL306-700-1	Gloss white polyester	TTRR-B3.27ZJ
Height:	3.000 (76.20)	TTL306-748-1	Matte white polyester	TTRR-D3.27ZJ
Vert. repeat:	3.125 (79.37)	TTL306-730-1	Gloss silver polyester	TTRR-B3.27ZJ
Web width:	3.200 (81.28)	TTL306-741-1	Matte silver polyester	TTRR-B3.27ZJ
Labels per row: 1		TTL306-600-1	Gloss polypropylene	TTRR-B3.27ZJ
		TTL306-602-1	Matte polypropylene	TTRR-A3.26ZJ

TTL307	in. (mm)	Part Number	Material	Ribbon
Width:	3.000 (76.20)	TTL307-700-3	Gloss white polyester	TTRR-B3.27ZJ
Height:	2.000 (50.80)	TTL307-748-3	Matte white polyester	TTRR-D3.27ZJ
Vert. repeat:	2.125 (53.98)	TTL307-730-3	Gloss silver polyester	TTRR-B3.27ZJ
Web width:	3.125 (79.38)	TTL307-741-3	Matte silver polyester	TTRR-B3.27ZJ
Labels per row: 1		TTL307-600-3	Gloss polypropylene	TTRR-B3.27ZJ
		TTL307-602-3	Matte polypropylene	TTRR-A3.26ZJ



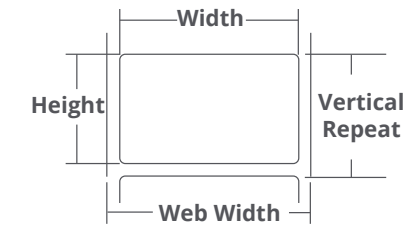
TTL308	in. (mm)	Part Number	Material	Ribbon
Width:	1.500 (38.10)	TTL308-700-10	Gloss white polyester	TTRR-B3.54ZJ
Height:	0.750 (19.05)	TTL308-748-10	Matte white polyester	TTRR-D3.54ZJ
Vert. repeat:	0.875 (22.23)	TTL308-730-10	Gloss silver polyester	TTRR-B3.54ZJ
Web width:	3.300 (83.82)	TTL308-741-10	Matte silver polyester	TTRR-B3.54ZJ
Labels per row: 2		TTL308-600-10	Gloss polypropylene	TTRR-B3.54ZJ
		TTL308-602-10	Matte polypropylene	TTRR-A3.54ZJ

TTL309	in. (mm)	Part Number	Material	Ribbon
Width:	3.000 (76.20)	TTL309-700-5	Gloss white polyester	TTRR-B3.27ZJ
Height:	1.000 (25.40)	TTL309-748-5	Matte white polyester	TTRR-D3.27ZJ
Vert. repeat:	1.125 (28.56)	TTL309-730-5	Gloss silver polyester	TTRR-B3.27ZJ
Web width:	3.125 (79.38)	TTL309-741-5	Matte silver polyester	TTRR-B3.27ZJ
Labels per row: 1		TTL309-600-5	Gloss polypropylene	TTRR-B3.27ZJ
		TTL309-602-5	Matte polypropylene	TTRR-A3.26ZJ

TTL310	in. (mm)	Part Number	Material	Ribbon
Width:	2.750 (69.85)	TTL310-700-5	Gloss white polyester	TTRR-B3.27ZJ
Height:	1.000 (25.40)	TTL310-748-5	Matte white polyester	TTRR-D3.27ZJ
Vert. repeat:	1.125 (28.58)	TTL310-730-5	Gloss silver polyester	TTRR-B3.27ZJ
Web width:	3.000 (76.20)	TTL310-741-5	Matte silver polyester	TTRR-B3.27ZJ
Labels per row: 1		TTL310-600-5	Gloss polypropylene	TTRR-B3.27ZJ
		TTL310-602-5	Matte polypropylene	TTRR-A3.26ZJ

TTL311	in. (mm)	Part Number	Material	Ribbon
Width:	2.000 (50.80)	TTL311-700-2.5	Gloss white polyester	TTRR-B3.27ZJ
Height:	1.250 (31.75)	TTL311-748-2.5	Matte white polyester	TTRR-D3.27ZJ
Vert. repeat:	1.375 (34.93)	TTL311-730-2.5	Gloss silver polyester	TTRR-B3.27ZJ
Web width:	2.250 (56.89)	TTL311-741-2.5	Matte silver polyester	TTRR-B3.27ZJ
Labels per row: 1		TTL311-600-2.5	Gloss polypropylene	TTRR-B3.27ZJ
		TTL311-602-2.5	Matte polypropylene	TTRR-A3.26ZJ

TTL312	in. (mm)	Part Number	Material	Ribbon
Width:	3.000 (76.20)	TTL312-700-2.5	Gloss white polyester	TTRR-B3.54ZJ
Height:	1.500 (38.10)	TTL312-748-2.5	Matte white polyester	TTRR-D3.54ZJ
Vert. repeat:	1.625 (41.28)	TTL312-730-2.5	Gloss silver polyester	TTRR-B3.54ZJ
Web width:	3.240 (82.28)	TTL312-741-2.5	Matte silver polyester	TTRR-B3.54ZJ
Labels per row: 1		TTL312-600-2.5	Gloss polypropylene	TTRR-B3.54ZJ
		TTL312-602-2.5	Matte polypropylene	TTRR-A3.54ZJ



TTL313	in. (mm)	Part Number	Material	Ribbon
Width:	4.000 (101.60)	TTL313-700-1	Gloss white polyester	TTRR-B4.33ZJ
Height:	2.000 (50.80)	TTL313-748-1	Matte white polyester	TTRR-D4.33ZJ
Vert. repeat:	2.125 (53.97)	TTL313-730-1	Gloss silver polyester	TTRR-B4.33ZJ
Web width:	4.200 (106.68)	TTL313-741-1	Matte silver polyester	TTRR-B4.33ZJ
Labels per row: 1		TTL313-600-1	Gloss polypropylene	TTRR-B4.33ZJ
		TTL313-602-1	Matte polypropylene	TTRR-A4.33ZJ

TTL314	in. (mm)	Part Number	Material	Ribbon
Width:	4.000 (101.60)	TTL314-700-1	Gloss white polyester	TTRR-B4.33ZJ
Height:	3.000 (76.20)	TTL314-748-1	Matte white polyester	TTRR-D4.33ZJ
Vert. repeat:	3.125 (79.37)	TTL314-730-1	Gloss silver polyester	TTRR-B4.33ZJ
Web width:	4.200 (106.68)	TTL314-741-1	Matte silver polyester	TTRR-B4.33ZJ
Labels per row: 1		TTL314-600-1	Gloss polypropylene	TTRR-B4.33ZJ
		TTL314-602-1	Matte polypropylene	TTRR-A4.33ZJ

TTL315	in. (mm)	Part Number	Material	Ribbon
Width:	4.000 (101.60)	TTL315-700-1	Gloss white polyester	TTRR-B4.33ZJ
Height:	4.000 (101.60)	TTL315-748-1	Matte white polyester	TTRR-D4.33ZJ
Vert. repeat:	4.125 (104.77)	TTL315-730-1	Gloss silver polyester	TTRR-B4.33ZJ
Web width:	4.200 (106.68)	TTL315-741-1	Matte silver polyester	TTRR-B4.33ZJ
Labels per row: 1		TTL315-600-1	Gloss polypropylene	TTRR-B4.33ZJ
		TTL315-602-1	Matte polypropylene	TTRR-A4.33ZJ

TTL316	in. (mm)	Part Number	Material	Ribbon
Width:	4.000 (101.60)	TTL316-700-1	Gloss white polyester	TTRR-B4.33ZJ
Height:	6.000 (152.40)	TTL316-748-1	Matte white polyester	TTRR-D4.33ZJ
Vert. repeat:	6.125 (155.57)	TTL316-730-1	Gloss silver polyester	TTRR-B4.33ZJ
Web width:	4.200 (106.68)	TTL316-741-1	Matte silver polyester	TTRR-B4.33ZJ
Labels per row: 1		TTL316-600-1	Gloss polypropylene	TTRR-B4.33ZJ
		TTL316-602-1	Matte polypropylene	TTRR-A4.33ZJ

TTL317	in. (mm)	Part Number	Material	Ribbon
Width:	2.75 (69.85)	TTL316-700-1	Gloss white polyester	TTRR-B3.27ZJ
Height:	1.75 (44.45)	TTL316-748-1	Matte white polyester	TTRR-D3.27ZJ
Vert. repeat:	1.875 (47.63)	TTL316-730-1	Gloss silver polyester	TTRR-B3.27ZJ
Web width:	2.875 (73.03)	TTL316-741-1	Matte silver polyester	TTRR-B3.27ZJ
Labels per row: 1		TTL316-600-1	Gloss polypropylene	TTRR-B3.27ZJ
		TTL316-602-1	Matte polypropylene	TTRR-A3.26ZJ

WIRE IDENTIFICATION SOLUTIONS FOR HARNESS ASSEMBLY AND CONTROL PANELS

IDENTCO®'s range of wire and cable markers is designed with the wire harness assembler, contract manufacturer, and panel builder in mind. Self-laminating wrap-around labels, printable heat shrink sleeves, and durable printers and ribbons provide the ease-of-use and performance necessary for efficient assembly, installation, and long-lasting identification.

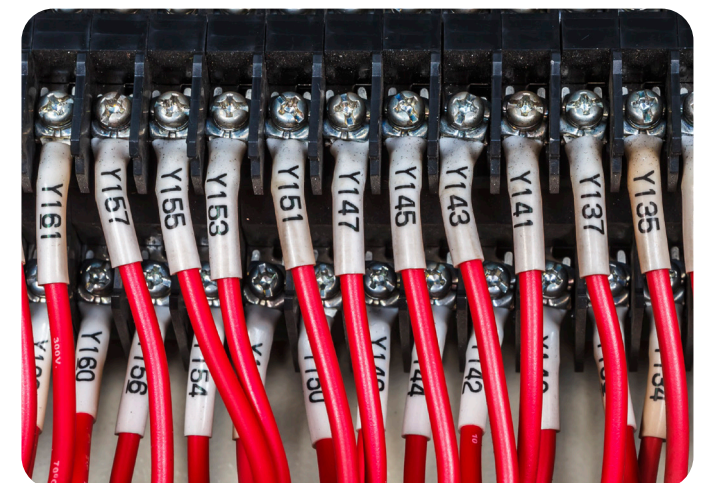
SELF-LAMINATING WIRE AND CABLE MARKERS

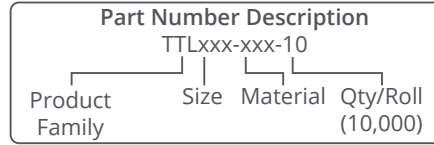
Built-in protection in configurations that enhance your productivity. Self-laminating wire and cable markers from IDENTCO® are designed to provide the ultimate in durability, legibility, and the flexibility to fit your unique assembly processes. The TTL®200 Series markers are high-performance print-on-demand wire and cable markers in configurations that enhance your productivity.

Wrap-around wire and cable markers can be used post-termination and cover AWG sizes 10 through 4/0 and IEC 60228 (mm²) sizes 6 through 625. The highly conformable properties of TT327 vinyl make TTL200 Series self-laminating labels the best choice for identifying flat ribbon cable, from four to 40 conductors wide.

Highlights

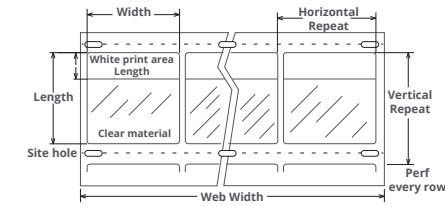
- White print-on area with clear tail wraps around the wire and printed legend to provide a physical barrier between the printed information and the environment.
- With the most opaque white print-on area in the industry, your legend remains clearly legible when marking even on the deepest black insulation.
- Three site holes allow the TTL200 Series markers to be used with any thermal transfer printer on the market, regardless of the location of their various sensors.
- Perforated liner between each row of labels allows for easy kitting and distribution to your individual harness boards or panels.
- Horizontal, one-across configurations offer even more flexibility for kitting and waste reduction.
- Supple, conformable vinyl material and high-performance acrylic adhesive ensure that the markers stay permanently wrapped on the wire.
- UL approved when printed with IDENTCO's TTRR™-A high-performance resin ribbon.





Part Number	Wire Size mm ² AWG	Ribbon Cable # of Conductors	Total Marker Width x Length inch (mm)	White Print-on Area Length inch (mm)	Horiz. Repeat inch (mm)	Vert. Repeat inch (mm)	Web Width inch (mm)	# Across	Recommended Ribbon	
TTL200-327-10	35	1/0	8-10	0.500 x 1.438 (12.70 x 36.52)	0.500 (12.70)	0.662 (16.81)	1.688 (42.86)	3.350 (85.09)	5	TTRR-A3.54Z
TTL201-327-10	35	1/0	8-10	0.800 x 1.438 (20.32 x 36.52)	0.500 (12.70)	0.800 (20.32)	1.688 (42.86)	3.350 (85.09)	4	TTRR-A3.54Z
TTL202-327-5	95	4/0	14-16	1.000 x 2.250 (25.40 x 36.51)	0.750 (19.05)	1.100 (27.94)	2.500 (63.50)	3.40 (86.36)	3	TTRR-A3.54Z
TTL203-327-3.5	240	N/A	18-25	1.000 x 3.750 (25.40 x 95.25)	1.000 (25.40)	1.100 (27.94)	4.000 (101.60)	3.400 (86.36)	3	TTRR-A3.54Z
TTL204-327-1	95	4/0	14-16	2.000 x 2.250 (50.80 x 57.15)	0.750 (19.05)	N/A	2.500 (63.50)	2.150 (54.61)	1	TTRR-A2.36Z
TTL205-327-7.5	35	1/0	8-10	1.000 x 1.500 (25.40 x 38.10)	0.500 (12.70)	1.000 (25.40)	1.750 (44.45)	3.300 (83.82)	3	TTRR-A3.54Z
TTL206-327-1	240	N/A	18-25	2.000 x 3.750 (50.80 x 95.25)	1.000 (25.40)	N/A	4.000 (101.60)	2.200 (55.88)	1	TTRR-A2.36Z
TTL207-327-10	16	4	4-6	0.750 x 0.938 (19.05 x 23.82)	0.375 (9.53)	0.800 (20.32)	1.188 (30.16)	3.350 (85.09)	4	TTRR-A3.54Z
TTL208-327-10	625	N/A	34-40	1.900 x 5.940 (48.26 x 150.88)	0.750 (19.05)	2.000 (50.80)	6.250 (158.75)	4.140 (105.16)	2	TTRR-A4.33Z
TTL209-327-10	16	4	4-6	0.500 x 0.940 (12.70 x 23.88)	0.380 (9.53)	0.600 (15.24)	1.25 (31.75)	3.70 (93.98)	6	TTRR-A4.33Z
TTL210-327-2.5	35	1	8-10	2.000 x 1.438 (50.80 x 36.51)	0.500 (12.70)	2.000 (50.80)	1.688 (42.86)	4.250 (107.95)	2	TTRR-A4.33Z
TTL211-327-3	240	N/A	18-25	1.000 x 3.750 (25.40 x 95.25)	1.000 (25.40)	1.075 (27.31)	4.000 (101.60)	3.350 (85.09)	3	TTRR-A3.54Z
TTL212-327-3	625	N/A	34-40	2.000 x 7.000 (50.80 x 177.80)	1.500 (38.10)	N/A	7.250 (184.15)	2.200 (55.88)	1	TTRR-A2.36Z
TTL213-327-1	625	N/A	34-40	1.900 x 5.940 (48.26 x 150.88)	1.500 (38.10)	2.000 (50.80)	6.250 (158.75)	4.140 (105.16)	2	TTRR-A4.33Z
TTL214-327-1.5	95	4/0	14-16	1.000 x 2.250 (25.40 x 57.15)	0.750 (19.05)	1.000 (25.40)	2.500 (63.50)	4.250 (107.95)	4	TTRR-A4.33Z
TTL215-327-5	10	6	4	0.750 x 0.750 (19.05 x 19.05)	0.250 (6.35)	0.750 (19.05)	1.000 (25.40)	4.000 (101.60)	5	TTRR-A4.33Z
TTL217-327-5	35	1/0	8-10	0.500 x 1.500 (12.70 x 38.10)	0.500 (12.70)	0.500 (12.70)	1.750 (44.45)	4.250 (107.95)	8	TTRR-A4.33Z
TTL218-327-5	10	6	4	0.500 x 0.750 (12.70 x 19.05)	0.375 (9.53)	0.600 (15.24)	1.000 (25.40)	2.500 (63.50)	4	TTRR-A3.15Z
TTL219-327-5	16	3	4-6	0.500 x 1.000 (12.70 x 25.40)	0.375 (9.53)	0.600 (15.24)	1.250 (31.75)	2.500 (63.50)	4	TTRR-A3.15Z
TTL220-327-5	25	2	8	0.500 x 1.250 (12.70 x 31.75)	0.500 (12.70)	0.600 (15.24)	1.500 (38.10)	2.500 (63.50)	4	TTRR-A3.15Z
TTL222-327-10	50	2/0	9-12	0.750 x 1.750 (19.05 x 44.45)	0.500 (12.70)	0.800 (20.32)	2.000 (50.80)	3.350 (85.09)	4	TTRR-A4.33Z
TTL225-327-5	10	6	4	1.000 x 0.750 (25.40 x 19.05)	0.375 (9.53)	1.100 (27.94)	1.000 (25.40)	2.300 (58.42)	2	TTRR-A3.15Z
TTL226-327-5	16	3	4-6	1.000 x 1.000 (25.40 x 25.40)	0.375 (9.53)	1.100 (27.94)	1.250 (31.75)	2.300 (58.42)	2	TTRR-A3.15Z
TTL227-327-5	25	2	8	1.000 x 1.250 (25.40 x 31.75)	0.500 (12.70)	1.100 (27.94)	1.500 (38.10)	2.300 (58.42)	2	TTRR-A3.15Z
TTL229-327-3	95	4/0	14-16	1.000 x 2.250 (25.40 x 57.15)	0.750 (19.05)	1.100 (27.94)	2.500 (63.50)	2.300 (58.42)	2	TTRR-A3.15Z

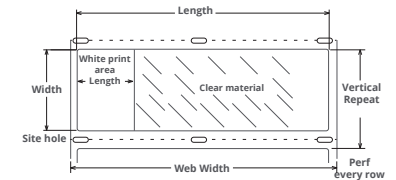
* IEC 60228



Part Number	Wire Size mm ² AWG	Ribbon Cable # of Conductors	Total Marker Width x Length inch (mm)	White Print-on Area Length inch (mm)	Horiz. Repeat inch (mm)	Vert. Repeat inch (mm)	Web Width inch (mm)	# Across	Recommended Ribbon	
TTL232-327-1	625	N/A	34-40	1.000 x 6.000 (25.40 x 152.40)	1.500 (38.10)	1.100 (27.94)	6.250 (158.75)	2.300 (58.42)	2	TTRR-A3.15Z
TTL233-327-5	16	3	4-6	1.500 x 1.000 (38.10 x 25.40)	0.375 (9.53)	N/A	1.250 (31.75)	1.700 (43.18)	1	TTRR-A2.36Z
TTL234-327-2.5	35	1/0	8-10	1.500 x 1.500 (38.10 x 38.10)	0.500 (12.70)	N/A	1.750 (44.45)	1.700 (43.18)	1	TTRR-A2.36Z
TTL235-327-2.5	16	3	4-6	1.750 x 1.000 (44.45 x 25.40)	0.375 (9.53)	N/A	1.250 (31.75)	1.950 (49.53)	1	TTRR-A2.36Z
TTL236-327-2.5	35	1/0	8-10	1.750 x 1.500 (44.45 x 38.10)	0.500 (12.70)	N/A	1.750 (44.45)	1.950 (49.53)	1	TTRR-A2.36Z
TTL238-327-0.5	625	N/A	34-40	2.000 x 6.000 (50.80 x 152.40)	1.500 (38.10)	N/A	6.250 (158.75)	2.200 (55.88)	1	TTRR-A3.15Z
TTL239-327-0.5	625	N/A	34-40	2.00 x 7.00 (50.80 x 177.80)	1.500 (38.10)	N/A	7.250 (184.15)	2.200 (55.88)	1	TTRR-A3.15Z
TTL241-327-1	95	4/0	14-16	2.500 x 2.250 (63.50 x 57.15)	0.750 (19.05)	N/A	2.500 (63.50)	2.700 (68.58)	1	TTRR-A3.15Z

* IEC 60228

New horizontal configurations



Part Number	Wire Size mm ² AWG	Ribbon Cable # of Conductors	Total Marker Width x Length inch (mm)	White Print-on Area Length inch (mm)	Horiz. Repeat inch (mm)	Vert. Repeat inch (mm)	Web Width inch (mm)	# Across	Recommended Ribbon	
TTL216-327-1	300	N/A	20-26	1.000 x 4.000 (25.40 x 101.60)	1.000 (25.40)	N/A	1.250 (31.75)	4.250 (105.16)	1	TTRR-A4.33Z
TTL221-327-5	35	1/0	8-10	0.500 x 1.438 (12.70 x 36.51)	0.500 (12.70)	N/A	0.750 (19.05)	1.638 (41.59)	1	TTRR-A2.36Z
TTL223-327-3.5	50	2/0	9-12	0.750 x 1.750 (19.05 x 44.45)	0.500 (12.70)	N/A	1.000 (25.40)	1.950 (49.53)	1	TTRR-A2.36Z
TTL224-327-3.5	35	1/0	8-10	0.800 x 1.438 (20.32 x 36.58)	0.500 (12.70)	N/A	1.050 (26.67)	1.637 (41.58)	1	TTRR-A2.36Z
TTL228-327-3	95	4/0	14-16	1.000 x 2.250 (25.40 x 57.15)	0.750 (19.05)	N/A	1.250 (31.75)	2.450 (62.23)	1	TTRR-A3.15Z
TTL230-327-3	120	4/0	14-16	1.000 x 2.625 (25.40 x 66.68)	1.000 (25.40)	N/A	1.250 (31.75)	2.825 (71.76)	1	TTRR-A3.54Z
TTL231-327-3	240	N/A	18-25	1.000 x 3.750 (25.40 x 95.25)	1.000 (25.40)	N/A	1.250 (31.75)	3.950 (100.33)	1	TTRR-A4.33Z
TTL237-327-1.5	185	N/A	16-20	1.900 x 3.188 (48.26 x 80.96)	0.750 (19.05)	N/A	2.150 (54.61)	3.388 (86.04)	1	TTRR-A4.33Z
TTL240-327-3	70	4/0	14-15	0.500 x 2.200 (12.70 x 55.88)	0.750 (19.05)	N/A	0.750 (19.05)	2.400 (60.96)	1	TTRR-A3.15Z

* IEC 60228

IMS™ SERIES HEAT SHRINK SLEEVES



ULTIMATE DURABILITY FOR EXTREME WIRING APPLICATIONS

IDENTCO® heat shrink polyolefin wire markers are the identification choice for the most demanding applications. When used with the recommended TTRR™-D thermal transfer resin ribbon, the printed legend is permanently locked in upon heat shrinking of the sleeve. IMS™ Series markers are impervious to harsh chemicals and high temperatures, provide excellent legend permanence when exposed to fuels, oils, and other fluids found in military and aerospace applications, and are flame-retardant.

IDENTCO offers heat shrink markers in all of the industry's common styles, sizes, and shrink ratios. The chart below represents our most popular sleeves. Please contact your IDENTCO representative for availability of sizes and styles not shown here.

SPECIFICATIONS

- Irradiated heat-shrinkable polyolefin
- Flame retardant UL224 VW-1
- 2:1 shrink ratio
- Thermal transfer printable
- Meets:
 - SAE-AMS-DTL-23053/5 Class 1&3
 - SAE-AS 81531 / 5942
 - MIL-STD-202F method 215J
- Resistant to:
 - Skydrol LD-4
 - Jet fuel
 - IPA 70%
 - Methyl propyl ketone
 - Gasoline



Part number	Diameter in (mm)	Web width inch (mm)	Recommended Ribbon
IMS-2.0-.094SM-2.5W	0.094 (2.4)	3.50 (88.90)	TTRR-D4.33Z
IMS-2.0-.125SM-2.0W	0.125 (3.2)	3.50 (88.90)	TTRR-D4.33Z
IMS-2.0-.188SM-1.5W	0.188 (4.8)	3.50 (88.90)	TTRR-D4.33Z
IMS-2.0-.250SM-1.5W	0.250 (6.4)	3.50 (88.90)	TTRR-D4.33Z
IMS-2.0-.375SM-1.0W	0.375 (9.5)	3.50 (88.90)	TTRR-D4.33Z
IMS-2.0-.500SM-0.5W	0.500 (12.7)	3.50 (88.90)	TTRR-D4.33Z
IMS-2.0-.750SM-0.5W	0.750 (19.1)	3.50 (88.90)	TTRR-D4.33Z

Shrink Sleeve Wire Size Chart

Diameters and lay-flat widths shown at actual size. Simply place your wire on the chart to select your shrink sleeve size.

Expanded Sleeve (as Supplied)	Recovered Sleeve (after shrinking)	Lay-flat Size	
IMS-2.0-.094SM-2.5W ● 0.094" (2.4mm)	● 0.047" (1.19mm)	0.210" (5.3mm)	2.0" (50.8mm)
IMS-2.0-.125SM-2.0W ● 0.125" (3.2mm)	● 0.063" (1.60mm)	0.255" (6.5mm)	2.0" (50.8mm)
IMS-2.0-.188SM-1.5W ● 0.188" (4.8mm)	● 0.094" (2.38mm)	0.375" (9.5mm)	2.0" (50.8mm)
IMS-2.0-.250SM-1.5W ● 0.250" (6.4mm)	● 0.125" (3.17mm)	0.468" (11.9mm)	2.0" (50.8mm)
IMS-2.0-.375SM-1.0W ● 0.375" (9.5mm)	● 0.188" (4.77mm)	0.688" (17.5mm)	2.0" (50.8mm)
IMS-2.0-.500SM-0.5W ● 0.500" (12.7mm)	● 0.250" (6.35mm)	0.875" (22.2mm)	2.0" (50.8mm)
IMS-2.0-.750SM-0.5W ● 0.750" (19.1mm)	● 0.375" (9.525mm)	1.250" (31.8mm)	2.0" (50.8mm)

ELP™-I and ELP™-D Series Printers



HIGHLIGHTS

- Industrial-grade printers for wire harness and panel building environments
- Best for self-laminating wire marker labels and heat shrink sleeves
- Quick integration with existing production lines and label printing systems
- Accommodates a broad array of labels, sleeves, and ribbons
- 300 dpi resolution ideal for most wire marking applications
- 600 dpi resolution for linear and 2d barcodes and micro text

FEATURES

- Stand-alone printing mode
- USB, ethernet, wireless and serial connectivity
- ZPL emulation
- 2 year warranty
- Extended warranty available
- 300/600 dpi printhead conversion capability (ELP-I)
- Tear-off and peel-off presentation modes



ELP™-I Series

Rugged and reliable industrial benchtop printer for printing wire markers, shrink sleeves, and other high-performance film labels. 300 dpi and 600 dpi versions available for ultimate flexibility in a wide variety of applications.

ELP™-D Series

Smaller form factor desktop printer ideal for printing labels and sleeves right at the harness wiring board or control panel. Size, ease of use, and affordability allow multiple printers to be economically deployed at each work station.

* See page 22 for detailed printer specifications *

PAPER LABEL SERIES

IDENTCO®'s packaging and shipping labels are made of thermal transfer printable paper and available in 22 sizes and configurations. We recommend the TTR™ Series wax ribbons for use with paper labels.



Ribbons for packaging labels

Part Number	Width x Height inch (mm)	Recommended Ribbon
TTL1P-1	1.50 x 1.00 (38.10 x 25.40)	TTR-2.36ZJ
TTL1P-2	1.50 x 1.00 (38.10 x 25.40)	TTR-3.26ZJ
TTL2P-1	2.00 x 1.00 (50.80 x 25.40)	TTR-2.36ZJ
TTL2P-2	2.00 x 1.00 (50.80 x 25.40)	TTR-4.33ZJ
TTL3P	3.50 x 1.00 (88.90 x 25.40)	TTR-4.33ZJ
TTL4	3.00 x 2.00 (76.20 x 50.80)	TTR-3.26ZJ
TTL4P	3.00 x 2.00 (76.20 x 50.80)	TTR-3.26ZJ
TTL5	4.00 x 2.00 (101.60 x 50.80)	TTR-4.33ZJ
TTL5P	4.00 x 2.00 (101.60 x 50.80)	TTR-4.33ZJ
TTL7P	4.00 x 2.50 (101.60 x 63.50)	TTR-4.33ZJ
TTL8	4.00 x 3.00 (101.60 x 76.20)	TTR-4.33ZJ

Part Number	Width x Height inch (mm)	Recommended Ribbon
TTL8P	4.00 x 3.00 (101.60 x 76.20)	TTR-4.33ZJ
TTL9P	4.00 x 4.00 (101.60 x 101.60)	TTR-4.33ZJ
TTL10	3.00 x 5.00 (76.20 x 127.00)	TTR-3.26ZJ
TTL10P	3.00 x 5.00 (76.20 x 127.00)	TTR-3.26ZJ
TTL11	4.00 x 6.00 (101.60 x 152.40)	TTR-4.33ZJ
TTL11P	4.00 x 6.00 (101.60 x 152.40)	TTR-4.33ZJ
TTL11F	4.00 x 6.00 (101.60 x 152.40)	TTR-4.33ZJ
TTL12P	4.00 x 6.50 (101.60 x 165.10)	TTR-4.33ZJ
TTL13	3.00 x 1.00 (76.20 x 25.40)	TTR-3.26ZJ
TTL13P	3.00 x 1.00 (76.20 x 25.40)	TTR-3.26ZJ
TTL14P	4.00 x 1.00 (101.60 x 25.40)	TTR-4.33ZJ

Part Number	Width inch (mm)	Length ft (m)
TTR-1.57ZJ	1.57 in (39.90 mm)	1,476 ft (450 m)
TTR-2.36ZJ	2.36 in (59.90 mm)	1,476 ft (450 m)
TTR-3.15Z	3.15 in (80.00 mm)	984 ft (300 m)
TTR-3.26ZJ	3.26 in (82.80 mm)	1,476 ft (450 m)
TTR-3.54ZJ	3.54 in (89.90 mm)	1,476 ft (450 m)
TTR-3.75Z	3.75 in (95.30 mm)	984 ft (300 m)
TTR-4.33Z	4.33 in (110.00 mm)	984 ft (300 m)
TTR-4.33ZJ	4.33 in (110.00 mm)	1,476 ft (450 m)
TTR-5.12ZJ	5.12 in (130.00 mm)	1,476 ft (450 m)
TTR-6.0ZJ	6.00 in (152.00 mm)	1,476 ft (450 m)
TTR-6.5Z	6.50 in (165.00 mm)	984 ft (300 m)

ELD™-200 SERIES LABEL DISPENSERS



The ELD™-200 electronic label dispensers are accurate, reliable, and cost-effective productivity tools. Each automatically separates the label or die-cut solder mask from the liner and presents it for application. An adjustable sensor detects the presence of the media and queues up the next label immediately upon removal. Dispensing can also be triggered manually on the front control panel.

Features and Benefits

- LED operation panel with label counter up to 9,999
- Selectable slow/fast feed supply rate
- Low-maintenance durable metal construction
- Peripheral connection for peel-off via external signal
- High-torque motor to easily handle up to 8.0 in. (203.20 mm) diameter rolls of media

Part number	ELD-200	ELD-201
Dispense plate width	4.72 in. (120 mm)	2.55 in. (65 mm)
Min / Max width	0.78 - 4.72 in. (20-120mm)	0.31 - 2.55 in (8 -65mm)
Min / Max height	0.31 - 4.33 in. (8-110mm)	0.197 - 4.33 in. (8-110mm)

PART NUMBER INDEX

TTL316-700-1	35	TTRR-V1.57Z	21
TTL316-730-1	35	TTRR-V1.57ZJ	21
TTL316-741-1	35	TTRR-V2.36Z	21
TTL316-748-1	35	TTRR-V2.36ZJ	21
TTL317-600-1	35	TTRR-V2.56ZM	21
TTL317-602-1	35	TTRR-V3.27ZJ	21
TTL317-700-1	35	TTRR-V3.54Z	21
TTL317-730-1	35	TTRR-V4.33Z	21
TTL317-741-1	35		
TTL317-748-1	35		
TTR-1.57ZJ	43		
TTR-2.36ZJ	43		
TTR-3.15Z	43		
TTR-3.26ZJ	43		
TTR-3.54ZJ	43		
TTR-3.75Z	43		
TTR-4.33Z	43		
TTR-4.33ZJ	43		
TTR-5.12ZJ	43		
TTR-6.0ZJ	43		
TTR-6.5Z	43		
TTRR-A2.36Z	21		
TTRR-A2.36ZJ	21		
TTRR-A2.52ZM	21		
TTRR-A3.15Z	21		
TTRR-A3.26Z	21		
TTRR-A3.26ZJ	21		
TTRR-A3.54Z	21		
TTRR-A3.54ZJ	21		
TTRR-A4.33Z	21		
TTRR-A4.33ZJ	21		
TTRR-A4.33ZM	21		
TTRR-AK1.0Z	21		
TTRR-AK1.57Z	21		
TTRR-AK2.0Z	21		
TTRR-AK2.36Z	21		
TTRR-AK3.0Z	21		
TTRR-AK3.15Z	21		
TTRR-AK3.54Z	21		
TTRR-AK4.33Z	21		
TTRR-B1.0Z	21, 28		
TTRR-B1.0ZJ	21, 28		
TTRR-B1.57Z	21, 28		
TTRR-B1.57ZJ	21, 28		
TTRR-B2.36ZJ	21		
TTRR-B2.52ZJ	21		
TTRR-B2.52ZM	21		
TTRR-B3.15ZJ	21		
TTRR-B3.27ZJ	21		
TTRR-B3.54ZJ	21		
TTRR-B4.33Z	21		
TTRR-B4.33ZJ	21		
TTRR-B4.33ZM	21		
TTRR-CR1.0Z	21, 28		
TTRR-CR1.0ZJ	21, 28		
TTRR-CR1.57Z	21, 28		
TTRR-CR1.57ZJ	21, 28		
TTRR-CR2.36Z	21		
TTRR-CR3.27Z	21		
TTRR-CR3.54Z	21		
TTRR-CR4.33Z	21		
TTRR-D1.0Z	21, 28		
TTRR-D1.0ZJ	21, 28		
TTRR-D1.57Z	21, 28		
TTRR-D1.57ZJ	21, 28		
TTRR-D2.36Z	21		
TTRR-D2.36ZJ	21		
TTRR-D3.27ZM	21		
TTRR-D3.27Z	21		
TTRR-D3.27ZJ	21		
TTRR-D3.54Z	21		
TTRR-D3.54ZJ	21		
TTRR-D4.33WHTZ	21		
TTRR-D4.33Z	21		
TTRR-D4.33ZJ	21		
TTRR-D4.33ZM	21		
TTRR-D5.12Z	21		
TTRR-D5.12ZJ	21		

HIGH-PERFORMANCE PRODUCTS. CONSISTENT QUALITY AND SERVICE. WORLDWIDE.

IDENTCO® is a global manufacturer with a singular mission: To solve the most demanding labeling challenges in the Electronics, Automotive, Transportation, Aerospace, Defense, Medical Device, Life Sciences, and adjacent industries with the highest quality products and service.

Our multi-location customers—global and domestic—demand consistency of product quality and service enterprise-wide, and IDENTCO delivers. Our locations in the US, Mexico, Germany, and Hong Kong all follow the same strict quality-control processes and systems to ensure excellence and consistency anywhere in the world.

Corporate Headquarters, USA



Monterrey, Mexico



Hanau, Germany



QUALITY MANAGEMENT SYSTEMS



AGENCY RECOGNITIONS



Visit us!



identco.com



**MEXICO
MONTERREY**

Carretera a Laredo KM 16.5
Bodega 14B Colonia Moisés Sáenz
Apodaca, Nuevo León CP 66613
Phone: +52 (81) 8008 - 0438

★ **UNITED STATES
HEADQUARTERS**

28164 W. Concrete Drive
Ingleside, IL 60041
Phone: +1 (815) 385 - 0011
Fax: +1 (815) 385 - 0359

● **EUROPE
GERMANY**

Güterbahnhofstraße 3-7
63450 Hanau
Phone: +49 (6181) 440 830 - 0
Fax: +49 (6181) 440 830 - 99

● **ASIA
PRC**

Unit 1208, 12/F, Grand City Plaza
No. 1-17 Sai Lau Kok Road
Tsuen Wan, New Territories, Hong Kong
Phone: +852 2959 2156 Fax: +852 2959 2019



Labels for Life.

identco.com

© 2020 IDENTCO
All Rights Reserved