

# Fabrif Buffing Wheels and Lamellar Wheels for your edgebander



Our **Premium Fabric-Buffing Wheels** are distinguished by a strong fabric quality. As a result, a spreading of the buffing wheels on the edge radius is avoided.

In connection with the special **RIEPE® Cleaning Agent LP163/93®**, the edge radius is polished so that its sheen matches that of the surface. The life of the buffing wheels is also considerably increased by the Cleaning Agent LP163/93®.

**Result:**

Material re-finishing · Reduction in stress whitening · Radius optic adapts to the workpiece surface (when using LP163/93®)



Our **Fabric-Sisal-Lamellar Wheels** are brushes with a cast mounting core. The lamellar are composed of the following ratio: 3 x fabric and 1 x sisal. The cloth in the lamellar serves to remove the previously applied **RIEPE® Cleaning Agent LP163/93®**.

The fabric-sisal-lamellar wheels are suitable for all types of thermoplastic edgings. In addition, they have, in combination with the special Cleaning Agent LP163/93®, a very long operating life. The use of the fabric-sisal-lamellar wheels while processing thin edges (<1mm) leads to the following:

**Result:**

Material re-finishing · Removal of the protruding edging material · Smoothing of the edge band (sharpness) · Reduction in stress whitening · Radius optic adapts to the workpiece surface

# Available Sizes



## Fabric-Buffing Wheels

Article No.	Outer diameter (mm)	Width (mm)	Boreholes (mm)
<a href="#">1832</a>	120	11	19 (hex)
1833	120	20	19 (hex)
1863	130	20	50
3147	145	15	44, 7
3694	150	10	19 (hex)
1843	150	19	50
1835	150	20	19 (hex)
1845	150	20	25
3204	150	25	25
1846	150	25	50
1847	150	27	11
3500	150	40	19 (rund)
1848	160	20	40
1850	160	25	20
1853	160	25	50
1855	160	25	55
1857	190	20	40
1858	190	20	50
3495	190	35	40
3265	200	25	50

Many sizes are immediately available from stock

# Available Sizes



## Fabric-Sisal-Lamellar Wheels

Article No.	Outer diameter (mm)	Width (mm)	Boreholes (mm)
1871	120	20	19 (hex)
3760	120	20	19 (hex) $\varnothing$ 20
3680	120	20	25
3116	140	20	19 (rund)
1875	140	25	50
3140	150	20	19 (hex)
3025	150	25	19 (hex)
3391	150	25	25
3352	150	27	11
1877	160	25	40
1878	160	25	50
1880	160	25	55
1881	190	20	40
1882	190	20	50
1885	190	25	50
3347	200	50	100

Many sizes are immediately available from stock

# Product Pictures

## Fabric-Buffering Wheels



Art:1832  
Schwabbelscheibe Tuch  
Fabric buffering wheel  
120x11x19 mm (hexagonal)



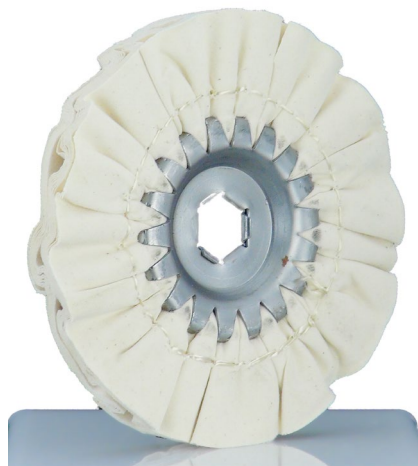
Art:1833  
Schwabbelscheibe Tuch  
Fabric buffering wheel  
120x20x19 mm (hexagonal)



Art:3694  
Schwabbelscheiben Tuch  
Fabric buffering wheel  
150x10x19 mm (hexagonal)



Art:1843  
Schwabbelscheibe Tuch  
Fabric buffering wheel  
150x19x50 mm



Art:1835  
Schwabbelscheibe Tuch  
Fabric buffering wheel  
150x20x19 mm (hexagonal)



Art:3204  
Schwabbelscheibe Tuch  
Fabric buffering wheel  
150x25x25 mm

# Product Pictures

## Fabric-Buffering Wheels



Art:1846  
Schwabbelscheibe Tuch  
Fabric buffering wheel  
150x25x50 mm



Art:1847  
Schwabbelscheibe Tuch  
Fabric buffering wheel  
150x27x11 mm



Art:1848  
Schwabbelscheibe Tuch  
Fabric buffering wheel  
160x20x40 mm



Art:1853  
Schwabbelscheibe Tuch  
Fabric buffering wheel  
160x25x50 mm



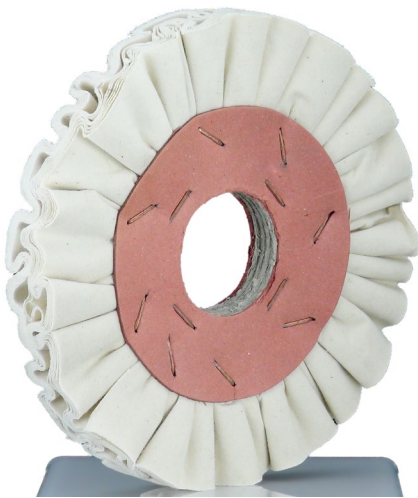
Art:1855  
Schwabbelscheibe Tuch  
Fabric buffering wheel  
160x25x55 mm



Art:1857  
Schwabbelscheibe Tuch  
Fabric buffering wheel  
190x20x40 mm

# Product Pictures

## Fabric-Buffering Wheels



## Fabric-Sisal-Lamellar Wheels



Art:1871  
Tuch-Sisal Lamellenrad 3:1 tlg.  
Fabric-Sisal-Lamellar wheel 3:1  
ratio  
120x20x19 mm (hexagonal



Art:3116  
Tuch-Sisal Lamellenrad  
Fabric-Sisal Lamellar wheel  
140x20x19mm runde Bohrung /  
round bore



Art:1875  
Tuch-Sisal Lamellenrad 3:1 tlg.  
Fabric-Sisal-Lamellar wheel 3:1  
ratio  
140x25x50 mm

# Product Pictures

## Fabric-Sisal-Lamellar Wheels



Art:3140  
Tuch-Sisal Lamellenrad 2:1 tlg.  
Fabric-Sisal-Lamellar wheel 2:1  
ratio  
150x20x19 mm (hexagonal)



Art:1877  
Tuch-Sisal Lamellenrad 3:1 tlg.  
Fabric-Sisal-Lamellar wheel 3:1  
ratio  
160x25x40 mm



Art:1878  
Tuch-Sisal Lamellenrad 3:1 tlg.  
Fabric-Sisal-Lamellar wheel 3:1  
ratio  
160x25x50 mm



Tuch-Sisal Lamellenrad 3:1 tlg.  
Fabric-Sisal-Lamellar wheel 3:1  
ratio  
160x25x55 mm



Art:3140  
Tuch-Sisal Lamellenrad 2:1 tlg.  
Fabric-Sisal-Lamellar wheel 2:1  
ratio  
150x20x19 mm (hexagonal)

Leading Machine manufacturers recommend and work with **Original-RIEPE®-Products!**