

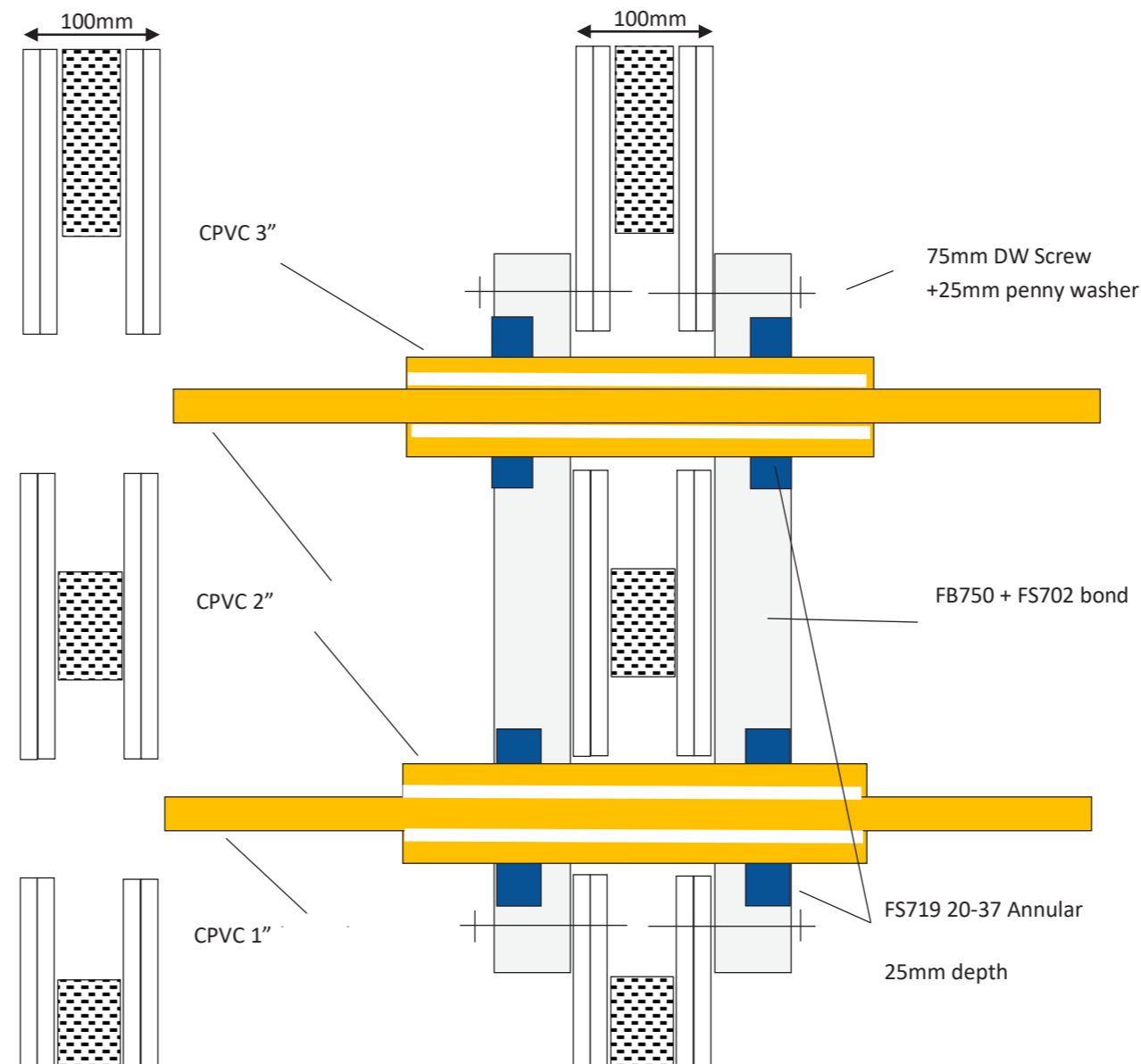
Installation Instructions:

1. Ensure within aperture is clean and free of debris and remove dust from surfaces requiring installation.
2. Follow Nullifire standard installation guidelines for pattress fit FB750 Intubatt details (PS001 / PS002 Detail C).
3. Where FB750 Intubatt meets CPVC pipework/ CPVC movement sleeve, ensure a minimum annular gap of 20mm to be cut to 25mm depth from the outside faces of the Batt.
4. Fill void around CPVC movement sleeve with FS719 HP Blue and trowel flush with the surface of the FB750 Intubatt on both faces (area can be masked off to prevent smearing on the batt face).
5. Detail between CPVC pipe and CPVC movement sleeve to be confirmed by pipe installer or pipe manufacturer.
6. Repeat the above to the opposite side of the wall.

Ensure no other sealant is in contact with the sensitive pipework throughout the installation.

Table 1

Pipe Diameter (mm)	Pipe Thickness (mm)	Sleeve Diameter (mm)	Sleeve Thickness (mm)	Void (mm)
60 (2" internal)	5.0	90 (3" internal)	8.0	130mm
33 (1" internal)	3.2	60 (2" internal)	5.0	100mm



**Additional Notes:**

Please refer to Nullifire Preapplication Guidance Note or if any further queries contact the Nullifire Technical Department. All surrounding substrates must perform to an equal or greater fire performance than the fire seal.

Test Information:

- Standard (Ref): BSEN 1366- 3 (WF/501462- Seal F1+F2)
- Products: FS719 HP BLUE  
FB750 INTUBATT  
FS702 INTUMASTIC
- Scenario: cPVC pipe through plasterboard wall
- Void Size: Varies, refer to Table 1
- Construction: Nominal 100mm flexible wall construct
- Penetrations: cPVC pipe and sleeve, see Table 1 for sizes
- Fire Resistance: Integrity (E) 120mins  
Insulation (I) 120 mins

Client and Job Title:

Drawing Title:

PATRESS INTUBATT  
CPVC PIPE IN SLEEVE FS719

Drawing Reference No:

PS-012

Additional Information:

- Scale: NTS
- Date: September 2021
- Sheet Size: A3
- Drawn By:
- Drawing No: 1021290921
- Rev: 1.0