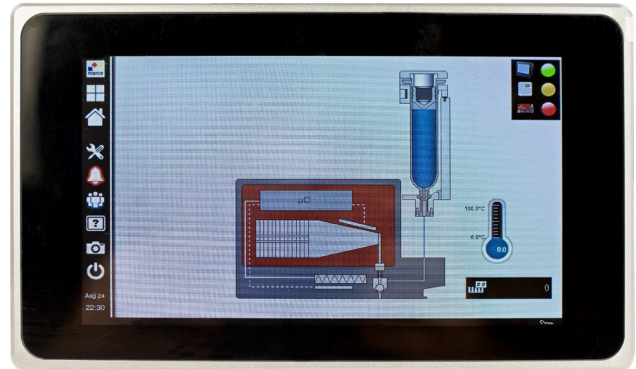


PZ-CON Piezo Electric Valve Controller

The PZ-CON piezo electric valve controller can be configured to independently control up to 4 PZ1200 valves. The pre-fitted driver module(s) uses an amplifier to generate the correct signal wave to actuate and control the piezo elements within the valve ensuring precise dispense control.

The built-in memory allows up to 10 individual programs to be created containing a pulse time and sequencing times & frequency. A built in USB connection also allows for programs to be remotely stored.

Each controller is supplied with three different user adjustable pulse definition profiles, which is critical when jetting fluid materials in order to minimise fluid build-up on valve seat and unwanted satellites on substrate.



Power supply & valve connecting cable (4.5m) included.

Item Number	Description
PZ-CON-1	Piezo Valve Controller - 1 Channel
PZ-CON-2	Piezo Valve Controller - 2 Channel
PZ-CON-3	Piezo Valve Controller - 3 Channel
PZ-CON-4	Piezo Valve Controller - 4 Channel

Features

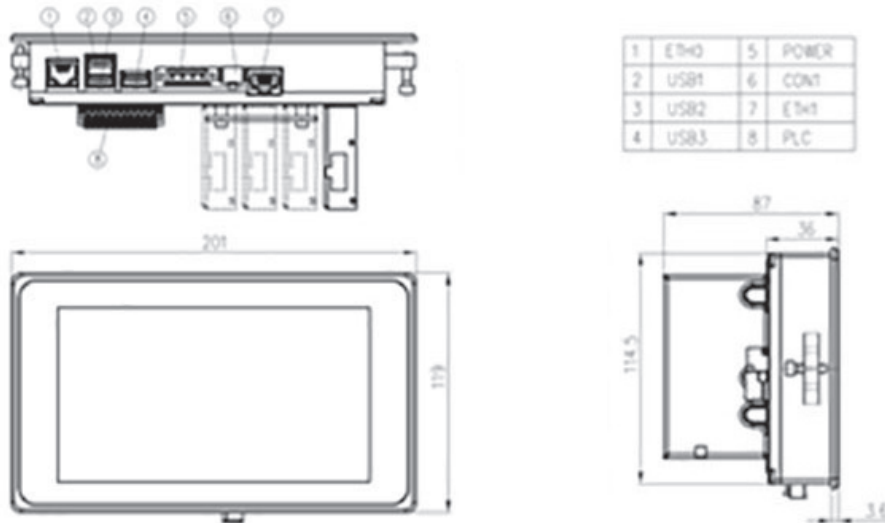
- Temperature control
- Operator lockout
- Valve purge screen
- 10 user programmable memories
- Trigger or continuous operation mode

Benefits

- User friendly, 7" touchscreen display
- User configurable I/O
- Control up to 4 valves
- Remote programme backup
- Programmable pulse definition profiles

PZ-CON Piezo Electric Valve Controller

PZ-CON-1/PZ-CON-2/PZ-CON-3/PZ-CON-4



Specifications

Item Number	PZ-CON-1	PZ-CON-2	PZ-CON-3	PZ-CON-4
Time Range		0.84 - 999ms		
Programs		10 memory slots		
I/O		3 inputs / 5 outputs		
Input AC to Power Supply		96 - 264 VAC, 47 - 63 Hz		
Output AC to Power Supply		24 V / 11.67 A		
Dimensions (WxDxH)		201 x 119 x 32.5 mm (8 x 4.7 x 1.3")		
Weight		800g (1.76 lb)		
Standards		CE Approved RoHS Compliant		

Contact Us

USA
info@fisnar.com
 1 (262) 253-8600

Europe
infoeurope@fisnar.com
 +44 (0) 1355 577222

Asia
info@fisnar.com.hk
 +852 2389-2827

India
info@fisnar.in
 +91-11-4556-6223-5