

# Fire Stopping Solutions

Product Catalogue



## Intelligent Engineered Passive Fire Protection

As a market leading manufacturer of both Fire Stopping and Structural Steel Protection solutions, Nullifire is at the forefront of smart passive fire protection. We are specialists, with one focus that has not and will not change- to protect people and buildings from fire.

With 50 years' experience in the construction industry, our offering includes a unique combination of Passive Fire Protection solutions and hands-on approach to delivering our services. These are the key differentiators that you will not see elsewhere.

You can have confidence in fire protection and rely on our systems to perform when they are called upon- Smart Protection.

A resilient and passionate team of technical experts will work hard and focus on trying to understand your needs and requirements, at every stage of your project.

Nullifire is a brand of CPG, Construction Products Group, a European manufacturer and service provider of high performance building materials.

3	Introduction
4	About Us
6	Traceability Tools- Optifire & Optifire+
8	Complete Smart Solutions

### Product Information

10	Wall & Floor Penetration Sealing
12	Pipe & Cable Penetration Closing
16	Specialist Sealants & Movement Gap Seals
18	Linear Movement & Specialist Building Gap Seals
20	Large Cavity Barriers

### About Tremco CPG UK

22	Certification and Testing
23	CPG UK and its trusted brands

## Assistance When Required

**Our targeted approach allows you to access answers to all of your questions - quickly, simply and for at any stage of the design, build and installation process.**

Regardless of the complexity of a project, you can turn to the team here at Nullifire. Our trained expert team support architects, specifiers, main contractors and installers in product selection, specification writing and industry best practices. Involving us at the early stages of a project can help you save money and time, as well as the assurance that the products selected are fully compatible and ideal for the job at hand.

Whilst choosing the right product is vitally important, the application is equally as critical. To optimise this process, we are able to supply the field teams data on formulations, installation specifications and technical drawings to ensure the correct application of our products. Bespoke manuals and instructions can be prepared by our technical teams for specific situations.

Our extensive online and face-to-face training ensures Nullifire products are applied professionally and efficiently, whilst giving installers and contractors access to new technologies and solutions.

All of our product data sheets, technical notes and additional product information can be downloaded from [www.nullifire.com](http://www.nullifire.com).

## Introduction

Our global reputation and 50 years in the industry place us as the best choice for single-source products, services and solutions!

Alongside our market leading Nullifire intumescent coatings for the protection of steel structures, fire stopping products provide outstanding passive fire protection solutions to service penetrations, movement joints and linear gaps along with unique interfacing solutions.

With dedicated customer service and sales team and a knowledgeable team of technical experts, everything is focused on providing what our customers need at every stage of their project – smart protection.

## Our Services

### Technical Hub

Our service offer underpins our product range, providing customers with a fast track response to technical queries at any stage of the design, build and installation process. Our technical support team is available to advise on product specification, application and installation.

Early input at every stage of the construction process can facilitate the seamless integration of passive fire protection solutions and prevent unnecessary disruption or delays to the build programme. This ensures accurate specification of products for every circumstance. Our extensive knowledge allows us to advise on current and likely future legislation related to fire protection in order to future-proof construction developments.



### Working with Contractors

We can work closely with contractors to optimise the installation process. Data on formulations, installation specifications and technical drawings can be supplied to field teams to ensure the correct application of our products. Bespoke manuals and instructions can be prepared by our technical teams for specific situations.

### On-site Support

We provide on-site support and classroom-based training to give installers working knowledge of passive fire protection solutions and instruction in the correct application and installation of our full range of products. Comprehensive searchable product information such as technical data sheets, safety data sheets and method statements are available on line.

### Training Hub

As experts in the field and with development centres at our fingertips, Nullifire UK offer monthly installers trainings and CPD Seminars to share and inform participants of new and upcoming technologies, methods, and procedures.

## Guaranteed Product Traceability

Pioneering technology brought to the market by Nullifire to provide building owners with lifelong traceability of products after construction phase.

These unique technologies offer a guaranteed source of quality and new levels of assurance, whilst acting as an incentive to ensure products are used and applied correctly.

- **Applicators** – Ability to ensure product installed on site is correct.
- **Main Contractors** – Ability to ensure that the whole contract chain is adhering to the same specifications.
- **Architects and Specifiers** – Ability to ensure that the specified quality products are installed without potentially inferior quality alternatives used.



Optifire is a unique UV technology, which is activated by exposing the product's surface to a UV light source, to offer easy and instant product identification.

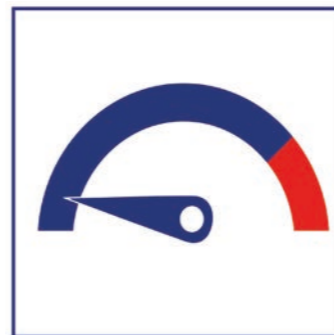
Optifire+ offers pigment technology, which is impossible to manipulate. Visible only with a specific Nullifire detector, it offers lifetime identification, remaining traceable even after a fire.



Insurance Premiums



Lifetime Traceability

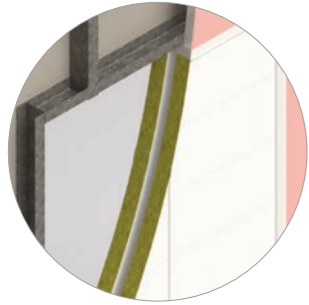


Reduced Risk

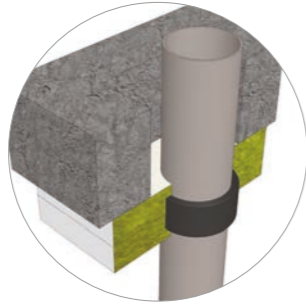


# Complete Smart Solutions

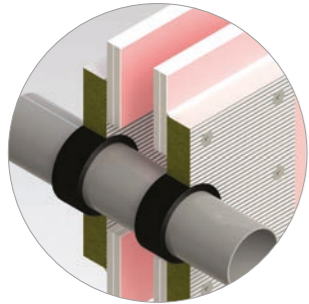
Nullifire manufactures a comprehensive range of fire stopping and fire resistant products that cover an extremely wide range of construction applications.



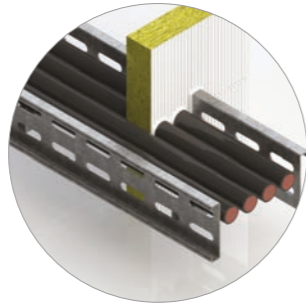
**Penetration Openings Through  
Compartment Walls (Flexible or Non-  
Flexible Construction)**



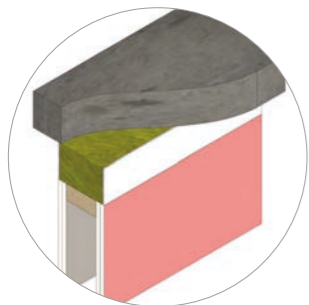
**Penetration Openings in Floors  
(Concrete, Timber or Membrane  
Construction)**



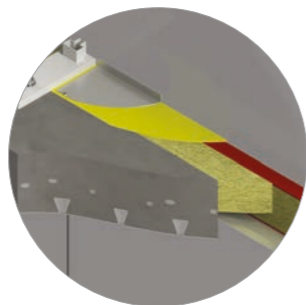
**Combustible Penetration Services**



**Non-Combustible Penetration  
Services and cable Management  
Systems**



**Linear Seals, Movement Heads and  
Deflection Details**



**Slab Edge Cladding and External  
Façade Solutions**



# Wall & Floor Penetration Sealing



## FB750 Intubatt



Rock mineral fibre board with an ablative elastomeric coating

### Description

FB750 Intubatt is a lightweight 4 hour fire barrier comprising of a rock mineral fibre board with a uniquely identifiable ablative coating, containing Optifire™ technology. Designed to reinstate the fire performance of compartment walls and floors which have been breached by penetrating services, providing a fire, smoke, thermal, acoustic and air pressure seal. FB750 must be used in conjunction with FS702 Intumastic to be suitable for sealing around the following service types: non-combustible pipes, cable trays, ladders and baskets (perforated or non-perforated), combustible pipes with suitable closing device, armoured cables, data cables, HV cables and cable bundles up to 100 mm.

### Features & Benefits

- Up to 4 hours fire resistance- tested to EN 1366-3
- Optifire™ unique traceability identifier
- Acoustic sealing & smoke sealing
- Air pressure tested up to 2000 Pa

### Specification

1200 x 600 x 50 mm  
Tolerances: ±2.5%  
Core Weight: 140 kg/m<sup>3</sup>  
Supplied individually in marked bags (180 kg option available)



ETA 21/0412



Cert. No. UL-EU-01058-CPR



## FS702 Intumastic Fire Resistant Acrylic



A water based acrylic sealant which cures to give a firm but flexible fire seal. Used to repair damage or bond to FB750 Intubatt

### Description

FS702 Intumastic is suitable for use in various construction joints offering up to 30% movement capability whilst providing an excellent acoustic and air seal. It is suited for use around non-combustible services, cables, rock fibre insulated non-combustible pipes, using a minimum depth of 25 mm. FS702 has excellent adhesive qualities and can be used for bonding and pointing of joints and service penetrations in conjunction with FB750 Intubatt systems.

### Features & Benefits

- Up to 4 hours fire resistance- tested to EN1366-4, EN1366-3 and BS 476 Pt 20-22
- Suitable for flexible walls and rigid walls & floors.
- Acoustics up to 55dB and air seal up to 2,000 Pa
- Optifire™ unique traceability identifier

### Specification

Gun Grade: 310 ml cartridges (12 per box/25 per box)  
600 ml sausages (12 per box)  
Trowel Grade: 5 Litre Bucket  
Colour: white (grey available on request) Can be over-painted.



ETA 21/0010



Cert. No. UL-EU-01059-CPR



## FR230 Intucompound Fire Mortar



Gypsum based mortar used to reinstate the fire resistance performance of floor constructions where the compartment line has been breached by service penetrations

### Descriptions

FR230 provides a safe working platform for loads upto 2.5 kg/m<sup>2</sup> when installed in full accordance to our recommendations. It is used to stop the spread of fire and smoke around services that pass through compartment walls and floors, whilst providing an unsupported load bearing capacity (see Specification Information). The system also provides thermal, acoustic and air sealing performance. FR230 is suitable for the following service penetrations; single and bunched cables, cable trays, cable ladders, trunking\*\*, non-combustible pipes, ducting/damper penetrations\* and combustible pipes\*\*.

### Features & Benefits

- Provides an effective barrier to the spread of smoke and fire
- Fire resistance up to 240 minutes
- Certified to EN 1366-3:2009
- Rapid setting, zero shrinkage formulation- can be used as pourable or trowel grade

### Specification

Supplied in 20 kg bags  
Mix Ratio: 2:1 powder to clean water (a stiffer mix may be required to aid application)  
Coverage: 3.5 bags per m<sup>2</sup> at 100 mm depth  
Maximum load capable unsupported opening: 1.21 m<sup>2</sup> at a depth of 100 mm

\* Damper manufacturer should be consulted prior to application

\*\*A suitable closer device will be required



ETA 20/1316



APPROVED PRODUCT  
CF5378





## FI025

### Intuflex Insulation Wrap

up to  
**240**  
mins

Designed to reinstate the fire insulation of services to the requirement of the compartment line in terms of EI

#### Description

FI025 Intuflex is a fire insulation upgrade material, primarily made from rock mineral fibre, with an outer layer of foil to provide a class O surface spread of flame around a class A1 core. It is designed to upgrade the insulation rating of uninsulated penetrated services (where required) which have been sealed using a Nullifire product. Tested around copper and steel pipes up to 160 mm diameter, cable trays, ladders and baskets, individual cables and cable bundles up to 100 mm diameter.

#### Features & Benefits

- Tested to EN 1366-3 with copper pipes, steel pipes, cable trays/ladders/baskets, individual cables and cable bundles
- Reinstates the insulation requirements of the compartment when applied around uninsulated service penetrations
- Easy and fast installation
- Does not de-rate electrical cables

#### Specification

25 x 200 x 10 mm  
Tolerances: ±2.5 mm  
Density: 45 kg/m<sup>3</sup>  
Supplied in individual boxes



## FS712

### Intucoat Brush

optifire up to  
**240**  
mins

A water based acrylic coating and adhesive

#### Description

FS712 may be used in conjunction with FB750 Intubatt, FB770 Intudeck and FJ220 Intubatt3 as a bonding agent, both to substrate and cut piece, and a surface repair coating.

#### Features & Benefits

- Up to 4 hours fire resistance - Tested to EN 1366-4, EN 1366-3 and BS 476 Pt 20-22 in conjunction with FB750 Intubatt, FB770 Intudeck or FJ220 Intubatt 3
- Acoustics up to 59 dB
- Air seal up to 2,000 Pa
- Provides a tested smoke seal
- Optifire™ unique traceability identifier

#### Specification

Supplied in 20 kg bags  
Mix Ratio: 2:1 powder to clean water (a stiffer mix may be required to aid application)  
Coverage: 3.5 bags per m<sup>2</sup> at 100 mm depth  
Maximum load capable unsupported opening: 1.21 m<sup>2</sup> at a depth of 100 mm



ETA 20/1316



APPROVED PRODUCT  
CF5378



## FP170

### Intucollar Intumescent Pipe Collar

up to  
**240**  
mins

Used to seal combustible pipes as they pass through fire compartment walls and floors

#### Description

FP170 Intucollar comprises of a stainless steel and a reactive intumescent lining. It expands when exposed to fire, reinstating the fire performance of compartment walls and floors which have been penetrated by combustible pipes. FP170 can be used on flexible walls & rigid walls (100 mm or wider) and rigid floors (150 mm or wider). FP170 may additionally be used around insulated combustible pipes or continuously insulated non-combustible pipes.

#### Features & Benefits

- Up to 4 hours fire resistance - Tested to BS EN 1366-3
- Suitable on flexible & rigid walls, rigid floors
- Easy to install
- Water resistant
- Stainless steel shell

#### Specification

Available Sizes: 40, 55, 65, 75, 82, 90, 100-110, 125, 140, 160, 200, 250, 315, 355 and 400 mm  
Colour: stainless steel



ETA 21/0183



## FP220

### Service Sleeve

up to  
**240**  
mins

A practical solution for fire sealing combustible pipes and ducting

#### Description

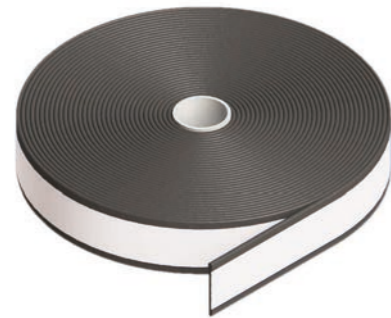
A pipe closer device, comprising of an intumescent material within a stainless steel shell that is positioned around combustible pipes to provide up to 4 hours fire protection. Designed specifically to provide a low cost solution for fire sealing combustible pipe penetrations as they pass through fire compartment walls and floors, whilst completely protecting the cavity within stud work walls. In a fire, the intumescent lining within the metal sleeve expands and crushes the heat softened plastic pipe leaving a potential path for fire completely sealed. Intusleeve is a perfect solution for angled pipes.

#### Features & Benefits

- Up to 2 hours fire resistance - Tested to EN 1366-3
- Ultra-slim body design ensures easy installation and reduces time on-site
- No fixings
- Unaffected by moisture
- Simple solution for angled pipes

#### Specification

Circular, diameters: 40, 55, 63, 82, 110, 125 & 160 mm  
Standard length: 220 mm  
Length may be increased to suit angled pipe requirements  
Rectangular sleeves also available  
Colour: stainless steel (silver)



## FP302

### Intustrap Intumescent Strap

up to  
240  
mins

A graphite impregnated intumescent product with high flexibility

#### Description

FP302 is designed to close off combustible elements whilst maintaining compartmentation. It is also a component product incorporated within many Nullfire fire stopping products. This product is most commonly used around combustible pipes with a diameter of between 10 mm and 160 mm and all types of pipe insulation up to 60 mm thick.

#### Features & Benefits

- Tested to BS EN 1366-3
- Unaffected by moisture
- Fully tested for up to 240 minutes integrity and insulation (dependent on application)
- Available in easy to handle rolls
- Simply link with duct tape

#### Specification

Packaged:  
60 mm x 4 mm x 25 m roll  
1 per box



ETA 20/1318



APPROVED PRODUCT  
CF5364



## FII40

### Shutter Slab

up to  
240  
mins

Used to seal combustible pipes as they pass through fire compartment walls and floors

#### Description

FP170 Intucollar comprises of a stainless steel and a reactive intumescent lining. It expands when exposed to fire, reinstating the fire performance of compartment walls and floors which have been penetrated by combustible pipes. FP170 can be used on flexible walls and rigid walls (100 mm or wider) and rigid floors (150 mm or wider). FP170 may additionally be used around insulated combustible pipes or continuously insulated non-combustible pipes.

#### Features & Benefits

- Up to 4 hours fire resistance - Tested to BS EN 1366-3
- Suitable on flexible & rigid walls, rigid floors
- Easy to install
- Water resistant
- Stainless steel shell

#### Specification

Available Sizes: 40, 55, 65, 75, 82, 90, 100-110, 125, 140, 160, 200, 250, 315, 355 and 400 mm  
Colour: stainless steel



ETA 21/0183



## FP333

### Trunking Infill

up to  
120  
mins

Provides a fire-tight barrier for trunking boxes where frequent changes to cabling may be required

#### Description

FP333 Trunking Infill is a fire resistant compressible foam strip layered with high expansion intumescent material produced in three sizes. It is designed to provide a permanent fire barrier within trunking boxes passing through fire compartment walls.

#### Features & Benefits

- Up to 2 hours fire performance - Tested to BS EN 1366-3
- Integrity, insulation and smoke seal
- Zero fibre migration
- Three standard sizes to allow for complicated service conditions

#### Available Sizes

29 x 47 x 333 mm ; 29 x 97 x 333 mm  
29 x 147 x 333 mm to suit 50 / 100 / 150 mm trunking box widths  
All available in individual units



## FJ203

### Rope

up to  
240  
mins

A practical solution for fire sealing combustible pipes and ducting

#### Description

FJ203 is a non-combustible fire resistant woven rope, made of rock mineral fibre, and sheathed with flexible glass wires to make an easy to handle expansion joints product. It is designed to reinstate the fire compartment requirement, where expansion joints have been formed within masonry / concrete elements, in walls and floors.

#### Features & Benefits

- Up to 4 hours fire resistance - Tested to EN 1366-4
- Up to 150 mm joint width
- Suitable for irregular joints
- Easy to apply, easy to cut
- EDF nuclear approval

#### Specification

Circular, diameters: 40, 55, 63, 82, 110, 125 & 160 mm  
Standard length: 220 mm  
Length may be increased to suit angled pipe requirements  
Rectangular sleeves also available  
Colour: stainless steel (silver)



# Specialist Sealants Linear & Movement Seals



## FS702

### Intumastic Fire Resistant Acrylic



A water based acrylic sealant which cures to give a firm but flexible fire seal. Used to repair damage or bond to FB750 Intubatt

#### Description

FS702 Intumastic is suitable for use in various construction joints offering up to 30% movement capability whilst providing an excellent acoustic and air seal. It is suited for use around non-combustible services, cables, rock fibre insulated non-combustible pipes, using a minimum depth of 25 mm. FS702 has excellent adhesive qualities and can be used for bonding and pointing of joints and service penetrations in conjunction with FB750 Intubatt systems.

#### Features & Benefits

- Up to 4 hours fire resistance- tested to EN1366-4, EN1366-3 and BS 476 Pt 20-22.
- Suitable for flexible walls and rigid walls & floors.
- Acoustics up to 55dB and air seal up to 2,000 Pa
- Optifire™ unique traceability identifier

#### Specification

Gun Grade: 310ml cartridges (12 per box/25 per box)  
600ml sausages (12 per box)  
Brush Grade: 5 Litre Can  
Trowel Grade: 5 Litre Bucket  
Colour: white (grey available on request) Can be over-painted.



ETA 20/1315



Cert. No. UL-EU-01059-CPR

## FS703

### Fire Resistant Silicone Sealant



Ideal for sealing movement joints where a fire rating is required

#### Description

FS703 is a low modulus, neutral cure, silicone sealant, suitable for linear gaps sealing in order to reinstate the fire performance in compartment walls and floors. Suitable for fire seal joints in compartment walls and floors, static linear joints (masonry to masonry/rigid wall/rigid floor/flexible wall) and window & door joints (masonry to timber/steel)

#### Features & Benefits

- Up to 4 hours fire resistance, tested to EN 1366-4
- Tested in gaps 10-220 mm
- Ideal for joints in flexible walls, rigid walls & floor, windows & door frames
- Airtight up to 6000 Pa
- Superior elasticity
- Excellent tooling properties
- UV & weather resistance

#### Specification

Packaging:  
310 ml cartridges (12 per box)  
600 ml sausages (12 per box)  
Colours: white (grey & black available upon request)



ETA 20/1215



APPROVED PRODUCT  
CF5326



## FS709

### HP Intumescent Sealant



A high pressure exerting, graphite intumescent mastic which when exposed to fire expands

#### Description

FS709 HP is designed to close off gaps and penetrations in compartment walls and floors, to provide up to 4 hours fire resistance. It can be used on flexible walls & rigid walls (100 mm or wider), rigid floors (150 mm or wider), and also with FB750 Intubatt Coated Batt. This product has been formulated to close off combustible pipe penetrations in the event of a fire, negating the need for pipe closers or wrap systems. FS709 has been tested in a variety of service penetrations.

#### Features & Benefits

- Up to 4 hours fire resistance- tested to EN 1366-3 and EN 13-66-4
- Versatile and easy to apply
- Tested with combustible pipes up to 125 mm, insulated non-combustible pipes up to 160 mm, cables, cable trays/ladders/baskets (up to 500 mm), cable bundles (up to 100 mm)
- Can be used in FB750 Intubatt
- Tested in openings up to 600x600 mm
- Tested for use in linear gaps up to 25 mm

#### Specification

Packaging: 310 ml cartridges (12 per box/25 per box)  
600 ml sausages (12 per box)  
Colour: anthracite



ETA 20/1314



Cert. No. UL-EU-01061-CPR

## FS719

### HP Blue for CPVC



A unique sealant, developed specifically for CPVC materials. A distinctive blue colour, for easy identification and traceability.

#### Description

FS719 is a powerful product, designed to close CPVC, only when the pipes are deteriorating under fire conditions. Approved for use by Lubrizol CPVC pipe manufacturer, and registered as such for use around Flowguard, Blazemaster, Corzan, etc. It is used to reinstate the compartment fire performance of compartment lines (walls & floors) which have been breached by CPVC combustible sprinkler systems.

#### Features & Benefits

- Up to 4 hours fire resistance- tested to EN 1366-3
- Versatile and easy to apply
- Can be used with FB750 Intubatt
- Tested in openings up to 365 x 700 mm

#### Specification

Packaging: 310 ml cartridges (25 per box)  
Colour: blue





## FB770

### Intudeck - Timber Floor Upgrade



**Ideal where ceilings cannot be disturbed or where lower floor occupancy does not allow fire upgrade**

#### Description

FB770 Intudeck is a rock mineral fibre board coated on one side with a smoke and fire resistant sealant. Light weight and quick to install, FB770 can be cut to suit on site and fitted using compression and FS702 Intumastic bonding between joists. Ideal where decorative ceilings cannot be disturbed or accessed due to lower floor occupancy. It may be used to upgrade the compartment capability to 90 minutes fire integrity and insulation (EI 90) whilst maintaining the load capability of the floor.

#### Features & Benefits

- Tested to BS EN1365-2 (loaded floors) and to BS 476 Pts 20-22 (non-loaded floors): up to EI 90
- Simple installation method
- Does not disturb ceilings or damage ornate coving
- 40 dB acoustic performance

#### Available Sizes

600 x 1200 x 70 mm  
Supplied individually in clearly identifiable packaging (or in pallet quantities)  
Double coated option available.



## FF197

### Fire Rated PU Construction Foam



**A moisture-curing foam that can provide up to 4 hours fire integrity to openings in masonry construction**

#### Description

FF197 is a modified, single component, fire rated polyurethane foam. It is used to seal door frames, window frames and linear gaps throughout the fire rated areas of a building.

#### Features & Benefits

- Tested to BS EN 1634-1 (fire door) : FD60 performance achieved
- Tested to BS EN 1366-4 (linear gaps): up to 4 hours fire resistance
- Cures to form a semi-rigid foam that is able to accommodate some degree of movement of the joint
- Acts as an effective fire seal for up to 4 hours (BS EN 1366-4) when used with Intumastic (FS702) intumescent acrylic or Intusil (FS703) silicone sealant and installed in full accordance to our tested solutions and recommendations.

#### Specification

Supplied in 750 ml aerosol containers (12 per box)  
Colour: grey



APPROVED PRODUCT  
CF5325



ETA 20/1338



## FI200

### Soffit Liner



**Cost effective solution for insulating concrete soffits**

#### Description

FI200 Soffit Liner is a specially formulated high density rock mineral fibre slab laminated to a 6 mm, impact resistant, cement particle board that provides an aesthetically pleasing liner to concrete soffits. A cost effective solution for insulating concrete soffits, providing both a robust & an aesthetic pleasing finish. It performs exceptionally well thermally and acoustically but, above all, provides a fire safe solution to building requirements.

#### Features & Benefits

- Tested to BS 476 Pt 6/7 Class 1 and BS 3533 insulation. The mineral fibre slab used meets Euroclass A1 to BS EN ISO 13501-1
- Tested to BS 476 Pt 22 for fire upgrade up to 120 minutes (protection of the lowest rebar within the floor slab, measured to not reach critical failure temperature)
- Durable and non-hygroscopic
- Easy to handle

#### Available Sizes

1200 x 600 mm slabs tolerance +/- 1.5 mm  
Available thicknesses: 136, 166, 191, 226 mm (thickness required is related to the U-value specified)



## FJ400

### Intuspan Intumescent Joint Filler



**Joint filler providing a high level of movement suitable for gaps up to 100mm**

#### Description

FJ400 Intuspan is an extremely compressible, foam based, joint filler. The product is black in colour, and consists of foam layers between high expansion intumescent layers. It provides a high level of physical movement, and can offer up to 2 hours integrity and insulation, with no adhesive required in most situations. It is used to reinstate the performance of fire compartment lines, both walls and floors, where construction joints require a physical movement seal and a specific fire rating.

#### Features & Benefits

- Up to 2 hours fire performance - Tested to BS EN 1366-4 and BS 476 Pt 22
- Ideal for high vibration areas, such as elevator shaft interfaces
- Easy to install by hand
- Suits vertical & horizontal joints, and head of walls.

#### Available Sizes

Available in a range of sizes - contact technical for more information  
All available in individual units  
Colour: black



APPROVED PRODUCT  
CF582



## FJ220 Intubatt 3 Cavity Barrier



A rock fibre compressible slab, with an ablative coating to provide a fire and smoke seal

### Description

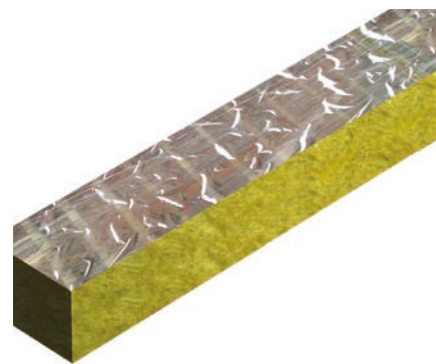
FJ220 is a rock fibre compressible slab, with an ablative coating to provide a fire and smoke seal. Available in 2 options: single coated for horizontal seals and double coated for vertical seals, FJ220 is supplied pre-configured, ablative coated and factory cured.

### Features & Benefits

- Up to 2 hours fire resistance-Tested to both BS 476 20-22 and BS EN 1366-4
- Cost effective solution
- Easy to install and inspect
- 52 dB acoustic performance
- Optifire™ unique traceability identifier

### Available Sizes

1200 x 600 x 100 mm ±3 mm  
Colour: off-white (coating)



## FJ240 Spanatherm



Provides a fire-tight barrier for trunking boxes where frequent changes to cabling may be required

### Description

FJ240 Spanatherm is a strong pre-engineered rock fibre movement-joint fire seal, vertical fibre orientation, that allows significant movement accommodation at the same time as providing fire integrity, insulation and an effective smoke seal. A dense rock mineral fibre board Class A1 core with a BC0 aluminium foil applied to two faces. This provides a vapour barrier and a smoke seal when correctly sealed.

### Features & Benefits

- Up to 2 hours integrity and 90 minutes insulation - Tested to BS 746 20-22
- Dry fit system
- Easy to install and can be installed prior to the application of the cladding system
- Vapour, smoke and acoustic seal

### Available Sizes

1200 x 600 x 100mm thick slabs.  
Supplied individually (or in pallet quantities)



## FV060 Ventilated Facade Cavity Closer



For use within rainscreen cladding systems to maintain compartment lines to the exterior of the building envelope

### Description

FV060 is a graphite impregnated rubber-based product, encapsulated within a polythene carrier. Both the encasement and the inner product are waterproof and UV resistant. The product remains dormant unless exposed to a fire situation. FV060 is capable of closing a ventilated cavity air gap of varying sizes within its specified capabilities. It is lightweight and requires no maintenance when installed to our instructions and recommendations.

### Features & Benefits

- Up to 60 minutes fire resistance- Tested to BS EN 1363-1, EOTA TR 31
- Ultra-slim design for continuous maximum air flow
- Weatherproof and UV resistant
- Lightweight and durable
- Can be installed prior to the cladding installation

### Available Sizes

Size: 1200 x 65 x 8mm (50mm cavity)  
- localised cavity reduction of 8mm  
Size: 1200 x 65 x 4mm (29mm cavity)  
- localised cavity reduction of 4mm  
Colour: red / white



## FV100 Ventilated Facade Large Cavity Closer



For use within rainscreen cladding systems to maintain compartment lines to the exterior of the building envelope

### Description

FV100 comprises of a rock mineral fibre carrier and a high pressure graphite manipulated intumescent composite. This is retained within a polymeric, branded (for product identification), water proof adhesive encapsulant. The product remains dormant unless exposed to fire. It should be used within rainscreen cladding systems to maintain compartment lines to the exterior of the building envelope.

### Features & Benefits

- Tested at Exova BMTada to BS EN 1366-4  
Maximum free air space 50mm
- Moisture proof covering, ensures easy installation in awkward situations

### Available Sizes

1200mm length x 60mm depth  
Suitable for 25mm or 50mm air gaps  
Colour: silver, blue, red

# Testing & Certification

At Nullifire, we are able to assist with a comprehensive selection of passive fire protection products, giving architects, specifiers, and contractors the ability to achieve fire protection requirements within any building structure.

Working closely with our in-house technical team, 3<sup>rd</sup> party accredited installers can deliver the best possible and most cost-effective fire protection solution, without compromising on quality or safety.

As the sole manufacturer to offer both intumescent coatings and fire stopping products, we are uniquely positioned to offer a full package to suit all project requirements. Nullifire's passive fire protection products, in combination with technical support and expert advice, gives all parties peace of mind and assurance of local building code compliance.

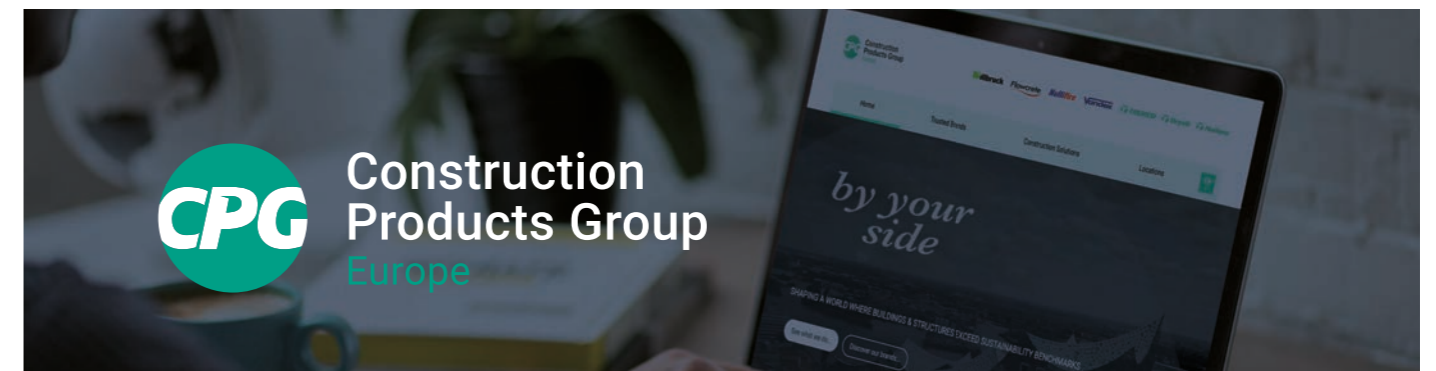
Our passive fire protection products undergo initial validation assessments at our in-house facilities prior to undergoing rigorous independent 3<sup>rd</sup> party testing with leading UKAS test houses, resulting in the following accreditations:

- BS EN 1366-3
- BS EN 13501-2
- EAD 350454-00-1104
- CE Marking
- UL-EU Certification

Nullifire, as part of CPG is an active participant in BSI standards, CEN working groups and the ASFP.



Tremco CPG UK Limited products are manufactured to rigid standards of quality. Any product which has been applied (a) in accordance with Tremco CPG UK Limited written instructions and (b) in any application recommended by Tremco CPG UK Limited, but which is proved to be defective, will be replaced free of charge. No liability can be accepted for the information provided in this leaflet although it is published in good faith and believed to be correct. Tremco CPG UK Limited reserves the right to alter product specifications without prior notice, in line with Company policy of continuous development and improvement.



CPG Europe manufactures high performance building materials in order to solve the complex challenges faced by today's construction industry. With over 1,400 employees across Europe, we are committed to being by your side to shape a world where buildings and structures save energy, last longer and exceed sustainability benchmarks.

## Delivering World-Class Construction Product Solutions.

The product brands housed within CPG Europe cover a wide array of different construction needs and provide a wealth of complex services, support and systems that are rarely found together under one roof.



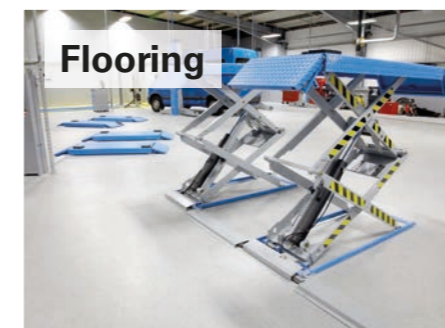
### Sealing, bonding & insulation

Window Insulation, Façade Construction, Exterior Insulation & EIFS, Structural & Inplant Glazing, Insulated Concrete Forms (ICFs)



### Passive fire protection

Intumescent Coatings, Fire Stopping



### Flooring

Seamless Resin Flooring, Subfloor Preparation, Car Parking Structures



### Waterproofing

Potable & Waste Water Industry, Balconies, Terraces, Basements & Foundations



### Roofing

Liquid Applied Systems, Felt Systems, Vegetated Roofing

Europe's leading construction products brands...





Tremco CPG UK Limited  
Coupland Road  
Hindley Green  
WN2 4HT, UK

+44 (0) 1942 251400  
hello@cpg-europe.com  
www.cpg-europe.com



[www.nullifire.com](http://www.nullifire.com)



[firesales@cpg-europe.com](mailto:firesales@cpg-europe.com)



[@Nullifire](https://www.facebook.com/Nullifire)



[/company/Nullifire](https://www.linkedin.com/company/Nullifire)